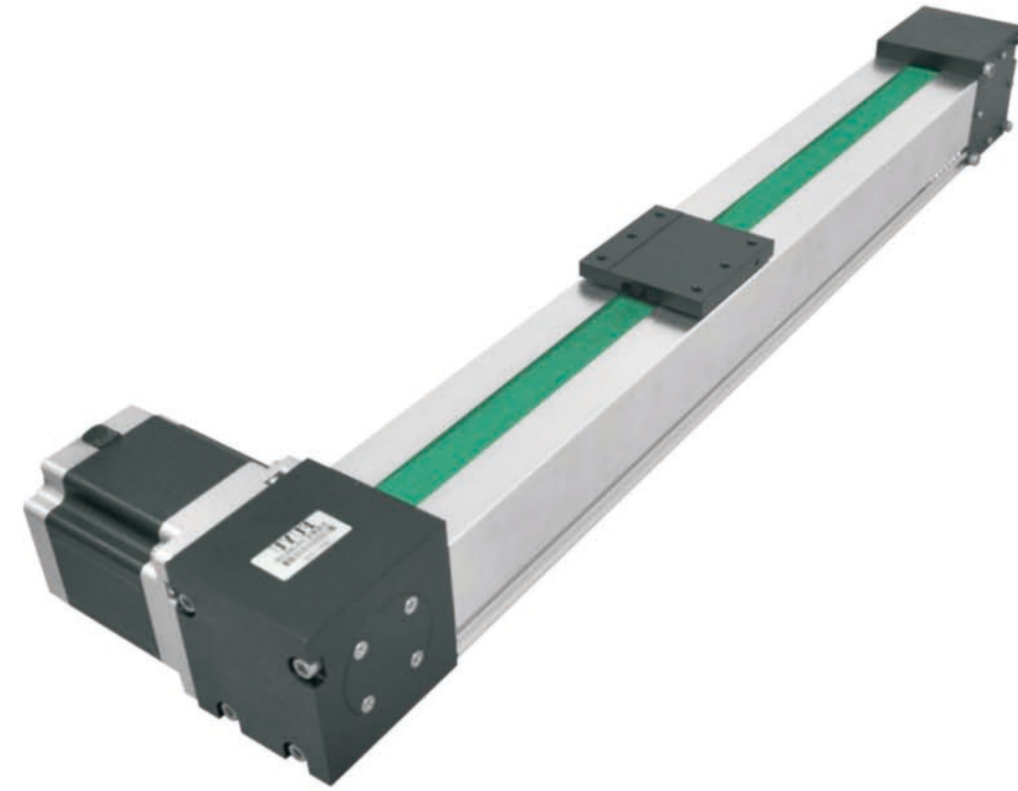


# 80 直线皮带模组 80mm Belt Linear Guide

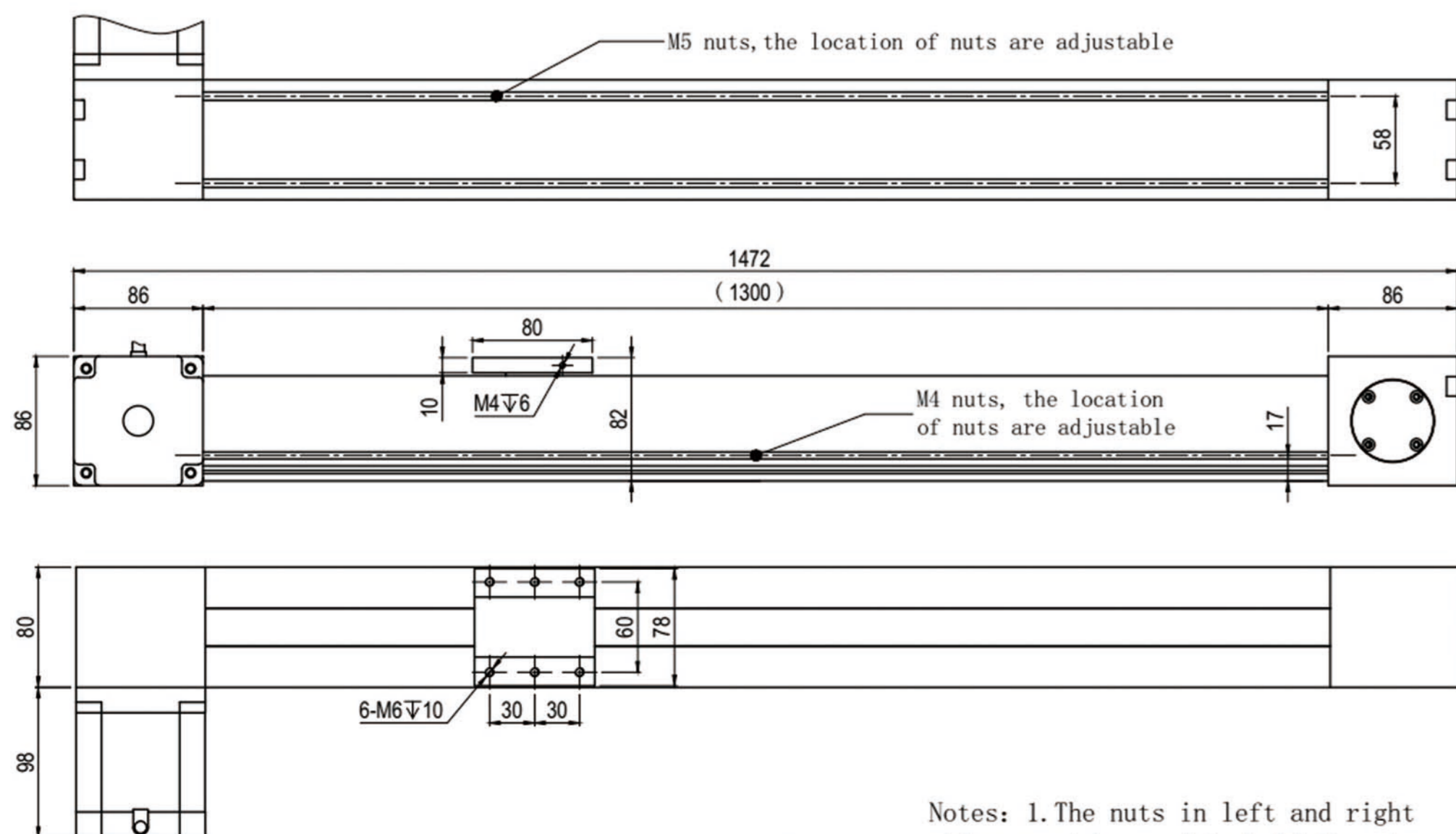


## 产品型号说明 Model Description

### B - W80 - L1200 - 10 - S2 - C7

- S: 丝杆式模组  
Screw Driven Module
- W80: 滑台宽度: 60mm  
Slide width: 60mm
- L1200: 有效行程: 1200mm  
Stroke: 1200mm  
(依客户要求定制)  
Customized
- 10: 丝杆导程: 10mm  
Screw Lead: 10mm
- S2: 限位开关  
Limit Switch  
S1: 一个 One pcs  
S2: 两个 Two pcs  
无标记 No tag:  
没有限位 No Limit Switch
- C7: 丝杆精度等级  
Screw Accuracy

## 产品尺寸图 Dimension



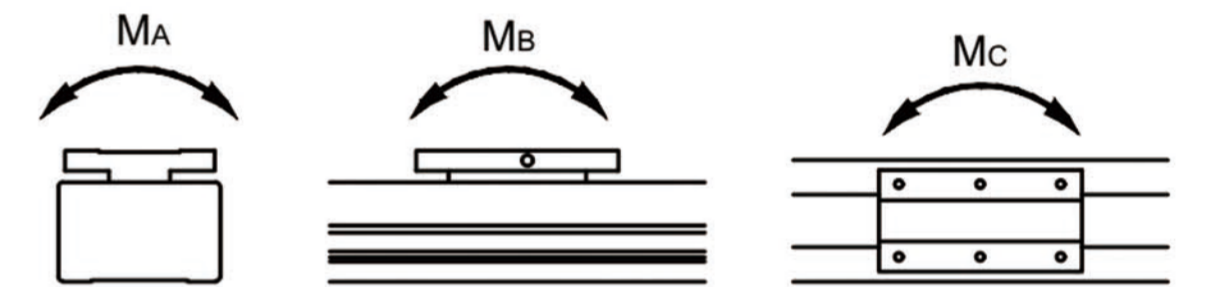
## 技术参数 Technical Parameters

80皮带模组 80mm Belt Linear Module	
电机额定力矩 Holding torque for motor ( N.m )	5
同步轮周长 Synchronous wheel circumference(mm)	165
定位精度 Position Accuracy[mm]	0.1
水平最大负载 Max Horizontal Load (kg)	30
垂直最大负载 Max Vertical Load (kg)	5
空载速度 No Load Speed ( mm/s )	3000
水平满载速度 Max Horizontal Speed ( mm/s )	1700
垂直满载速度 Max Vertical Speed ( mm/s )	800
推荐加速度 Rated Acceleration ( mm/s <sup>2</sup> )	3000
最大推力 Maximum Force (N)	65
动态容许力矩 Dynamic Permissible Torque (N.m)	M <sub>A</sub> =45 M <sub>B</sub> =35 M <sub>C</sub> =35

## 产品特点 Features

- ▶ 本体宽度80mm  
Width at 80mm
- ▶ 全封闭结构  
Fully enclosed structure
- ▶ 稳定性强  
High stability
- ▶ 结构紧凑  
Compact structure
- ▶ 高精度,刚性好  
High Precision,High rigidity structural design

## 力矩方向 Torque Direction



## 选配件 Accessories

电源、驱动器、限位开关、控制器、连接板、拖链

Power supply, Motor driver, Limit switch, Controller, Connection board, Drag Chain

## 产品应用 Application

应用范围:

使用自动化点胶、喷图、焊接、包装、搬运、喷绘、打印设备, 激光载床、光伏背板切割刻膜机、输送机手、延时摄影、辅助设备、电科研试验功能演示, 各类工业自动化生产线等。

Range of application: Suitable for automatic dispensing, spary drawing,welding,packaging,handing,printing,printing equipment,laser carrier,photovoltaic back sheet cutting and cutting machine,conveying robot, time-lapse photography,auxiliary equipment, and electric scientific research test function demonstration, various types of industrial automation production lines.