

SWH30L50T<sub>xx</sub>-35-10BR

版本 (Versions)	修改内容 (Description)	标记 (REV)	日期 (Date)
------------------	--------------------	-------------	-----------

(Versions)

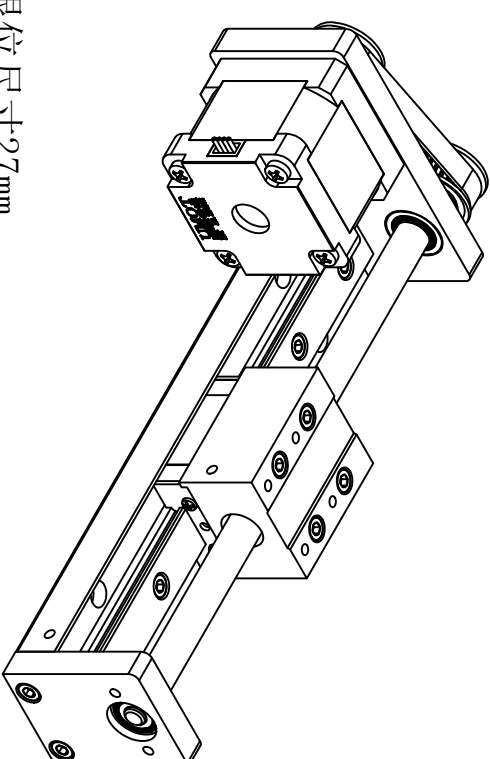
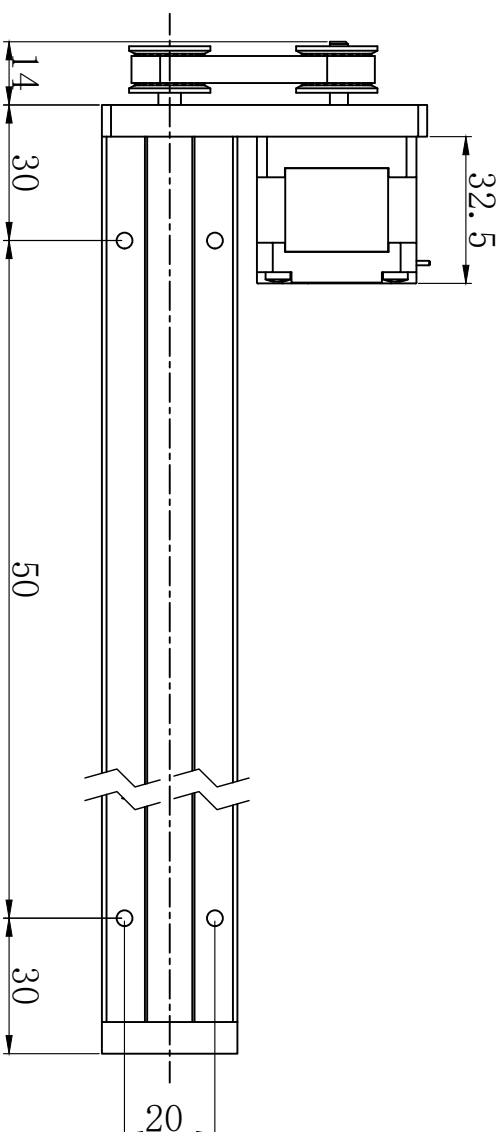
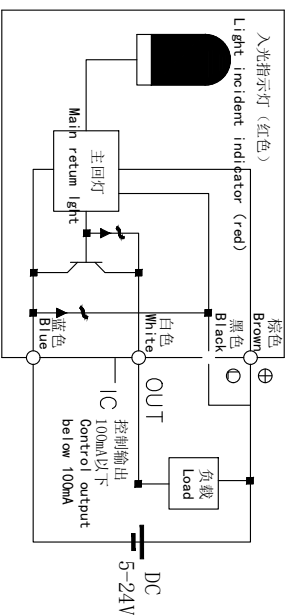
修改内容(Description)	标记 (REV)	日期 (Date)
-------------------	-------------	-----------

(REV)

日期 (Date)

图 1 感应器接线图

## Sensor wiring diagram



滑台机械限位尺寸28mm

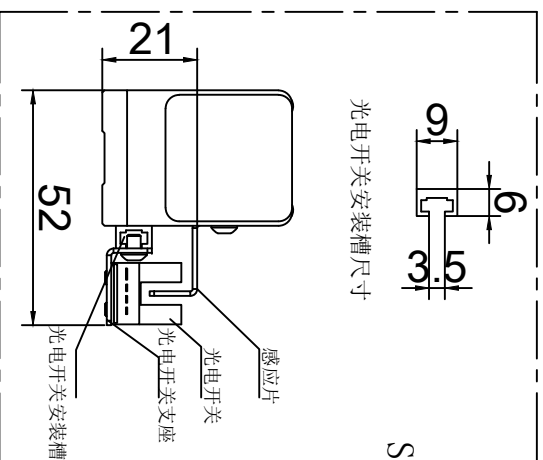
有效行程50

滑台机械限位尺寸27mm

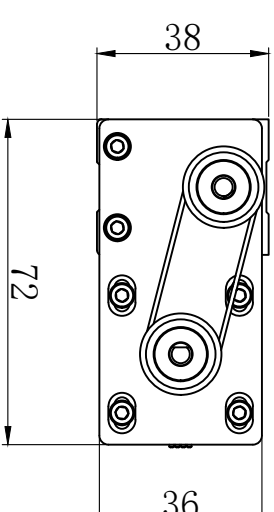
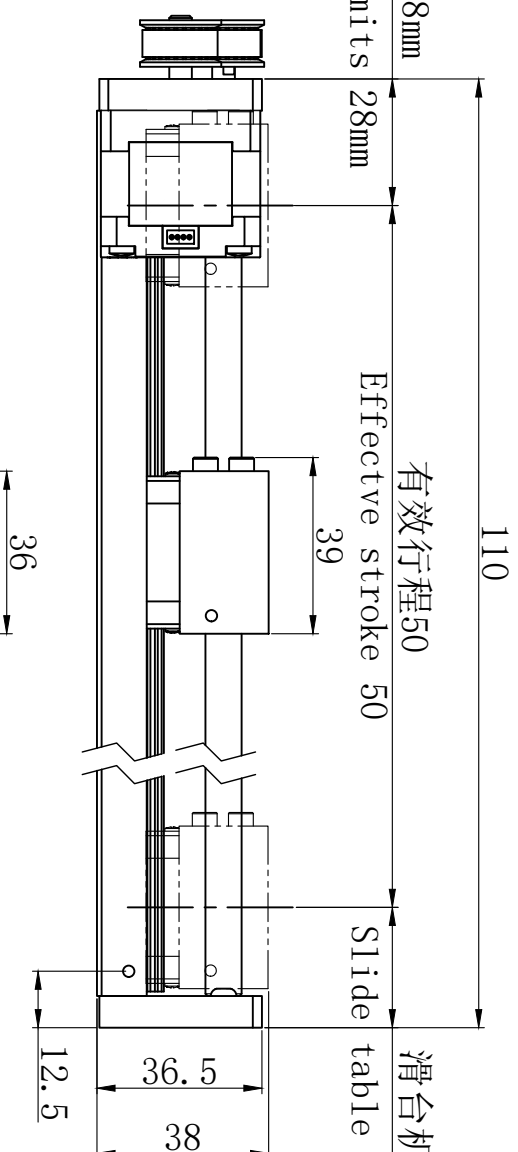
## Slide table mechanical limits

Effective stroke 50

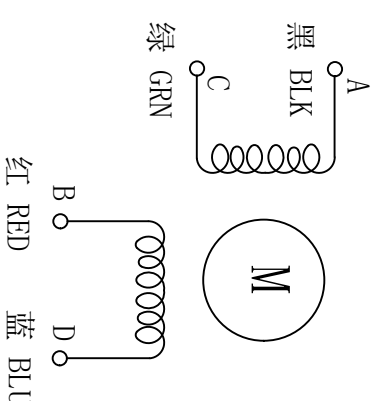
table mechanical limits 27mm



## 光电开关选配件



电气原理图  
winding drawing



特性 character 规格 specifications

## 规格 specifications

- |                              |           |
|------------------------------|-----------|
| 1. 导程<br>The guide           | 2/4/8     |
| 2. 步距角<br>Step Angle         | 1.8°      |
| 3. 保持转矩<br>Holding Torque    | ≥140 mN.M |
| 4. 搭配马达<br>Pair with a motor | 步进35      |

- |                                   |                     |
|-----------------------------------|---------------------|
| 2. 加速度<br>acceleration            | 100ms (0.2s)        |
| 5. 重复定位精度<br>positioning accuracy | $\pm 0.05\text{mm}$ |
| 3. 额定电流<br>Rated current          | DC 1.68A            |
| 2. 传感器 (选配)<br>sensor             | (NPN)+1米线           |
| 0. 重量<br>weight                   | -- kg               |

[illegible]