

# STEPPER MOTOR



外部驱动式丝杆步进电机 / Non-Captive Drawing



贯通式丝杆步进电机 / External Driven Drawing



固定轴步进电机 / Captive Linear Stepper Motor



高精度行星减速步进电机 / Planetary Geared Stepper Motor (回程间隙Backlash: 15-25 arcmin)



精密行星减速步进电机 / Planetary Geared Stepper Motor (回程间隙Backlash: 30-45 arcmin)



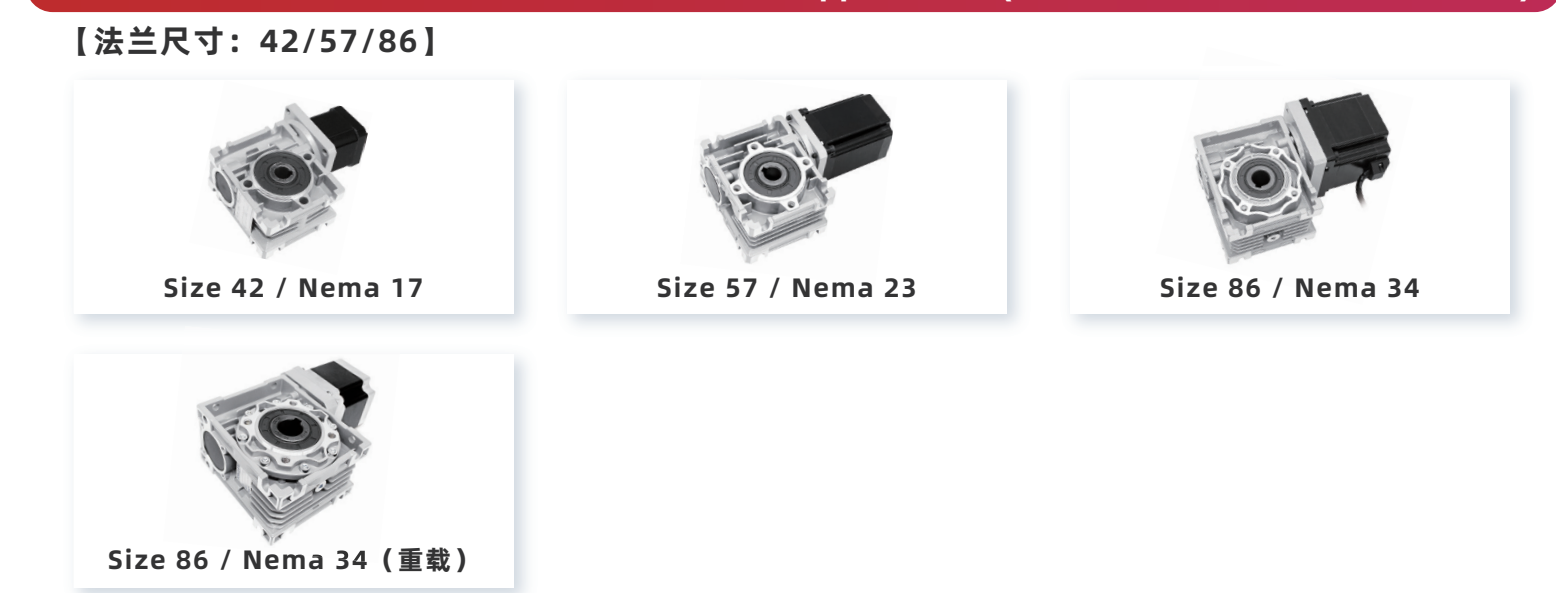
行星减速步进电机 / Planetary Geared Stepper Motor (回程间隙Backlash: 1-1.8°)



传动型蜗轮蜗杆减速步进电机 / Worm Geared Stepper Motor (回程间隙Backlash: 1-1.5°)



精密型蜗轮蜗杆减速步进电机 / Worm Geared Stepper Motor (回程间隙Backlash: 15-18 arcmin)



斜齿行星减速步进电机 / Stepper Motor with Helical Planetary Gearbox



重庆优摩特科技有限公司

CHONGQING UMOT TECHNOLOGY CO., LTD

专心 | 专业 | 专注



微信搜一搜

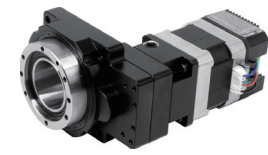
Qumot 优摩特

2026

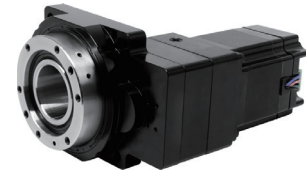
+86-023-86132606  
 info@umottech.com  
 www.umotmotor.cn  
 重庆市九龙坡区火炬大道101号2110号

**中空旋转平台步进电机**  
Stepper Motor with Hollow Rotary Platform

【法兰尺寸：42/57】（回程间隙Backlash: 0.5 arcmin）



Size 42 / Nema 17

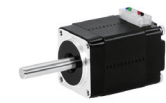


Size 57 / Nema 23

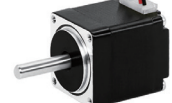
**旋转步进电机**  
Stepper Motor **【可选：闭环、刹车、双出轴】**

**旋转步进电机 / Stepper Motor**

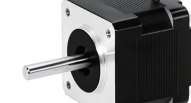
【法兰尺寸：20/28/35/36/39/42/57/60/86】



Size 20 / Nema 8



Size 28 / Nema 11



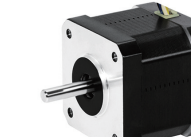
Size 35 / Nema 14



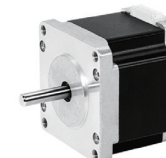
Size 36 / Nema 15



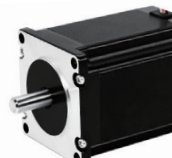
Size 39 / Nema 16



Size 42 / Nema 17



Size 57 / Nema 23



Size 60 / Nema 24



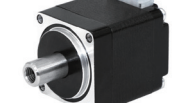
Size 86 / Nema 34

**中空轴步进电机 / Hollow Shaft Stepper Motor**

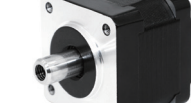
【法兰尺寸：20/28/35/42/57】



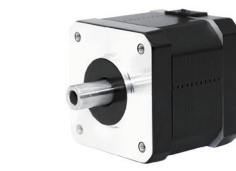
Size 20 / Nema 8



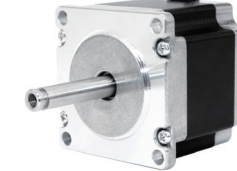
Size 28 / Nema 11



Size 35 / Nema 14



Size 42 / Nema 17



Size 57 / Nema 23

**一体式步进电机**  
Integrated Stepper Motor  
驱动可选：开环/闭环  
类型可选：脉冲式/RS485式/CANopen式

【法兰尺寸：28/35/42/57】



Size 28 / Nema 11



Size 35 / Nema 14



Size 42 / Nema 17



Size 57 / Nema 23



Size 28 / Nema 11



Size 35 / Nema 14



Size 42 / Nema 17



Size 57 / Nema 23



Size 28 / Nema 11



Size 35 / Nema 14



Size 42 / Nema 17



Size 57 / Nema 23



Size 28 / Nema 11



Size 35 / Nema 14



Size 42 / Nema 17



Size 57 / Nema 23



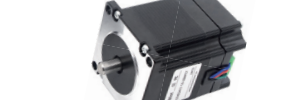
Size 28 / Nema 11



Size 35 / Nema 14



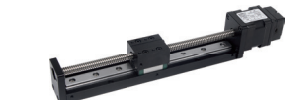
Size 42 / Nema 17



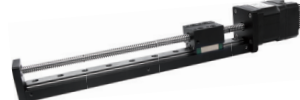
Size 57 / Nema 23



Size 28 / Nema 11



Size 35 / Nema 14



Size 42 / Nema 17



Size 57 / Nema 23

**模组**  
Linear Stage

【模组宽度：20/30/40/60/80/120】



梯形丝杆模组 Size 20mm



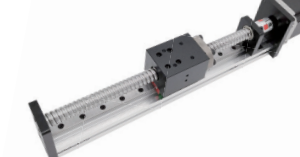
梯形丝杆模组 Size 30mm



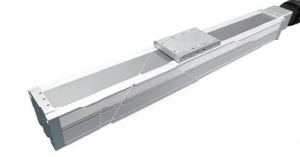
滚珠丝杆模组 Size 30mm



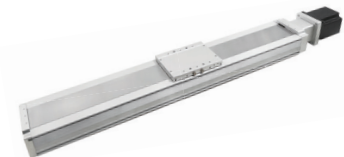
折叠丝杆模组 Size 30mm



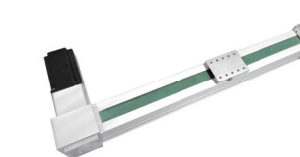
滚珠丝杆模组 Size 40mm



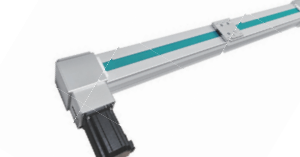
滚珠丝杆模组 Size 80mm



滚珠丝杆模组 Size 120mm



皮带模组 Size 60mm



皮带模组 Size 80mm



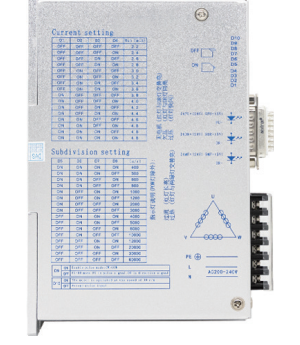
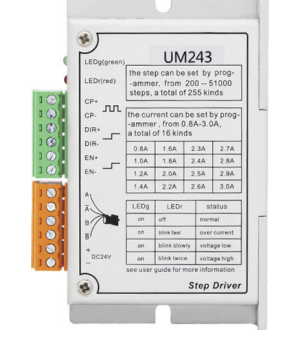
KK 模组

UMot

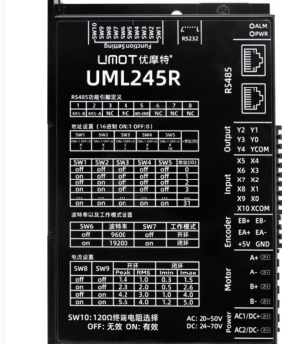
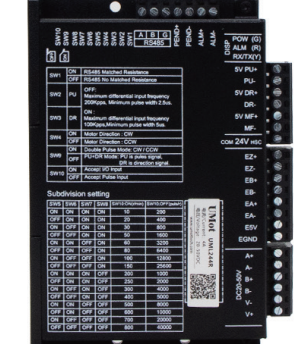
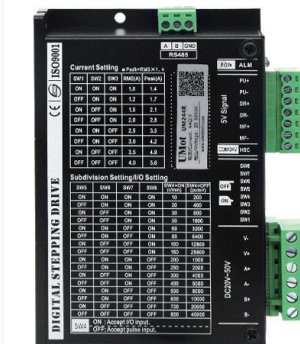


**步进驱动器**  
Stepper Motor Driver

驱动类型：脉冲型 / Drive Type: Pulse



驱动类型：RS485型 / Drive Type: RS485



驱动类型：EtherCAT型 / Drive Type: EtherCAT

