

一体式行星减速 步进电机(RS485)

28/35/42/57系列

Planetary Geared Stepper Motor with Integrated Driver (RS485)

选型手册Catalog



CONTENTS

目录

28 一体式步进驱动器 (RS485)	01
28 Integrated Stepper Motor Driver (RS485)	
28 高精密行星减速一体式步进电机 (RS485)	05
28 Planetary Geared Stepper Motor with Integrated Driver(Blacklash \leq 15 arcmin)(RS485)	
28 传动行星减速一体式步进电机 (RS485)	08
28 Planetary Geared Stepper Motor with Integrated Driver(Blacklash \leq 1.8°)(RS485)	
28 整速比传动行星减速一体式步进电机 (RS485)	10
28 Planetary Geared Stepper Motor with Integrated Driver(Blacklash \leq 1.5°)(RS485)	
35 一体式步进驱动器 (RS485)	12
35 Integrated Stepper Motor Driver(RS485)	
35 高精密行星减速一体式步进电机 (RS485)	16
35 Planetary Geared Stepper Motor with Integrated Driver(Blacklash \leq 15 arcmin)(RS485)	
35 传动行星减速一体式步进电机 (RS485)	19
35 Planetary Geared Stepper Motor with Integrated Driver(Blacklash \leq 1.8°)(RS485)	
42 一体式步进驱动器 (RS485)	21
42 Integrated Stepper Motor Driver(RS485)	
42 高精密方形行星减速一体式步进电机 (RS485)	27
42 Square Flange Planetary Geared Stepper Motor with Integrated Driver(Blacklash \leq 15 arcmin)(RS485)	
42 高精密圆形行星减速一体式步进电机 (RS485)	29
42 Round Flange Planetary Geared Stepper Motor with Integrated Driver(Blacklash \leq 15 arcmin)(RS485)	
42 精密行星减速一体式步进电机 (RS485)	31
42 Planetary Geared Stepper Motor with Integrated Driver(Blacklash \leq 30 arcmin)(RS485)	
42 传动行星减速一体式步进电机 (RS485)	33
42 Planetary Geared Stepper Motor with Integrated Driver(Blacklash \leq 1.8°)(RS485)	
57 一体式步进驱动器 (RS485)	35
57 Integrated Stepper Motor Driver (RS485)	
57 高精密行星减速一体式步进电机 (RS485)	41
57 Planetary Geared Stepper Motor with Integrated Driver(Blacklash \leq 15 arcmin)(RS485)	
57 精密行星减速一体式步进电机 (RS485)	43
57 Planetary Geared Stepper Motor with Integrated Driver(Blacklash \leq 30 arcmin)(RS485)	
57 传动行星减速一体式步进电机 (RS485)	45
57 Planetary Geared Stepper Motor with Integrated Driver(Blacklash \leq 1.8°)(RS485)	

28 一体式步进驱动器 (RS485)

28 Integrated Stepper Motor Driver (RS485)

UMIR28

产品概述 / Product Description

UMIR28 一体式 485 总线型开环步进驱动器是最新推出的带 485 通讯功能的数字式混合步进伺服驱动器，集成了 MODBUS-RTU 标准协议规范，供电接口、IO 输入输出以及通讯接口采用 JST1.25-12P 针座，用户可通过上位机调试软件设置细分、电流、速度、工作模式等多种参数，极大地丰富了产品的实用功能，能够满足大多数场合的应用需要。

UMIR28 integrated 485 bus open-loop stepper motor driver is the latest digital hybrid one with 485 communication. It integrates MODBUS-RTU standard protocol specifications. The power supply interface, IO input and output ports and communication interface use JST1.25-12P pin sockets. Users can set various parameters such as subdivision, current, speed, working mode, etc. through the controller software, which greatly enriches the practical functions of the product and can meet the application needs of most occasions.

产品特点 / Feature

- 新一代 32 位 DSP 技术，平稳性佳、兼容性强、性价比高
New generation of 32-bit DSP technology, with good stability, strong compatibility and high cost performance
- 支持速度模式、位置模式、多段位置 / 速度模式、JOG+、JOG- 及回原点模式
Support speed mode, position mode, multi-segment position/speed mode, JOG+, JOG- and return to origin mode
- 电流、锁机电流、细分、PI 等参数都可通过主站设置及查询
Current, lock current, subdivision, PI and other parameters can be set and queried through the master station
- 采用 RS485 总线，带隔离，支持标准 MODBUS-RTU 协议
Use RS485 bus, with isolation, support standard MODBUS-RTU protocol.
- 默认通讯地址为 1，更多可通过主站设置
The default communication address is 1, more can be set through the master station
- 3 路光电隔离可编程输入接口，接收外部控制信号，实现驱动器使能，启停，限位等功能
3 road optoelectronic isolation programmable input interface, receive external control signals, meet function for driver enable, start and stop, limit and other functions
- 无光电隔离可编程输出接口，需要可更改
No optoelectronic isolation programmable output interface, can be changed if needed
- 内置微细分，低速平稳性极佳
Built-in micro-segmentation, good work for low-speed and stability
- 具有过压、欠压、缺相等报警保护功能
Overvoltage, undervoltage, phase loss protection
- 纯正弦电流矢量控制有效降低电机发热
Pure sinusoidal current vector control effectively reduces motor heating
- 直流供电，输入电压范围：DC12V~40V
DC power supply, input voltage range: DC12V~40V



应用领域 / Application

适合各种中小型自动化设备和仪器，例如：医疗设备、检测设备、打标机、绘图仪等。满足客户低噪声、低发热、布线方便，抗干扰性更强等要求。

Suitable for various small and medium-sized automation equipment and instruments, such as: medical equipment, testing equipment, marking machines, plotters, etc. Satisfy customers with low noise, low heat, convenient wiring and anti-interference performance stronger requirements.

安装注意事项 / Installation Notes

1) 安装一体式步进驱动器时，切勿敲击电机后端盖，以免影响运行性能，在设计安装尺寸时，需考虑接线端子的大小及布线。
2) 为了保证良好的散热条件，实际安装中必须尽可能预留较大安装间隔，若并排安装多台一体式驱动器，则可安装风扇，使一体式驱动器表面形成较强的空气对流，辅助驱动器散热，保证驱动器在可靠工作温度范围内工作。

1) When installing the integrated stepper driver, do not knock on the end motor to avoid affecting the operating performance. When designing the installation size, the size and wiring of the terminal blocks must be considered.

2) In order to ensure good heat dissipation conditions, a larger installation interval must be reserved as much as possible during actual installation. If multiple integrated drives are installed side by side, fans can be installed to form strong air convection on the surface of the integrated drives to assist in heat dissipation of the drives and ensure that the drives operate within a reliable operating temperature range.

电气指标 / Specifications

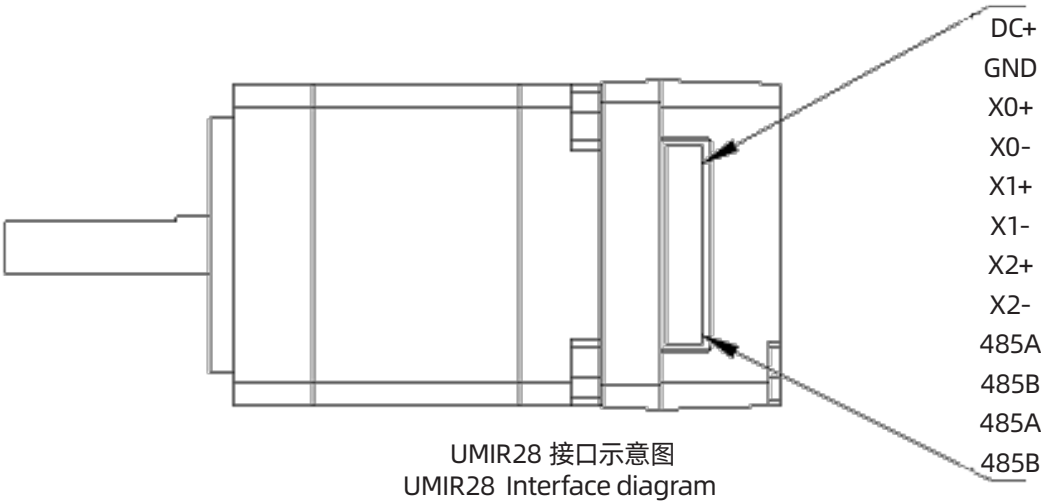
说明 Description	UMIR28			
	最小值 Minimum	典型值 Normally	最大值 Max	单位 unit
输出电流 Output Current	0	-	2600	mA
输入电源电压 Input Voltage	12	24	40	VDC
控制信号输入电流 Input Signal Current	7	10	16	mA
绝缘电阻 Insulation Resistance	50	-	-	MΩ

使用环境及参数 / Working Environment

冷却方式 Cooling		自然冷却、风扇散热 Natural cooling, air cooling
使用环境 Working Environment	场合 Environment	不能放在其他发热的设备旁, 要避免粉尘、油雾、腐蚀性气体, 湿度太大及强振动场所, 禁止有可燃气体和导电灰尘 Do not work to other heating equipment. Avoid dust, oil mist, corrosive gases, places with excessive humidity and strong vibrations. No combustible gases are allowed. body and conductive dust
	温度 Temperature	-25-55℃
	湿度 Humidity	40-90%RH
	振动 Vibration	10~55Hz/0.15mm
保存温度 Storage Temperature		-25℃ ~65℃

产品接口总体描述 / General Description of Product Interface

UMIR28 一体式 485 总线型开环步进驱动器的供电接口、IO 输入输出以及通讯接口采用 JST1.25-12P 直针插座, 如下图所示。
The power supply interface, IO input and output port and communication interface of UMIR28 integrated 485 bus open-loop stepper driver adopt JST1.25-12P straight pin socket, as shown in the figure below.



接口功能总体描述 /General Description of Interface Function

名称 Item	说明 Descption
GND	供电电源负极 Negative pole of power supply
DC+	供电电源正极, 范围: DC12~40V Positive pole of power supply, range: DC12~40V
X0+ X0-	DC 5V~24V 供电, 接外部输入信号, 可支持差分输入 DC 5V~24V power supply, connect external input signal, support differential input
X1+ X1-	DC 5V~24V 供电, 接外部输入信号, 可支持差分输入 DC 5V~24V power supply, connect external input signal, support differential input
X2+ X2-	DC 5V~24V 供电, 接外部输入信号, 可支持差分输入 DC 5V~24V power supply, connect external input signal, support differential input
485A 485B	485 通讯接口 A B 端 485 communication interface A and B
485A 485B	连接至下一驱动的 485 通讯接口 A B 端 Connect to the 485 communication interface A B end of the next drive

指示灯 /Indicator Light

UMIR28 一体式 485 总线型开环步进驱动器的指示灯为内缩式贴片 LED，其基本功能如下表所示。
The indicator light of UMIR28 integrated 485 bus open-loop stepper driver is a retracted SMD LED, and its basic functions are shown in the following table.

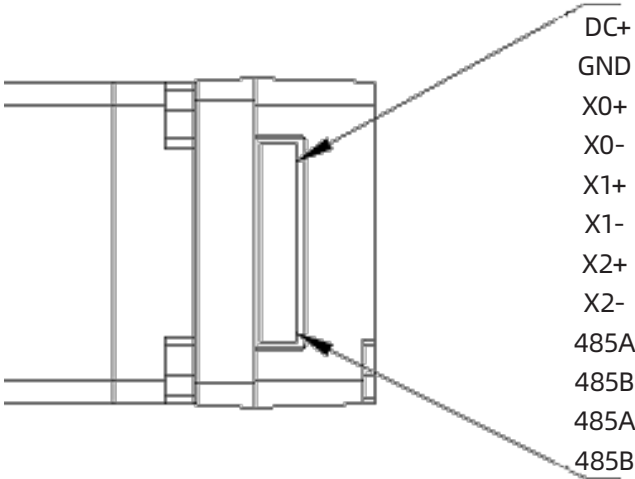
名称 Item	功能 Function	说明 Descption
绿色 LED Green LED 红色 LED Red LED	电源、报警指示灯、保存参数功能指示、恢复出厂设置功能指示、拨码状态切换指示； Power supply, alarm indicator light, save parameter function Can indicate, restore factory settings function instructions, Dial status switching indication;	通电正常时绿灯常亮,红灯熄灭。 保存参数、恢复出厂设置、拨码状态发生切换、设备发生异常时, 红绿灯交替闪烁报警, 其闪烁规律查看第六章节; When the power is on normally, the green light is always on and the red light is off. When saving parameters, restoring factory settings, switching the dial status, or abnormal equipment occurs, the red and green lights flash alternately to alarm. For the flashing pattern, please refer to Chapter 6

RS485 通讯接口 / RS485 Communication Interface

UMIR28 一体式 485 总线型开环步进驱动器的通讯接口采用 JST1.25-12P 的直针插座，如下图所示。其接口共有 12 个引脚，自上向下对应引脚 1~12，其中引脚 9、10、11、12 用于 RS485 的半双工通讯，引脚 9、10 为一组，接 485 通讯的 A、B 端，引脚 11、12 为一组，驱动内部分别与引脚 9、10 级联，可用于连接至下一驱动设备，其他引脚为其他功能，引脚定义如下表所示。

The communication interface of UMIR28 integrated 485 bus open-loop stepper driver adopts JST1.25-12P straight pin socket, as shown in the figure below.

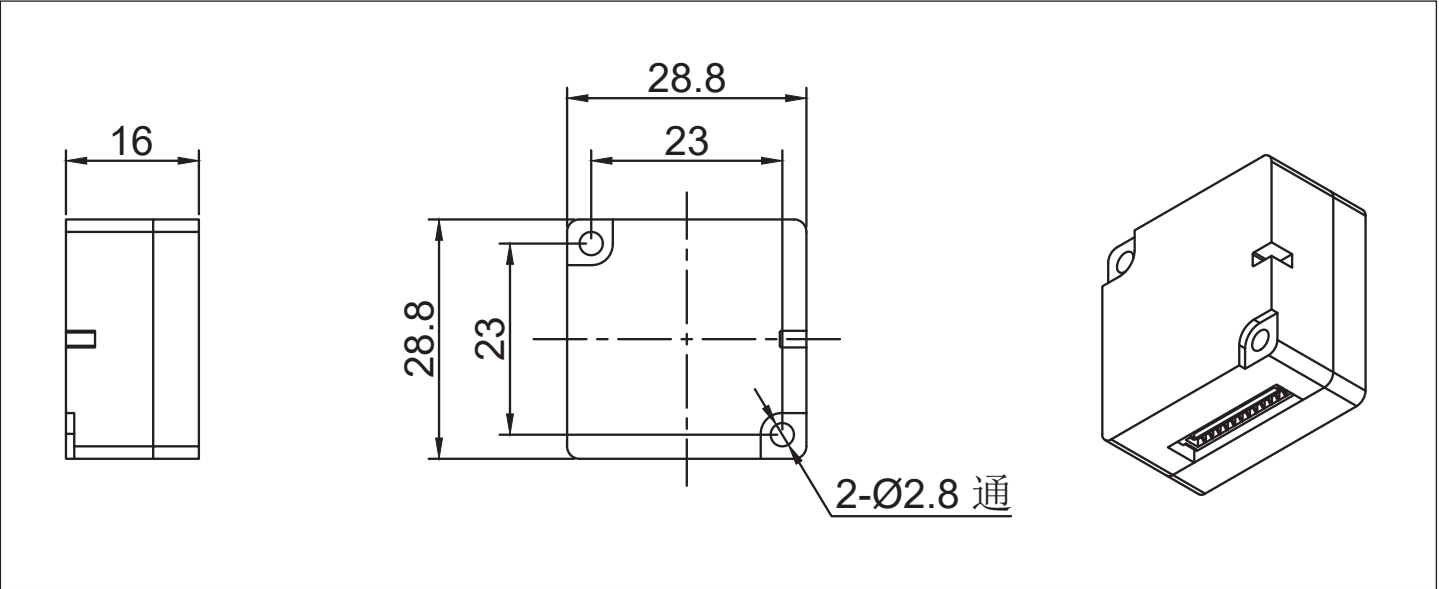
The interface has 12 pins in total, corresponding to pins 1 to 12 from top to bottom, of which pins 9, 10, 11, and 12 are used for half-duplex communication of RS485. Pins 9 and 10 are a group, connected to the A and B ends of 485 communication, and pins 11 and 12 are a group. They are cascaded with pins 9 and 10 inside the driver, respectively, and can be used to connect to the next driver device. Other pins have other functions. The pin definitions are shown in the following table.



UMIR28 一体式 485 总线型开环步进驱动器接口示意图
UMIR28 integrated 485 bus open-loop stepper driver interface diagram

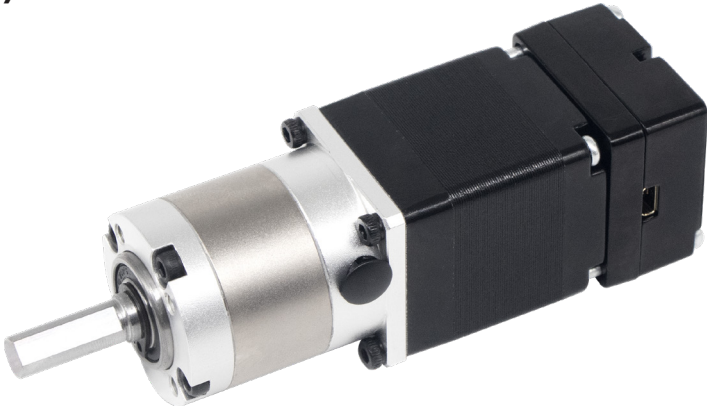
引脚 Pin	定义 Definition
X0+、X0-、X1+、X1-、X2+、X2-	输入 IO 口 Input IO port
485A 485B	485 通讯接口 A B 端 485 communication interface A and B
485A 485B	连接至下一驱动的 485 通讯接口 A B 端 Connect to the 485 communication interface A B end of the next drive

尺寸图 / Dimensions



28 高精行星减速一体式步进电机 (RS485)

28 Planetary Geared Stepper Motor with Integrated Driver (RS485)
(Backlash≤ 15 arcmin)



技术参数 / Technical Data

Model No.	额定电压 Rated Voltage (V)	每相电流 Current /Phase (A)	每相电阻 Resistance /Phase (Ω)	每相电感 Inductance /Phase (mH)	保持转矩 Holding Torque (mN.m)	引出线数 #of Leads	转动惯量 Rotor Inertia (g-cm ²)	重量 Weight (kg)	机身长度 (L1) Length(L1) (mm)	适配减速比 Max. Gear Ratio
28HS0405	2.8	0.8	3.5	1.5	25	4	6	0.08	25.5	≤ 1: 100
28HS2401	3.88	0.67	4.2	4.2	70	4	15	0.13	32.5	≤ 1: 100
28HS5401	4.9	0.7	7	5	95	4	28	0.2	45	≤ 1: 100
28HS7401	6.03	0.67	9	7	110	4	45	0.25	52	≤ 1: 100

减速电机性能参数 (28HS0405) / Geared Stepper Motor Specifications

减速比 Reduction Ratio	4	5	7	10	16	20	25	28	35	40	50	70
减速电机输出扭矩 Torque For Gearbox(mN.m)	96	120	168	240	376	470	587.5	658	822.5	940	1175	1645
减速电机总高度 Total Length(L1+L2+16)	74.5				83							
减速电机总重量 Total Weight(g)	198.2				228.2							
减速级数 Reduction Stage	1				2							
减速器长度 (L2) Gearbox Length(L2) mm	33.0				41.5							
背隙 (无负载时) Backlash At No-load	≤15'				≤20'							
效率 Efficiency	96%				94%							

减速比 Reduction Ratio	64	80	100	125	140	175	200
减速电机输出扭矩 Torque For Gearbox(mN.m)	1440	1800	2550	2812.5	3150	3937.5	4500
减速电机总高度 Total Length(L1+L2+16)	90.5						
减速电机总重量 Total Weight(g)	258.2						
减速级数 Reduction Stage	3						
减速器长度 (L2) Gearbox Length(L2) mm	49.0						
背隙 (无负载时) Backlash At No-load	≤25'						
效率 Efficiency	90%						

减速电机性能参数 (28HS2401) /Geared Stepper Motor Specifications

减速比 Reduction Ratio	4	5	7	10	16	20	25	28	35	40	50	70
减速电机输出扭矩 Torque For Gearbox(mN.m)	268.8	336	470.4	672	1052.8	1316	1645	1842.4	2303	2632	3000	3000
减速电机总高度 Total Length(L1+L2+16)		81.5						90				
减速电机总重量 Total Weight(g)		248.2						278.2				
减速级数 Reduction Stage		1						2				
减速器长度 (L2) Gearbox Length(L2) mm		33.0						41.5				
背隙 (无负载时) Backlash At No-load		≤15'						≤20'				
效 率 Efficiency		96%						94%				

减速比 Reduction Ratio	64	80	100	125	140	175	200
减速电机输出扭矩 Torque For Gearbox(mN.m)	4032	5040	6000	6000	6000	6000	6000
减速电机总高度 Total Length(L1+L2+16)				97.5			
减速电机总重量 Total Weight(g)				308.2			
减速级数 Reduction Stage				3			
减速器长度 (L2) Gearbox Length(L2) mm				49.0			
背隙 (无负载时) Backlash At No-load				≤25'			
效 率 Efficiency				90%			

减速电机性能参数 (28HS5401) /Geared Stepper Motor Specifications

减速比 Reduction Ratio	4	5	7	10	16	20	25	28	35	40	50	70
减速电机输出扭矩 Torque For Gearbox(mN.m)	364.8	456	638.4	912	1422.8	1786	2232.5	2500.4	3125.5	3000	3000	3000
减速电机总高度 Total Length(L1+L2+16)		94						102.5				
减速电机总重量 Total Weight(g)		318.2						348.2				
减速级数 Reduction Stage		1						2				
减速器长度 (L2) Gearbox Length(L2) mm		33.0						41.5				
背隙 (无负载时) Backlash At No-load		≤15'						≤20'				
效 率 Efficiency		96%						94%				

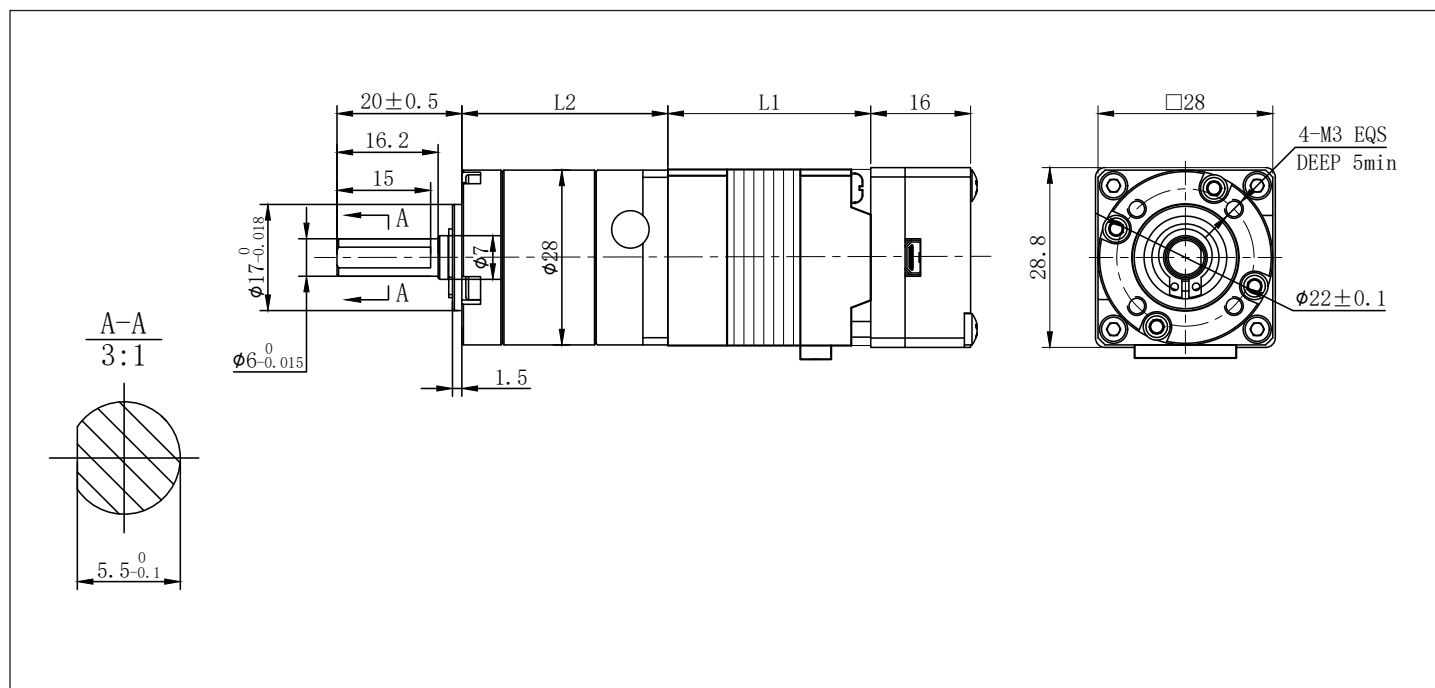
减速比 Reduction Ratio	64	80	100	125	140	175	200
减速电机输出扭矩 Torque For Gearbox(mN.m)	5472	6000	6000	6000	6000	6000	6000
减速电机总高度 Total Length(L1+L2+16)				110			
减速电机总重量 Total Weight(g)				378.2			
减速级数 Reduction Stage				3			
减速器长度 (L2) Gearbox Length(L2) mm				49.0			
背隙 (无负载时) Backlash At No-load				≤25'			
效 率 Efficiency				90%			

减速电机性能参数 (28HS7401) / Geared Stepper Motor Specifications

减速比 Reduction Ratio	4	5	7	10	16	20	25	28	35	40	50	70
减速电机输出扭矩 Torque For Gearbox(mN.m)	422.4	528	739.2	1000	1654.4	2068	2585	2895.2	3619	3000	3000	3000
减速电机总高度 Total Length(L1+L2+16)		101						109.5				
减速电机总重量 Total Weight(g)		368.2						398.2				
减速级数 Reduction Stage		1						2				
减速器长度 (L2) Gearbox Length(L2) mm		33.0						41.5				
背隙 (无负载时) Backlash At No-load		≤15'						≤20'				
效率 Efficiency		96%						94%				

减速比 Reduction Ratio	64	80	100	125	140	175	200
减速电机输出扭矩 Torque For Gearbox(mN.m)	6000	6000	6000	6000	6000	6000	6000
减速电机总高度 Total Length(L1+L2+16)				117			
减速电机总重量 Total Weight(g)				428.2			
减速级数 Reduction Stage				3			
减速器长度 (L2) Gearbox Length(L2) mm				49.0			
背隙 (无负载时) Backlash At No-load				≤25'			
效率 Efficiency				90%			

尺寸图 / Dimensions



28 传动行星减速一体式步进电机 (RS485)

28 Planetary Geared Stepper Motor with Integrated Driver (RS485)
(Backlash≤ 1.8°)



技术参数 /Technical Data

Model No.	额定电压 Rated Voltage (V)	每相电流 Current /Phase (A)	每相电阻 Resistance /Phase (Ω)	每相电感 Inductance /Phase (mH)	保持转矩 Holding Torque (mN.m)	引出线数 #of Leads	转动惯量 Rotor Inertia (g-cm ²)	重量 Weight (kg)	机身长度 (L1) Length(L1) (mm)	适配减速比 Max. Gear Ratio
28HS0405	2.8	0.8	3.5	1.5	25	4	6	0.08	25.5	≤ 1: 369
28HS2401	3.88	0.67	5.8	4.2	70	4	15	0.13	32.5	≤ 1: 369
28HS5401	4.9	0.7	7	5	95	4	28	0.2	45	≤ 1: 369
28HS7401	6.03	0.67	9	7	110	4	45	0.25	52	≤ 1: 369

减速电机性能参数 (28HS0405) /Geared Stepper Motor Specifications

减速比 Reduction Ratio	3.7	5.2	14	19	27	51	71	100	139	189	254	369
减速电机输出扭矩 Torque For Gearbox(mN.m)	83	117	284	385	547	931	1296	1825	2537	3119	4000	4000
减速电机总高度 Total Length(L1+L2+16)mm	70.5			76.6				84.5			91.4	
减速电机总重量 Total Weight(g)	178.2			198.2				218.2			238.2	
减速级数 Reduction Stage	1			2				3			4	
减速器长度 (L2) Gearbox Length(L2) mm	29.0			36.1				43.0			49.9	
背隙 (无负载时) Backlash At No-load	≤1°			≤1.2°				≤1.5°			≤1.8°	
效率 Efficiency	90%			81%				73%			66%	

减速电机性能参数 (28HS2401) /Geared Stepper Motor Specifications

减速比 Reduction Ratio	3.7	5.2	14	19	27	51	71	100	139	189	254	369
减速电机输出扭矩 Torque For Gearbox(mN.m)	234	327.5	794	1077	1531	2606	3628	4000	4000	4000	4000	4000
减速电机总高度 Total Length(L1+L2+18)mm	77.5			84.6				91.5			98.4	
减速电机总重量 Total Weight(g)	228.2			248.2				268.2			288.2	
减速级数 Reduction Stage	1			2				3			4	
减速器长度 (L2) Gearbox Length(L2) mm	29.0			36.1				43.0			49.9	
背隙 (无负载时) Backlash At No-load	≤1°			≤1.2°				≤1.5°			≤1.8°	
效率 Efficiency	90%			81%				73%			66%	

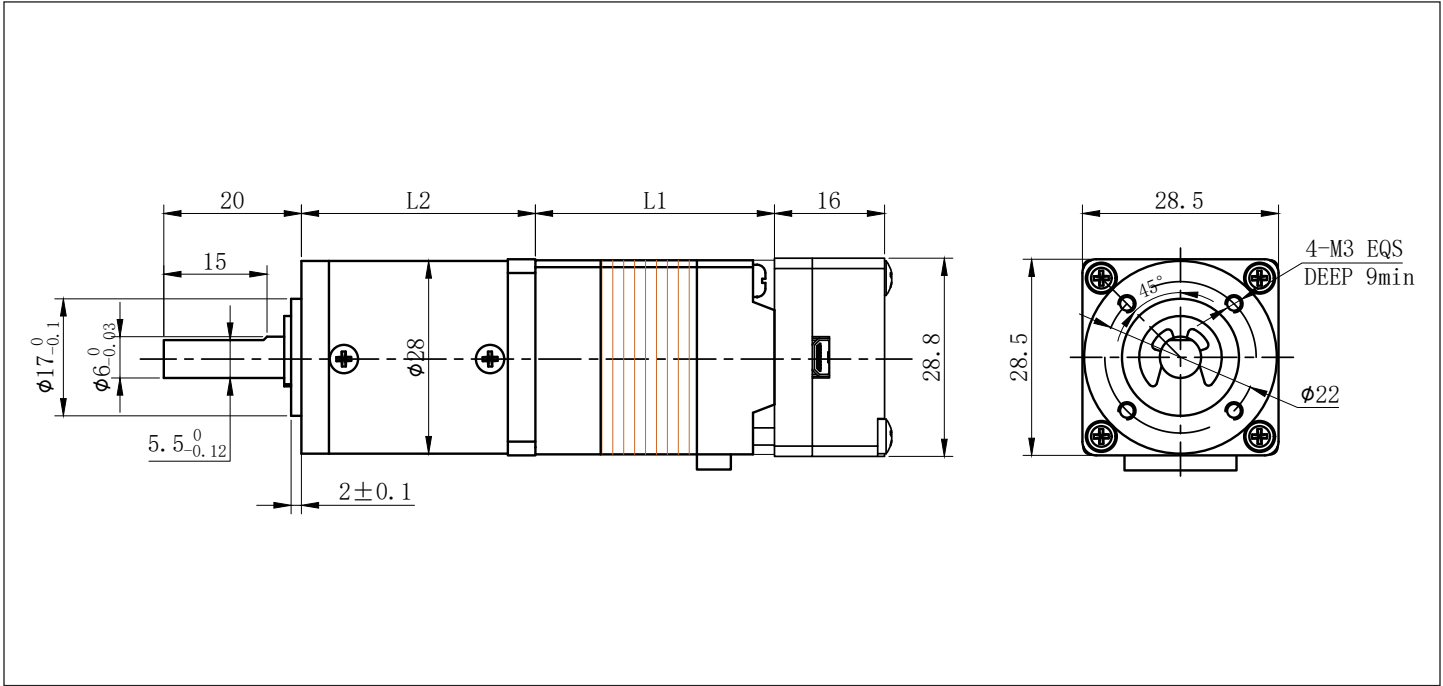
减速电机性能参数 (28HS5401) / Geared Stepper Motor Specifications

减速比 Reduction Ratio	3.7	5.2	14	19	27	51	71	100	139	189	254	369
减速电机输出扭矩 Torque For Gearbox(mN.m)	317	443	1077	1462	2000	3537	4000	4000	4000	4000	4000	4000
减速电机总高度 Total Length(L1+L2+18)mm	90		97.1			104				110.9		
减速电机总重量 Total Weight(g)	298.2		318.2			338.2				358.2		
减速级数 Reduction Stage	1		2			3				4		
减速器长度 (L2) Gearbox Length(L2) mm	29.0		36.1			43.0				49.9		
背隙 (无负载时) Backlash At No-load	≤1°		≤1.2°			≤1.5°				≤1.8°		
效率 Efficiency	90%		81%			73%				66%		

减速电机性能参数 (28HS7401) / Geared Stepper Motor Specifications

减速比 Reduction Ratio	3.7	5.2	14	19	27	51	71	100	139	189	254	369
减速电机输出扭矩 Torque For Gearbox(mN.m)	367	513	1247	1693	2000	4000	4000	4000	4000	4000	4000	4000
减速电机总高度 Total Length(L1+L2+18)mm	97		104.1			111				117.9		
减速电机总重量 Total Weight(g)	348.2		368.2			388.2				408.2		
减速级数 Reduction Stage	1		2			3				4		
减速器长度 (L2) Gearbox Length(L2) mm	29.0		36.1			43.0				49.9		
背隙 (无负载时) Backlash At No-load	≤1°		≤1.2°			≤1.5°				≤1.8°		
效率 Efficiency	90%		81%			73%				66%		

尺寸图 / Dimensions



28 整速比传动行星减速一体式步进电机 (RS485)

28 Planetary Geared Stepper Motor with Integrated Driver (RS485)
(Backlash≤ 1.5°)



技术参数 /Technical Data

Model No.	额定电压 Rated Voltage (V)	每相电流 Current /Phase (A)	每相电阻 Resistance /Phase (Ω)	每相电感 Lnductance /Phase (mH)	保持转矩 Holding Torque (mN.m)	引出线数 #of Leads	转动惯量 Rotor Inertia (g-cm ²)	重 量 Weight (kg)	机身长度 (L1) Length(L1) (mm)	适配减速比 Max. Gear Ratio
28HS0405	2.8	0.8	3.5	1.5	25	4	6	0.08	25.5	≤ 1: 216
28HS2401	3.88	0.67	5.8	4.2	70	4	15	0.13	32.5	≤ 1: 216
28HS5401	4.9	0.7	7	5	95	4	28	0.2	45	≤ 1: 216
28HS7401	6.03	0.67	9	7	110	4	45	0.25	52	≤ 1: 216

减速电机性能参数 (28HS0405) /Geared Stepper Motor Specifications

减速比 Reduction Ratio	4	6	16	24	36	64	96	144	216
减速电机输出扭矩 Torque For Gearbox(mN.m)	90	135	324	486	729	1168	1752	2628	3942
减速电机总高度 Total Length(L1+L2+16)mm	70.4		77.3		84.2		84.2		84.2
减速电机总重量 Total Weight(g)	173.2		195.2		217.2		217.2		217.2
减速级数 Reduction Stage	1		2		3		3		3
减速器长度 (L2) Gearbox Length(L2) mm	28.9		35.8		42.7		42.7		42.7
背隙 (无负载时) Backlash At No-load	≤1°		≤1.2°		≤1.5°		≤1.5°		≤1.5°
效 率 Efficiency	90%		81%		73%		73%		73%

减速电机性能参数 (28HS2401) /Geared Stepper Motor Specifications

减速比 Reduction Ratio	4	6	16	24	36	64	96	144	216
减速电机输出扭矩 Torque For Gearbox(mN.m)	252	378	907	1361	2041	3270	4906	5000	5000
减速电机总高度 Total Length(L1+L2+16)mm	77.4		84.3		91.2		91.2		91.2
减速电机总重量 Total Weight(g)	193.2		215.2		237.2		237.2		237.2
减速级数 Reduction Stage	1		2		3		3		3
减速器长度 (L2) Gearbox Length(L2) mm	28.9		35.8		42.7		42.7		42.7
背隙 (无负载时) Backlash At No-load	≤1°		≤1.2°		≤1.5°		≤1.5°		≤1.5°
效 率 Efficiency	90%		81%		73%		73%		73%

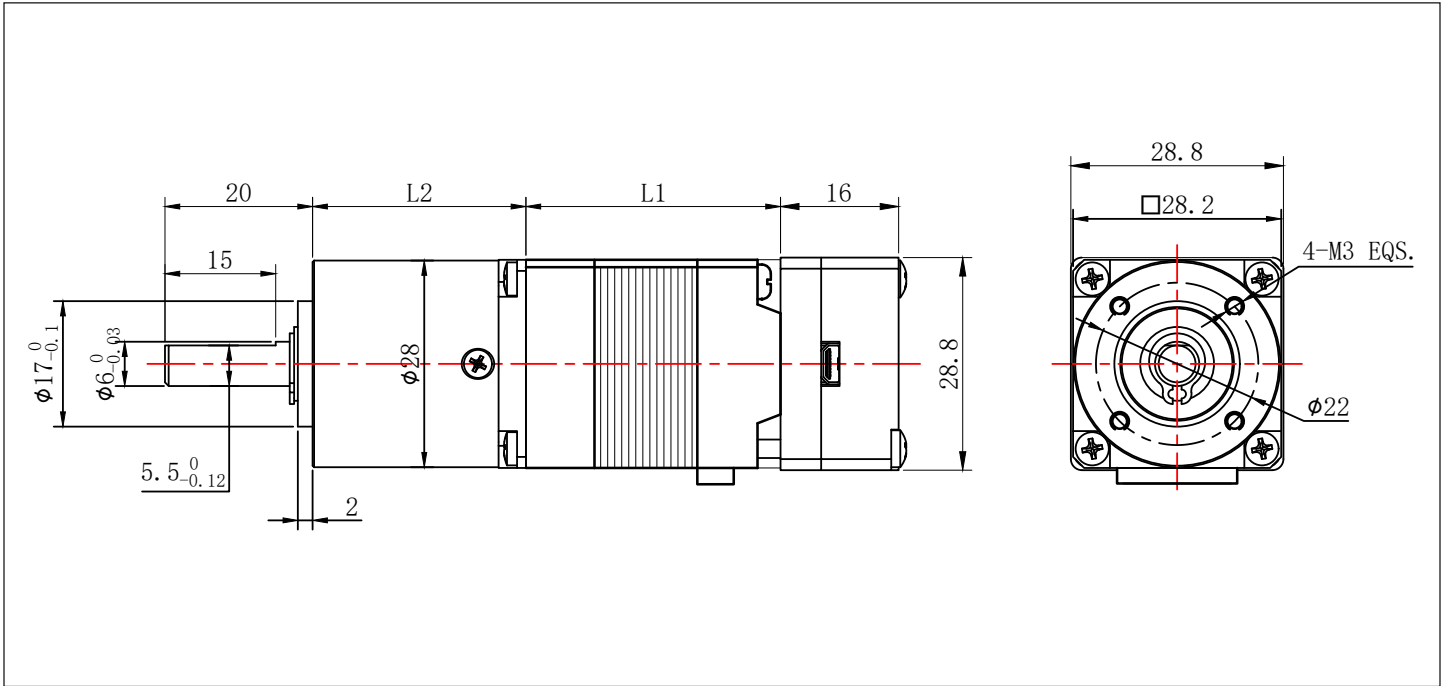
减速电机性能参数 (28HS5401) /Geared Stepper Motor Specifications

减速比 Reduction Ratio	4	6	16	24	36	64	96	144	216
减速电机输出扭矩 Torque For Gearbox(mN.m)	342	513	1231	1847	2770	4438	5000	5000	5000
减速电机总高度 Total Length(L1+L2+16)mm	89.9		96.8		103.7				
减速电机总重量 Total Weight(g)	293.2		315.2		337.2				
减速级数 Reduction Stage	1		2		3				
减速器长度 (L2) Gearbox Length(L2) mm	28.9		35.8		42.7				
背隙 (无负载时) Backlash At No-load	≤1°		≤1.2°		≤1.5°				
效率 Efficiency	90%		81%		73%				

减速电机性能参数 (28HS7401) /Geared Stepper Motor Specifications

减速比 Reduction Ratio	4	6	16	24	36	64	96	144	216
减速电机输出扭矩 Torque For Gearbox(mN.m)	489	733	1426	2138	3208	5000	5000	5000	5000
减速电机总高度 Total Length(L1+L2+16)mm	96.9		103.8		110.7				
减速电机总重量 Total Weight(g)	343.2		365.2		387.2				
减速级数 Reduction Stage	1		2		3				
减速器长度 (L2) Gearbox Length(L2) mm	28.9		35.8		42.7				
背隙 (无负载时) Backlash At No-load	≤1°		≤1.2°		≤1.5°				
效率 Efficiency	90%		81%		73%				

尺寸图 /Dimensions



35 一体式步进驱动器 (RS485)

35 Integrated Stepper Motor Driver (RS485)

UMIR35

产品概述 / Product Description

UMIR35 一体式 485 总线型开环步进驱动器是最新推出的带 485 通讯功能的数字式混合步进伺服驱动器，集成了 MODBUS-RTU 标准协议规范，供电接口、IO 输入输出以及通讯接口采用 JST1.25-12P 针座，用户可通过上位机调试软件设置细分、电流、速度、工作模式等多种参数，极大地丰富了产品的实用功能，能够满足大多数场合的应用需要。

UMIR35 integrated 485 bus open-loop stepper motor driver is the latest digital hybrid one with 485 communication. It integrates MODBUS-RTU standard protocol specifications. The power supply interface, IO input and output ports and communication interface use JST1.25-12P pin sockets. Users can set various parameters such as subdivision, current, speed, working mode, etc. through the controller software, which greatly enriches the practical functions of the product and can meet the application needs of most occasions.

产品特点 / Feature

- 新一代 32 位 DSP 技术，平稳性佳、兼容性强、性价比高
New generation of 32-bit DSP technology, with good stability, strong compatibility and high cost performance
- 支持速度模式、位置模式、多段位置 / 速度模式、JOG+、JOG- 及回原点模式
Support speed mode, position mode, multi-segment position/speed mode, JOG+, JOG- and return to origin mode.
- 电流、锁机电流、细分、PI 等参数都可通过主站设置及查询
Current, lock current, subdivision, PI and other parameters can be set and queried through the master station.
- 采用 RS485 总线，带隔离，支持标准 MODBUS-RTU 协议
Use RS485 bus, with isolation, support standard MODBUS-RTU protocol
- 默认通讯地址为 1，更多可通过主站设置
The default communication address is 1, more can be set through the master station
- 3 路光电隔离可编程输入接口，接收外部控制信号，实现驱动器使能，启停，限位等功能
3 road optoelectronic isolation programmable input interface, receive external control signals, meet function for driver enable, start and stop, limit and other functions
- 无光电隔离可编程输出接口，需要可更改
No optoelectronic isolation programmable output interface, can be changed if needed
- 内置微细分，低速平稳性极佳
Built-in micro-segmentation, good work for low-speed and stability
- 具有过压、欠压、缺相等报警保护功能
Overvoltage, undervoltage, phase loss protection
- 纯正弦电流矢量控制有效降低电机发热
Pure sinusoidal current vector control effectively reduces motor heating
- 直流供电，输入电压范围：DC12V~40V
DC power supply, input voltage range: DC12V~40V



应用领域 / Application

适合各种中小型自动化设备和仪器，例如：医疗设备、检测设备、打标机、绘图仪等。满足客户低噪声、低发热、布线方便，抗干扰性更强等要求。

Suitable for various small and medium-sized automation equipment and instruments, such as: medical equipment, testing equipment, marking machines, plotters, etc. Satisfy customers with low noise, low heat, convenient wiring and anti-interference performance stronger requirements.

电气指标 / Specifications

说明 Description	UMIR35			
	最小值 Minimum	典型值 Normally	最大值 Max	单位 unit
输出电流 Output Current	0	-	2600	mA
输入电源电压 Input Voltage	12	24	40	VDC
控制信号输入电流 Input Signal Current	7	10	16	mA
绝缘电阻 Insulation Resistance	50	-	-	MΩ

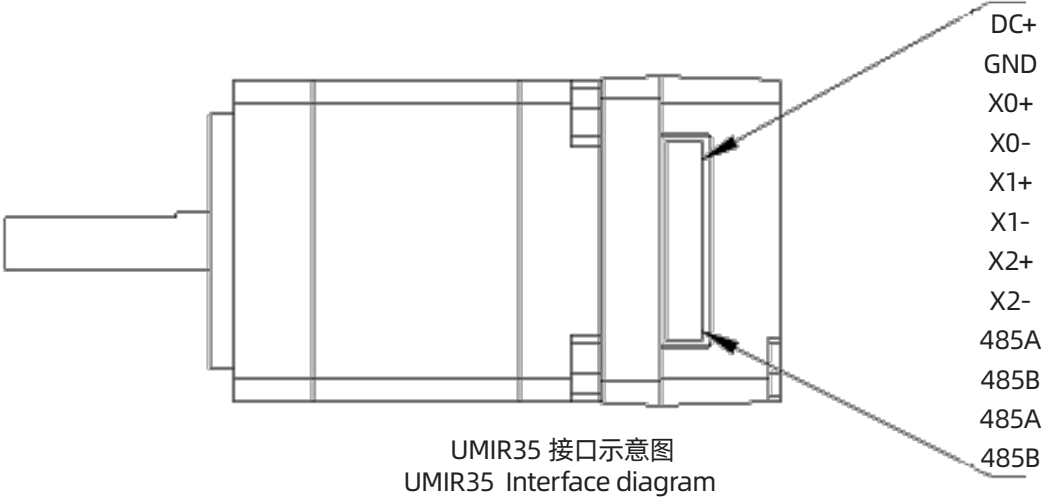
使用环境及参数 / Working Environment

冷却方式 Cooling		自然冷却、风扇散热 Natural cooling, air cooling
使用环境 Working Environment	场合 Environment	不能放在其他发热的设备旁, 要避免粉尘、油雾、腐蚀性气体, 湿度太大及强振动场所, 禁止有可燃气体和导电灰尘 Do not work to other heating equipment. Avoid dust, oil mist, corrosive gases, places with excessive humidity and strong vibrations. No combustibile gases are allowed.body and conductive dust
	温度 Temperature	-25-55℃
	湿度 Humidity	40-90%RH
	振动 Vibration	10~55Hz/0.15mm
保存温度 Storage Temperature		-25℃ ~65℃

产品接口总体描述 / General Description of Product Interface

UMIR35 一体式 485 总线型开环步进驱动器的供电接口、IO 输入输出口以及通讯接口采用 JST1.25-12P 直针插座, 如下图所示

The power supply interface, IO input and output port and communication interface of UMIR35 integrated 485 bus open-loop stepper driver adopt JST1.25-12P straight pin socket, as shown in the figure below.



接口功能总体描述 /General Description of Interface Function

名称 Item	说明 Descption
GND	供电电源负极 Negative pole of power supply
DC+	供电电源正极, 范围: DC12~40V Positive pole of power supply, range: DC12~40V
X0+ X0-	DC 5V~24V 供电, 接外部输入信号, 可支持差分输入 DC 5V~24V power supply, connect external input signal, support differential input
X1+ X1-	DC 5V~24V 供电, 接外部输入信号, 可支持差分输入 DC 5V~24V power supply, connect external input signal, support differential input
X2+ X2-	DC 5V~24V 供电, 接外部输入信号, 可支持差分输入 DC 5V~24V power supply, connect external input signal, support differential input
485A 485B	485 通讯接口 A B 端 485 communication interface A and B
485A 485B	连接至下一驱动的 485 通讯接口 A B 端 Connect to the 485 communication interface A B end of the next drive

指示灯 /Indicator Light

UMIR35 一体式 485 总线型开环步进驱动器的指示灯为内缩式贴片 LED, 其基本功能如下表所示。

The indicator light of UMIR35 integrated 485 bus open-loop stepper driver is a retracted SMD LED, and its basic functions are shown in the following table.

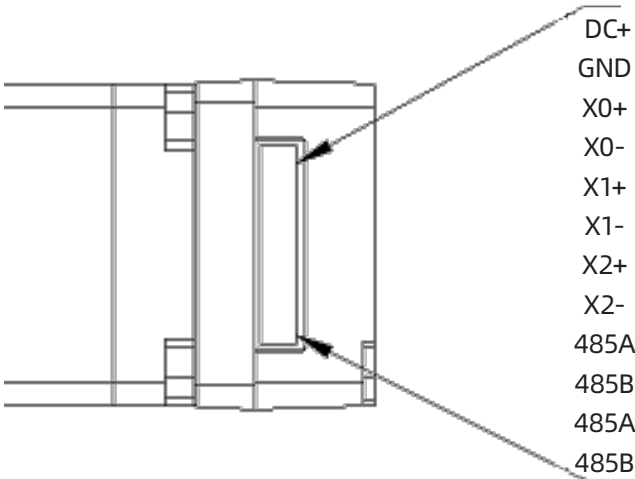
名称 Item	功能 Function	说明 Descption
绿色 LED Green LED 红色 LED Red LED	电源、报警指示灯、保存参数功能指示、恢复出厂设置功能指示、拨码状态切换指示; Power supply, alarm indicator light, save parameter function Can indicate, restore factory settings function instructions, Dial status switching indication;	通电正常时绿灯常亮,红灯熄灭。 保存参数、恢复出厂设置、拨码状态发生切换、设备发生异常时, 红绿灯交替闪烁报警, 其闪烁规律查看第六章节; When the power is on normally, the green light is always on and the red light is off. When saving parameters, restoring factory settings, switching the dial status, or abnormal equipment occurs, the red and green lights flash alternately to alarm. For the flashing pattern, please refer to Chapter 6

RS485 通讯接口 /RS485 Communication Interface

UMIR35 一体式 485 总线型开环步进驱动器的通讯接口采用 JST1.25-12P 的直针插座，如下图所示。其接口共有 12 个引脚，自上向下对应引脚 1~12，其中引脚 9、10、11、12 用于 RS485 的半双工通讯，引脚 9、10 为一组，接 485 通讯的 A、B 端，引脚 11、12 为一组，驱动内部分别与引脚 9、10 级联，可用于连接至下一驱动设备，其他引脚为其他功能，引脚定义如下表所示。

The communication interface of UMIR35 integrated 485 bus open-loop stepper driver adopts JST1.25-12P straight pin socket, as shown in the figure below.

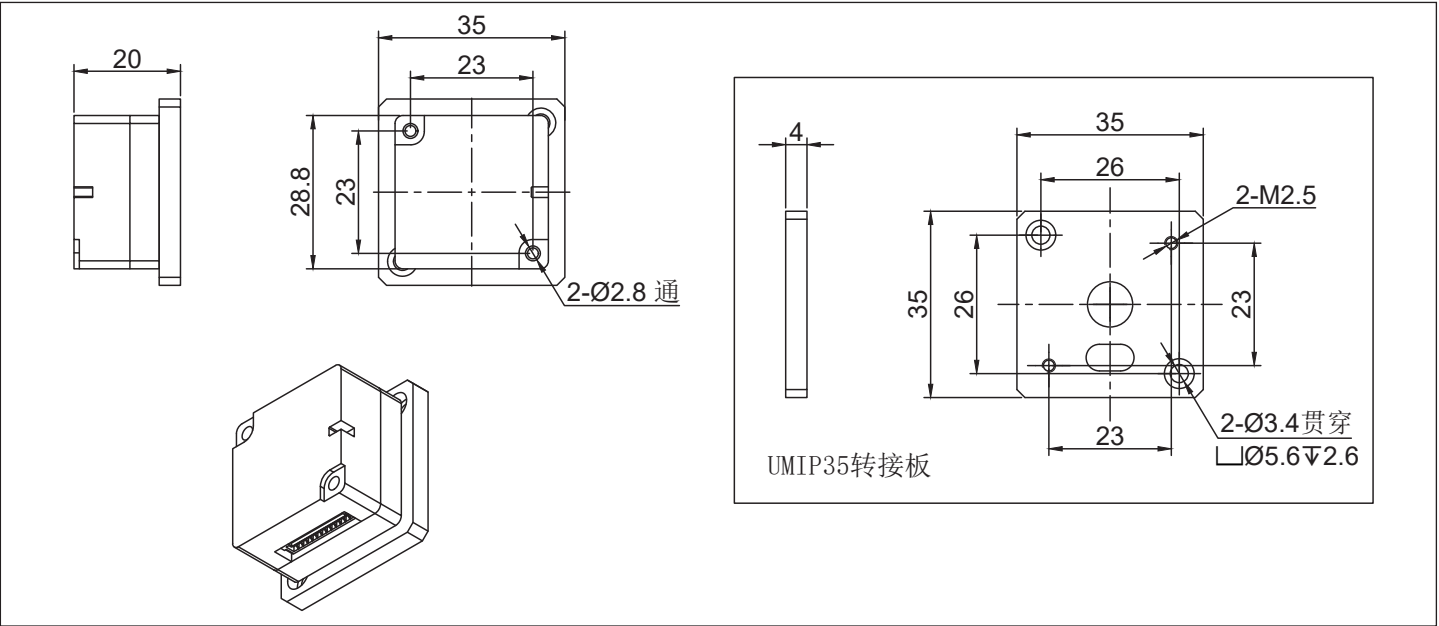
The interface has 12 pins in total, corresponding to pins 1 to 12 from top to bottom, of which pins 9, 10, 11, and 12 are used for half-duplex communication of RS485. Pins 9 and 10 are a group, connected to the A and B ends of 485 communication, and pins 11 and 12 are a group. They are cascaded with pins 9 and 10 inside the driver, respectively, and can be used to connect to the next driver device. Other pins have other functions. The pin definitions are shown in the following table.



UMIR35 一体式 485 总线型开环步进驱动器接口示意图
UMIR35 integrated 485 bus open-loop stepper driver interface diagram

引脚 Pin	定义 Definition
X0+、X0-、X1+、X1-、X2+、X2-	输入 IO 口 Input IO port
485A 485B	485 通讯接口 A B 端 485 communication interface A and B
485A 485B	连接至下一驱动的 485 通讯接口 A B 端 Connect to the 485 communication interface A B end of the next drive

尺寸图 /Dimensions



35 高精精密行星减速一体式步进电机 (RS485)

35 Planetary Geared Stepper Motor with Integrated Driver (RS485)
(Backlash≤ 15 arcmin)



技术参数 / Technical Data

Model No.	额定电压 Rated Voltage (V)	每相电流 Current /Phase (A)	每相电阻 Resistance /Phase (Ω)	每相电感 Inductance /Phase (mH)	保持转矩 Holding Torque (mN.m)	引出线数 #of Leads	转动惯量 Rotor Inertia (g·cm ²)	重量 Weight (kg)	机身长度 (L1) Length(L1) (mm)	适配减速比 Max. Gear Ratio
35HSH2408	4.5	1.0	4.5	5.5	200	4	25	0.15	28	≤ 1: 210
35HSH5401	4.5	1.0	4.5	7	250	4	35	0.25	38.5	≤ 1: 210
35HSH6403	2.77	1.68	1.65	2.5	320	4	40	0.28	48	≤ 1: 210

减速电机性能参数 (35HSH2408) / Geared Stepper Motor Specifications

减速比 Reduction Ratio	3	4	5	6	7	9	15	20	25	30	35	42
减速电机输出扭矩 Torque For Gearbox(mN.m)	576	768	960	1152	1344	1692	2820	3760	4700	5640	6580	7000
减速电机总高度 Total Length(L1+L2+20)			88						97.5			
减速电机总重量 Total Weight(g)			349						399			
减速级数 Reduction Stage			1						2			
减速器长度 (L2) Gearbox Length(L2) mm			40.0						49.5			
背隙 (无负载时) Backlash At No-load			≤15'						≤20'			
效率 Efficiency			96%						94%			

减速比 Reduction Ratio	45	100	120	140	150	175	210
减速电机输出扭矩 Torque For Gearbox(mN.m)	8100	9000	9000	9000	8500	8500	8500
减速电机总高度 Total Length(L1+L2+20)				107			
减速电机总重量 Total Weight(g)				459			
减速级数 Reduction Stage				3			
减速器长度 (L2) Gearbox Length(L2) mm				59.0			
背隙 (无负载时) Backlash At No-load				≤25'			
效率 Efficiency				90%			

减速电机性能参数 (35HSH5401) /Geared Stepper Motor Specifications

减速比 Reduction Ratio	3	4	5	6	7	9	15	20	25	30	35	42
减速电机输出扭矩 Torque For Gearbox(mN.m)	720	960	1200	1440	1680	2115	3525	4700	5875	7000	7000	7000
减速电机总高度 Total Length(L1+L2+20)			98.5						108			
减速电机总重量 Total Weight(g)			449						499			
减速级数 Reduction Stage			1						2			
减速器长度 (L2) Gearbox Length(L2) mm			40.0						49.5			
背隙 (无负载时) Backlash At No-load			≤15'						≤20'			
效率 Efficiency			96%						94%			

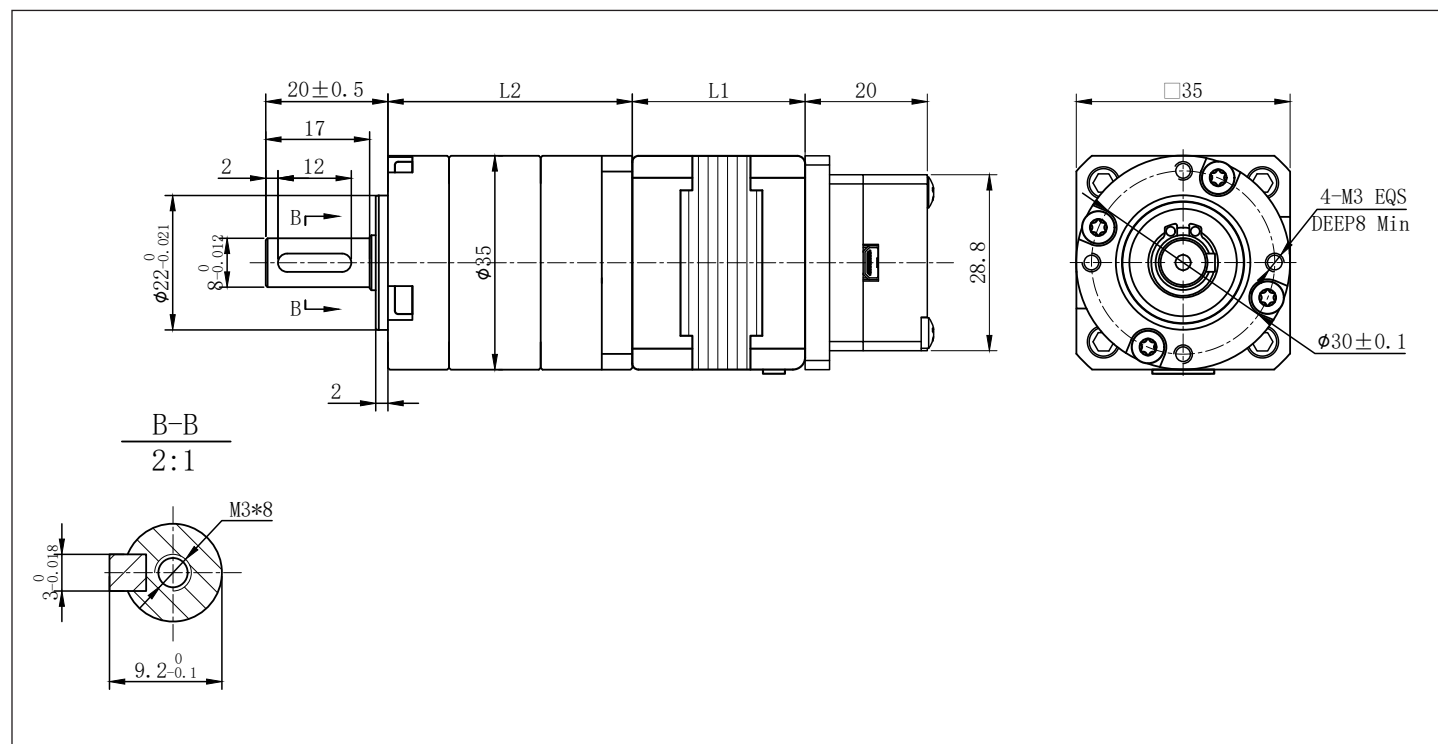
减速比 Reduction Ratio	45	100	120	140	150	175	210
减速电机输出扭矩 Torque For Gearbox(mN.m)	10000	9000	9000	9000	8500	8500	8500
减速电机总高度 Total Length(L1+L2+20)				117.5			
减速电机总重量 Total Weight(g)				559			
减速级数 Reduction Stage				3			
减速器长度 (L2) Gearbox Length(L2) mm				59.0			
背隙 (无负载时) Backlash At No-load				≤25'			
效率 Efficiency				90%			

减速电机性能参数 (35HSH6403) /Geared Stepper Motor Specifications

减速比 Reduction Ratio	3	4	5	6	7	9	15	20	25	30	35	42
减速电机输出扭矩 Torque For Gearbox(mN.m)	921.6	1228.8	1536	1843.2	2000	2707.2	4512	6016	7520	7000	7000	7000
减速电机总高度 Total Length(L1+L2+20)			108						117.5			
减速电机总重量 Total Weight(g)			479						529			
减速级数 Reduction Stage			1						2			
减速器长度 (L2) Gearbox Length(L2) mm			40.0						49.5			
背隙 (无负载时) Backlash At No-load			≤15'						≤20'			
效率 Efficiency			96%						94%			

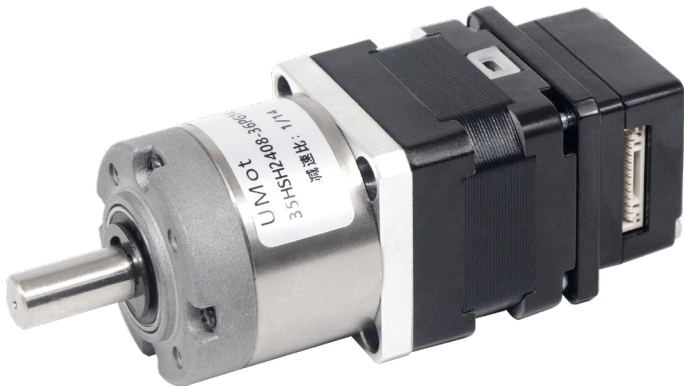
减速比 Reduction Ratio	45	100	120	140	150	175	210
减速电机输出扭矩 Torque For Gearbox(mN.m)	10000	9000	9000	9000	8500	8500	8500
减速电机总高度 Total Length(L1+L2+20)				127			
减速电机总重量 Total Weight(g)				589			
减速级数 Reduction Stage				3			
减速器长度 (L2) Gearbox Length(L2) mm				59.0			
背隙 (无负载时) Backlash At No-load				≤25'			
效率 Efficiency				90%			

尺寸图 / Dimensions



35 传动行星减速一体式步进电机 (RS485)

35 Planetary Geared Stepper Motor with Integrated Driver (RS485)
(Backlash≤ 1.8°)



技术参数 / Technical Data

Model No.	额定电压 Rated Voltage (V)	每相电流 Current /Phase (A)	每相电阻 Resistance /Phase (Ω)	每相电感 Inductance /Phase (mH)	保持转矩 Holding Torque (mN.m)	引出线数 #of Leads	转动惯量 Rotor Inertia (g-cm ²)	重量 Weight (kg)	机身长度 (L1) Length(L1) (mm)	适配减速比 Max. Gear Ratio
35HS2408	4.5	1.0	4.5	5.5	200	4	25	0.15	28	≤ 1: 139
35HS5401	4.5	1.0	4.5	7	250	4	35	0.25	38.5	≤ 1: 139

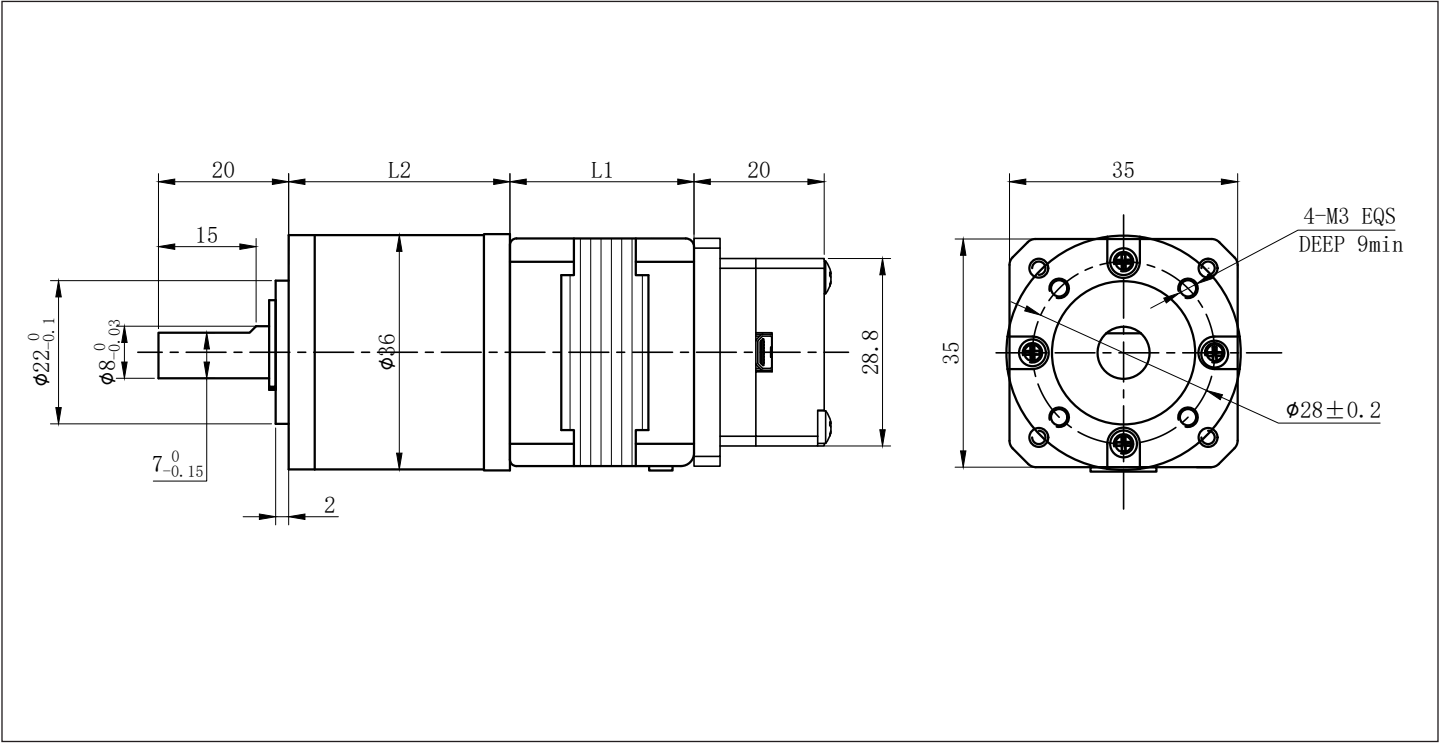
减速电机性能参数 (35HS2408) / Geared Stepper Motor Specifications

减速比 Reduction Ratio	3.7	5.2	14	19	27	51	71	100	139
减速电机输出扭矩 Torque For Gearbox(mN.m)	668	932	2268	3000	3000	6000	6000	6000	6000
减速电机总高度 Total Length(L1+L2+16)mm	75		82.2			89.1			
减速电机总重量 Total Weight(g)	319		359			399			
减速级数 Reduction Stage	1		2			3			
减速器长度 (L2) Gearbox Length(L2) mm	27.0		34.2			41.1			
背隙 (无负载时) Backlash At No-load	≤1°		≤1.2°			≤1.5°			
效率 Efficiency	90%		81%			73%			

减速电机性能参数 (35HS5401) / Geared Stepper Motor Specifications

减速比 Reduction Ratio	3.7	5.2	14	19	27	51	71	100	139
减速电机输出扭矩 Torque For Gearbox(mN.m)	835	1166	2835	3000	3000	6000	6000	6000	6000
减速电机总高度 Total Length(L1+L2+16)mm	85.5		92.7			99.6			
减速电机总重量 Total Weight(g)	419		459			499			
减速级数 Reduction Stage	1		2			3			
减速器长度 (L2) Gearbox Length(L2) mm	27.0		34.2			41.1			
背隙 (无负载时) Backlash At No-load	≤1°		≤1.2°			≤1.5°			
效率 Efficiency	90%		81%			73%			

尺寸图 /Dimensions



42 一体式步进驱动器 (RS485)

42 Integrated Stepper Motor Driver (RS485)

UMIR42

产品概述 / Product Description

UMIR42 一体式 485 总线型开环步进驱动器是最新推出的带串口调试功能的数字式混合步进伺服驱动器，集成了 MODBUS-RTU 标准协议规范，供电、IO 输入输出以及通讯接口采用 PH2.0-10P 针座，用户可通过上位机调试软件设置细分、电流、速度、工作模式等多种参数，极大地丰富了产品的实用功能，能够满足大多数场合的应用需要。

UMIR42 integrated 485 bus open-loop stepper driver is the latest digital hybrid stepper motor driver with serial port debugging function. It integrates MODBUS-RTU standard protocol specifications. The power supply interface, IO input and output ports and communication interface use PH2.0-10P pin sockets. Users can set various parameters such as subdivision, current, speed, working mode, etc. through the controller software, which greatly enriches the practical functions of the product and can meet the application needs of most occasions.

产品特点 / Feature

- 新一代 32 位 DSP 技术，平稳性佳、兼容性强、性价比高
New generation of 32-bit DSP technology, with good stability, strong compatibility and high cost performance
- 支持速度模式、位置模式、多段位置模式 (保留) 及回原点模式
Support speed mode, position mode, multi-segment position mode (reserved) and return to origin mode
- 电流、锁机电流、细分、PI 等参数都可通过主站设置及查询
Current, lock current, subdivision, PI and other parameters can be set and queried through the master station.
- 采用 RS485 总线，带隔离，支持标准 MODBUS-RTU 协议
Use RS485 bus, with isolation, support standard MODBUS-RTU protocol
- 拨码 SW1-4 设置驱动器通讯地址，可支持 15 个设备，更多可通过主站设置
Dial code SW1-4 sets the driver communication address, which can support 15 devices, and more can be set through the master station
- 1 路光电隔离可编程输入接口，接收外部控制信号，实现驱动器使能，启停，限位等功能
1 optoelectronic isolation programmable input interface, receives external control signals, and meets driver enable, start and stop, limit and other functions
- 1 路光电隔离可编程输出接口，输出驱动器状态及控制信号，如报警、到位、回原点完成等功能
1 optoelectronic isolation programmable output interface, outputs driver status and control signals, such as alarm, in place, return to origin completion and other functions
- 内置微细分，低速平稳性极佳
Built-in micro-segmentation, good work for low-speed and stability
- 具有过流 (保留)、过压、欠压、缺相等报警保护功能
With overcurrent (reserved), overvoltage, undervoltage, lack of phase and other alarm protection functions
- 纯正弦电流矢量控制有效降低电机发热
Pure sinusoidal current vector control effectively reduces motor heating
- 直流供电，输入电压范围：DC12V~40V
DC power supply, input voltage range: DC12V~40V



应用领域 / Application

适合各种中小型自动化设备和仪器，例如：雕刻机、打标机、切割机、绘图仪、数控机床、自动装配设备等。在用户期望小噪声、高速度的设备应用中应用效果特佳。

Suitable for various small and medium-sized automation equipment and instruments, such as: engraving machine, marking machine, cutting machine, plotter, CNC machine tool, automatic assembly equipment, etc. The application effect is particularly good in the application of equipment where users expect low noise and high speed.

电气指标 /Specifications

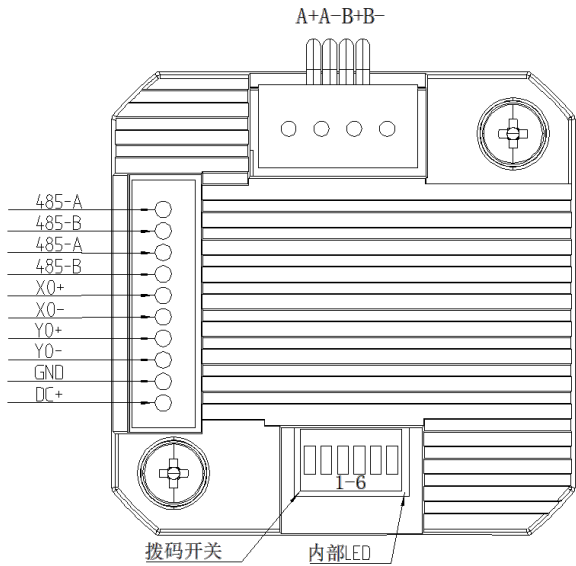
说明 Description	UMIR42			
	最小值 Minimum	典型值 Normally	最大值 Max	单位 unit
输出电流 Output Current	0	-	2000	mA
输入电源电压 Input Voltage	12	24	40	VDC
控制信号输入电流 Input Signal Current	7	10	16	mA
绝缘电阻 Insulation Resistance	50	-	-	MΩ

使用环境及参数 /Workinhg Environment

冷却方式 Cooling		自然冷却、风扇散热 Natural cooling, air cooling
使用环境 Working Environment	场合 Environment	不能放在其他发热的设备旁, 要避免粉尘、油雾、腐蚀性气体, 湿度太大及强振动场所, 禁止有可燃气体和导电灰尘 Do not work to other heating equipment. Avoid dust, oil mist, corrosive gases, places with excessive humidity and strong vibrations. No combustibile gases are allowed.body and conductive dust
	温度 Temperature	-25-55℃
	湿度 Humidity	40-90%RH
	振动 Vibration	10~55Hz/0.15mm
保存温度 Storage Temperature		-25℃ ~65℃

产品接口总体描述 /General Description of Product Interface

UMIR42 一体式 485 总线型开环步进驱动器的供电、IO 输入输出以及通讯接口采用 PH2.0-10P 的直针插座, 其共有 10 个引脚, 如下图所示
The power supply, IO input and output port and communication interface of UMIR42 integrated 485 bus open-loop stepper driver adopt PH2.0-10P straight pin socket, which has a total of 10 pins, as shown in the figure below.



UMIR42 接口示意图
UMIR42 Interface diagram

引脚 Pin	名称 Item	说明 Description
1	DC+	供电电源正极, 范围: DC12~40V Positive pole of power supply, range: DC12~40V
2	GND	供电电源负极 Negative pole of power supply
3	Y0-	光电隔离可编程输出接口 (最大驱动电流 50mA) Opto-isolated programmable output interface (maximum drive current 50mA)
4	Y0+	
5	X0-	DC 5V~24V 供电, 接外部输入信号负端, 可支持差分输入 DC 5V~24V power supply, connected to the negative end of the external input signal, can support differential input
6	X0+	DC 5V~24V 供电, 接外部输入信号正端, 可支持差分输入 DC 5V~24V power supply, connected to the positive end of the external input signal, can support differential input
7	485-B	485 通讯接口 B 端 485 communication interface B
8	485-A	485 通讯接口 A 端 485 communication interface A
9	485-B	485 通讯接口 B 端 485 communication interface B
10	485-A	485 通讯接口 A 端 485 communication interface A

拨码开关 /DIP Switch

名称 Item	功能 Function	说明 Description
拨码开关 SW1-SW6 DIP switch SW1-SW6	设置地址、波特率、终端电阻 选择 Set address, baud rate, terminal resistance selection	SW1-SW4: 驱动器地址设置 SW1-SW4: Driver address setting
		SW5: 波特率设置 SW5: Baud rate setting
		SW6: 120Ω 终端电阻有效位 SW6: 120Ω terminal resistance valid bit

驱动器地址设置 /Driver Address Setting

上位机使用 RS485 总线通讯, 使用拨码最多可以控制 15 台 485 驱动器, 驱动器通讯地址通过 SW1-SW4 拨码设置, off 代表 0, on 代表 1, 每一位拨码对应一个十六进制数据, 地址范围为 1-15, 如表所示。当驱动器地址设置大于 15 时, 需要使用主机发送更改地址指令进行设置, 但在设置前需将 SW1-SW4 拨码全设置为 off 状态, 设置完成并保存后, 需重新上电生效。

The controller with RS485 bus communication, can control up to 15 drivers by the dial switch. The driver communication address is set by the SW1-SW4 dial switch. Off represents 0, on represents 1, and each dial switch corresponds to a hexadecimal data. The address range is 1-15, as shown in the table. When the driver address is set to be greater than 15, the host needs to send a change address command to set it, but before setting, all SW1-SW4 dial switches need to be set to off. After the setting is completed and saved, it needs to be powered on again to take effect.

注意: 需确保每台驱动器通讯地址的唯一性, 否则会引起通讯冲突!

Ensure that the communication address of each drive is unique, otherwise communication conflicts will occur!

SW1	SW2	SW3	SW4	= 地址 (ID)
on=1 off=0	on=1 off=0	on=1 off=0	on=1 off=0	
x	x	x	x	
1	2	4	8	
off	off	off	off	1(可自定义) Customizable
on	off	off	off	1
off	on	off	off	2
on	on	off	off	3
off	off	on	off	4
on	off	on	off	5
off	on	on	off	6
on	on	on	off	7
off	off	off	on	8
on	off	off	on	9
off	on	off	on	10
on	on	off	on	11
off	off	on	on	12
on	off	on	on	13
off	on	on	on	14
on	on	on	on	15

通讯波特率设置 /Communication Baud Rate Setting

通讯波特率可通过 SW5 设置。若表中通讯波特率不能满足使用要求时，可以通过上位机自定义通讯波特率，前提是需将 SW5 拨至 off 状态，详见寄存器 0x0015 的描述。

Communication baud rate can be set through SW5. If the communication baud rate in the table cannot meet the use requirements, the communication baud rate can be customized through the host computer, provided that SW5 is turned off. For details, see the description of register 0x0015.

SW5	波特率 Baud rate
off	9600 (可自定义) Customizable
on	115200

终端电阻设置 /Terminal Resistance Setting

通用户可通过拨码 SW6 选择通讯末端是否并入 120Ω 终端电阻，根据使用场合确定。

The user can select whether to incorporate a 120Ω terminal resistor into the communication terminal through the dial code SW6, which is determined according to the use occasion.

SW6	120Ω 终端电阻 120Ω terminal resistor
off	无效 Invalid
on	有效 Valid

电流大小设置 /Current Setting

UMIR42 一体式 485 总线型开环步进驱动器，开环模式下默认电流。其不能通过拨码设置电流大小，若用户想自行调整电流的大小，可通过上位机软件设置。
UMIR42 integrated 485 bus open-loop stepper driver, the default current in open-loop mode. The current cannot be set by switch. If the user wants to adjust the current by himself, it can be set through the host computer software.

电流设置 (A) Current Setting	开环 Open loop	
	Peak	RMS
默认 Default	1.4	1.0

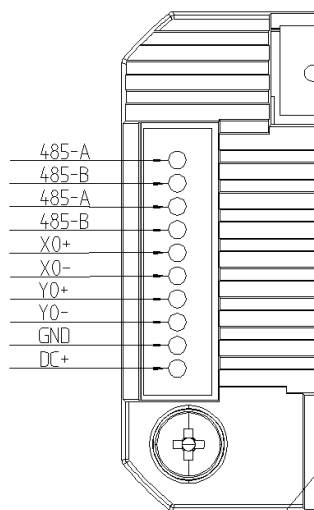
指示灯 /Indicator Light

UMIR42 一体式 485 总线型开环步进驱动器的指示灯为内缩式贴片 LED，其基本功能如下表所示。
The indicator light of UMIR42 integrated 485 bus open-loop stepper driver is a retracted SMD LED, and its basic functions are shown in the following table

名称 Item	功能 Function	说明 Descption
绿色 LED Green LED 红色 LED Red LED	电源、报警指示灯、保存参数功能指示、恢复出厂设置功能指示、拨码状态切换指示; Power supply, alarm indicator light, save parameter function Can indicate, restore factory settings function instructions, Dial status switching indication;	通电正常时绿灯常亮,红灯熄灭。保存参数、恢复出厂设置、拨码状态发生切换、设备发生异常时,红绿灯交替闪烁报警,其闪烁规律查看第六章; When the power is on normally, the green light is always on and the red light is off. When saving parameters, restoring factory settings, switching the dial status, or abnormal equipment occurs, the red and gre en lights flash alternately to alarm. For the flashing pattern, please refer to Chapter 6

RS485 通讯接口 /RS485 Communication Interface

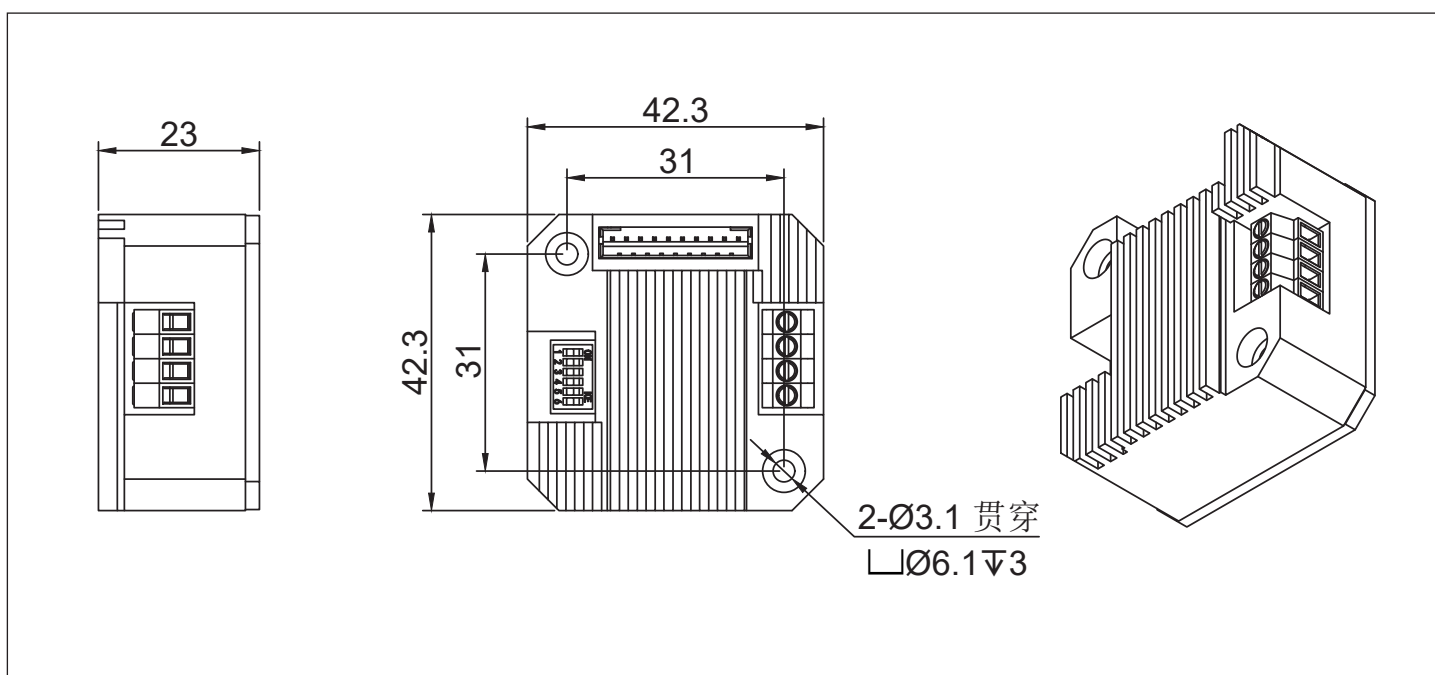
UMIR42 一体式 485 总线型开环步进驱动器的通讯接口采用 PH2.0-10P 的直针插座，如下图所示。
其接口共有 10 个引脚，从下至上对应引脚 1~10，其中引脚 7、8、9、10 用于 RS485 的半双工通讯，引脚 7、8 为一组，接 485 通讯的 B、A 端，引脚 9、10 为一组，驱动内部分别与引脚 7、8 级联，可用于连接至下一驱动设备，实际使用时建议采用链式方式一级一级在此接口处串接下去，引脚定义如下表所示。
The communication interface of UMIR42 integrated 485 bus open-loop stepper driver adopts PH2.0-10P straight pin socket, as shown in the figure below.
The interface has 10 pins in total, corresponding to pins 1 to 10 from top to bottom, of which pins 7,8,9,10 are used for half-duplex communication of RS485. Pins 7 and 8 are a group, connected to the A and B ends of 485 communication, and pins 9 and 10 are a group. They are cascaded with pins 7 and 8 inside the driver, respectively, and can be used to connect to the next driver device. Other pins have other functions. The pin definitions are shown in the following table.



UMIR42 一体式 485 总线型开环步进驱动器接口示意图
UMIR42 integrated 485 bus open-loop stepper driver interface diagram

引脚 Pin	定义 Definition
DC+	供电电源正端 power supply positive terminal
GND	供电电源 GND 端 power supply GND terminal
X0+、X0-	输入 IO 口 Input IO port
Y0+、Y0-	输出 IO 口 Output IO port
485-B	RS485 通讯端口 B 端 485 communication interface B
485-A	RS485 通讯端口 A 端 485 communication interface A

尺寸图 /Dimensions



42 高精密方形行星减速一体式步进电机 (RS485)

42 Square Flange Planetary Geared Stepper Motor with Integrated Driver (RS485)
(Backlash≤ 15 arcmin)



技术参数 / Technical Data

Model No.	额定电压 Rated Voltage (V)	每相电流 Current /Phase (A)	每相电阻 Resistance /Phase (Ω)	每相电感 Inductance /Phase (mH)	保持转矩 Holding Torque (mN.m)	引出线数 #of Leads	转动惯量 Rotor Inertia (g-cm ²)	重量 Weight (kg)	机身长度 (L1) Length(L1) (mm)	适配减速比 Max. Gear Ratio
42HSC1409	2.93	1.33	2.2	3.5	270	4	30	0.22	34	≤ 1: 100
42HSC4409	2.5	1.5	1.65	3.3	380	4	40	0.3	40	≤ 1: 100

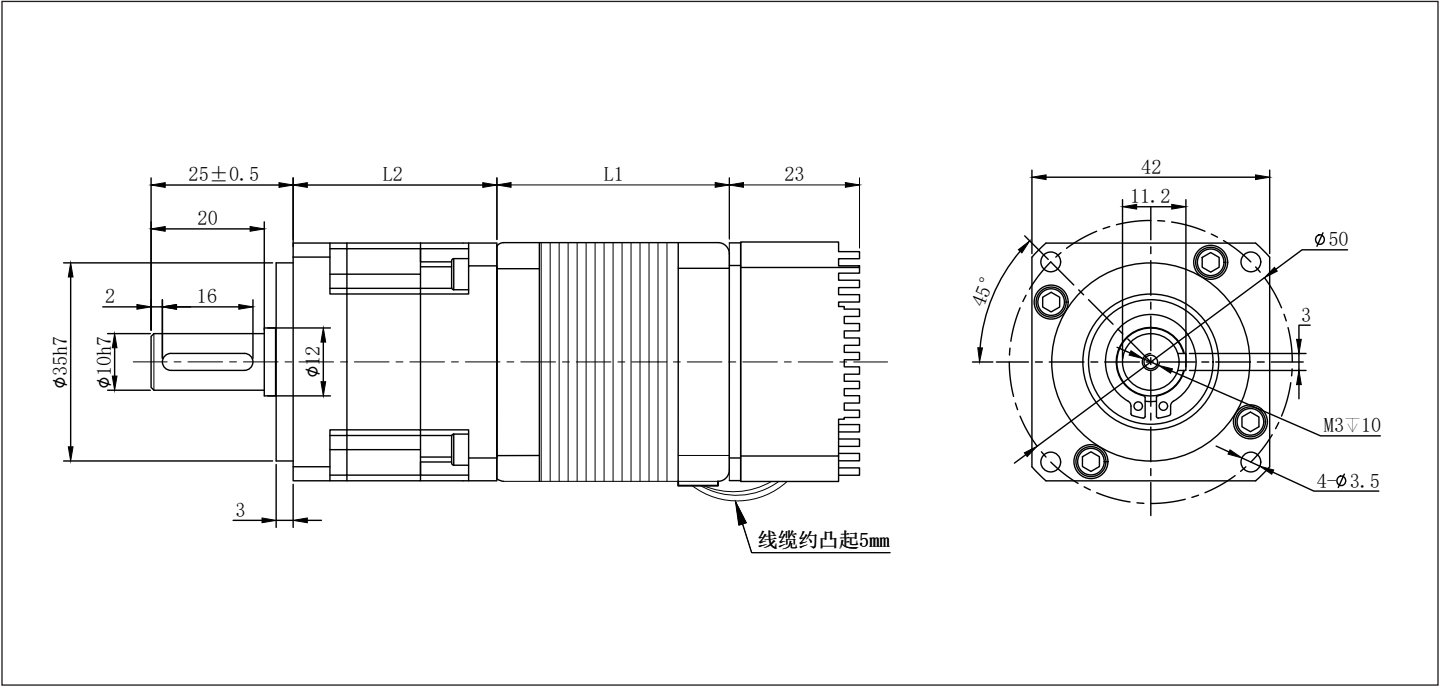
减速电机性能参数 (42HSC1409) /Geared Stepper Motor Specifications

减速比 Reduction Ratio	4	5	7	10	16	20	25	28	35	40	50	70	100
减速电机输出扭矩 Torque For Gearbox(mN.m)	1036	1296	1814	2592	4060	5076	6345	7106	8883	10000	10000	10000	10000
减速电机总高度 Total Length(L1+L2+23)		92							103				
减速电机总重量 Total Weight(g)		507							607				
减速级数 Reduction Stage		1							2				
减速器长度 (L2) Gearbox Length(L2) mm		35.0							46.0				
背隙 (无负载时) Backlash At No-load		≤15'							≤20'				
效率 Efficiency		96%							94%				

减速电机性能参数 (42HSC4409) /Geared Stepper Motor Specifications

减速比 Reduction Ratio	4	5	7	10	16	20	25	28	35	40	50	70	100
减速电机输出扭矩 Torque For Gearbox(mN.m)	1459	1824	2553	3648	5715	7144	8930	10000	10000	10000	10000	10000	10000
减速电机总高度 Total Length(L1+L2+23)		98							109				
减速电机总重量 Total Weight(g)		587							687				
减速级数 Reduction Stage		1							2				
减速器长度 (L2) Gearbox Length(L2) mm		35.0							46.0				
背隙 (无负载时) Backlash At No-load		≤15'							≤20'				
效率 Efficiency		96%							94%				

尺寸图 /Dimensions



42 高精密圆形行星减速一体式步进电机 (RS485)

42 Round Flange Planetary Geared Stepper Motor with Integrated Driver(RS485)
(Backlash≤ 15 arcmin)



技术参数 / Technical Data

Model No.	额定电压 Rated Voltage (V)	每相电流 Current /Phase (A)	每相电阻 Resistance /Phase (Ω)	每相电感 Inductance /Phase (mH)	保持转矩 Holding Torque (mN.m)	引出线数 #of Leads	转动惯量 Rotor Inertia (g·cm ²)	重量 Weight (kg)	机身长度 (L1) Length(L1) (mm)	适配减速比 Max. Gear Ratio
42HSC1409	2.93	1.33	2.2	3.5	270	4	30	0.22	34	≤ 1: 100
42HSC4409	2.5	1.5	1.65	3.3	380	4	40	0.3	40	≤ 1: 100

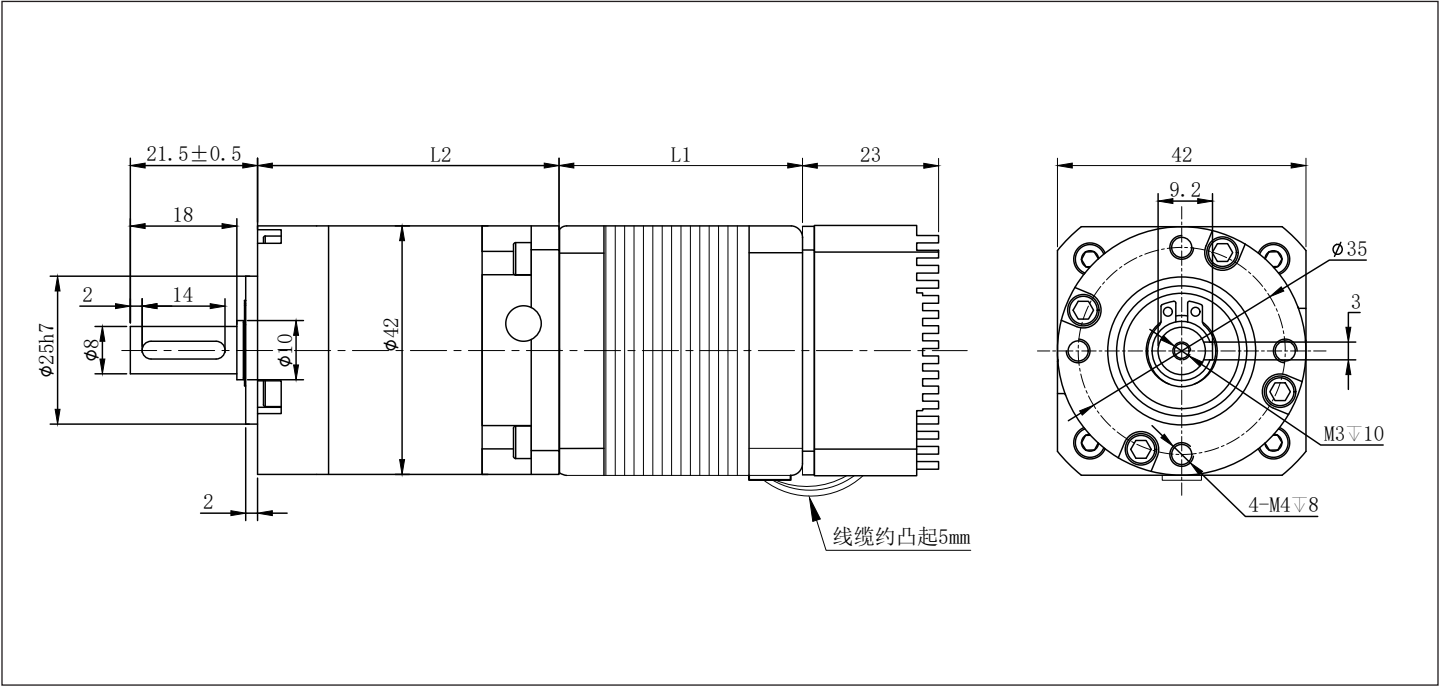
减速电机性能参数 (42HSC1409) /Geared Stepper Motor Specifications

减速比 Reduction Ratio	3	4	5	7	10	12	15	16	20	25	28	35	40	50	70	100
减速电机输出扭矩 Torque For Gearbox(mN.m)	777	1036	1296	1814	2592	3045	3807	4060	5076	6345	7106	8883	10000	10000	10000	10000
减速电机总高度 Total Length(L1+L2+23)	97					108										
减速电机总重量 Total Weight(g)	507					607										
减速级数 Reduction Stage	1					2										
减速器长度 (L2) Gearbox Length(L2) mm	40.0					51.0										
背隙 (无负载时) Backlash At No-load	≤15'					≤20'										
效率 Efficiency	96%					94%										

减速电机性能参数 (42HSC4409) /Geared Stepper Motor Specifications

减速比 Reduction Ratio	3	4	5	7	10	12	15	16	20	25	28	35	40	50	70	100
减速电机输出扭矩 Torque For Gearbox(mN.m)	1094	1459	1824	2553	3648	4286	5358	5715	7144	8930	10000	10000	10000	10000	10000	10000
减速电机总高度 Total Length(L1+L2+23)	103					114										
减速电机总重量 Total Weight(g)	587					687										
减速级数 Reduction Stage	1					2										
减速器长度 (L2) Gearbox Length(L2) mm	40.0					51.0										
背隙 (无负载时) Backlash At No-load	≤15'					≤20'										
效率 Efficiency	96%					94%										

尺寸图 /Dimensions



42 精密行星减速一体式步进电机 (RS485)

42 Planetary Geared Stepper Motor with Integrated Driver (RS485)
(Backlash≤ 30 arcmin)



技术参数 / Technical Data

Model No.	额定电压 Rated Voltage (V)	每相电流 Current /Phase (A)	每相电阻 Resistance /Phase (Ω)	每相电感 Inductance /Phase (mH)	保持转矩 Holding Torque (mN.m)	引出线数 #of Leads	转动惯量 Rotor Inertia (g·cm ²)	重量 Weight (kg)	机身长度 (L1) Length(L1) (mm)	适配减速比 Max. Gear Ratio
42HSC1409	2.93	1.33	2.2	3.5	270	4	30	0.22	34	≤ 1: 100
42HSC4409	2.5	1.5	1.65	3.3	380	4	40	0.3	40	≤ 1: 100
42HSC6413	3	1.5	2	3.5	520	4	68	0.4	48	≤ 1: 100

减速电机性能参数 (42HSC1409) / Geared Stepper Motor Specifications

减速比 Reduction Ratio	4	5	10	20	25	50	100
减速电机输出扭矩 Torque For Gearbox(mN.m)	972	1215	2430	4320	5400	10000	5000
减速电机总高度 Total Length(L1+L2+23)mm		97				108	
减速电机总重量 Total Weight(g)		507				607	
减速级数 Reduction Stage		1				2	
减速器长度 (L2) Gearbox Length(L2) mm		40.0				51.0	
背隙 (无负载时) Backlash At No-load		≤30'				≤45'	
效率 Efficiency		90%				80%	

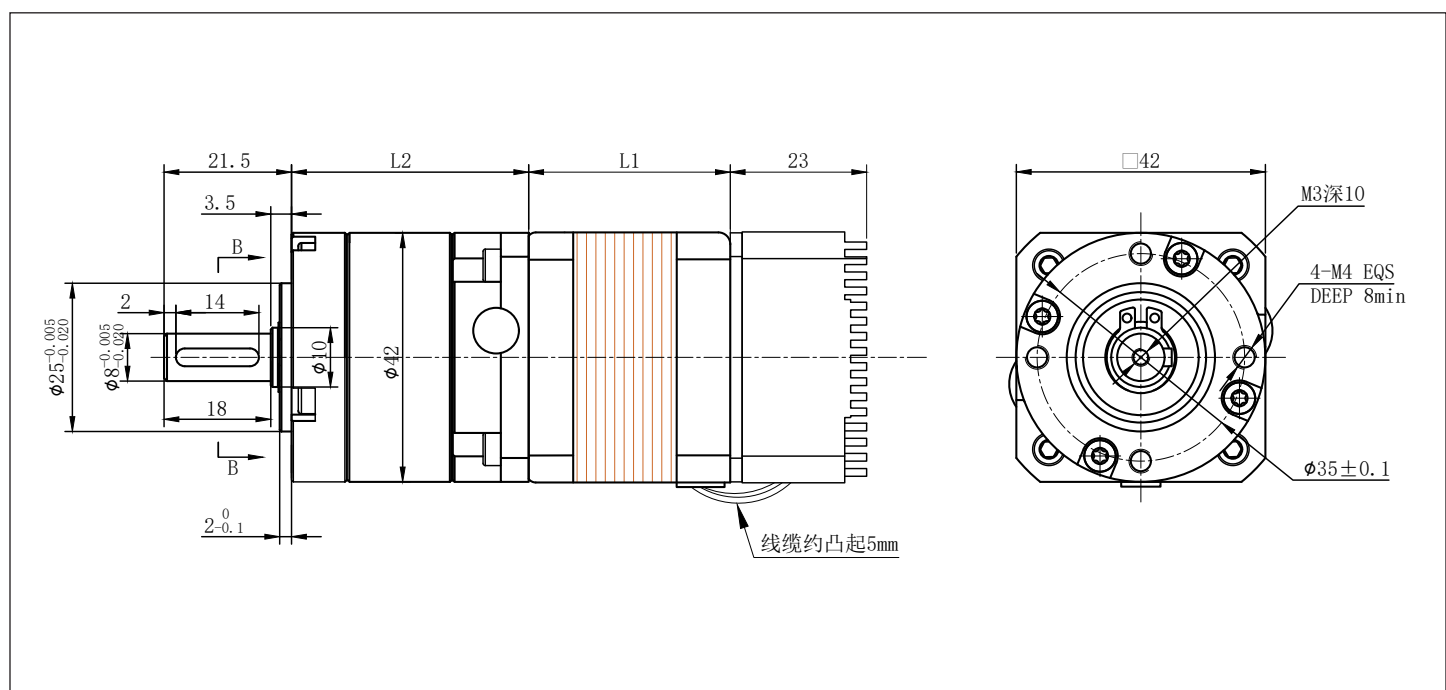
减速电机性能参数 (42HSC4409) / Geared Stepper Motor Specifications

减速比 Reduction Ratio	4	5	10	20	25	50	100
减速电机输出扭矩 Torque For Gearbox(mN.m)	1368	1710	3420	6080	7600	10000	5000
减速电机总高度 Total Length(L1+L2+23)mm		103				114	
减速电机总重量 Total Weight(g)		587				687	
减速级数 Reduction Stage		1				2	
减速器长度 (L2) Gearbox Length(L2) mm		40.0				51.0	
背隙 (无负载时) Backlash At No-load		≤30'				≤45'	
效率 Efficiency		90%				80%	

减速电机性能参数 (42HSC6413) / Geared Stepper Motor Specifications

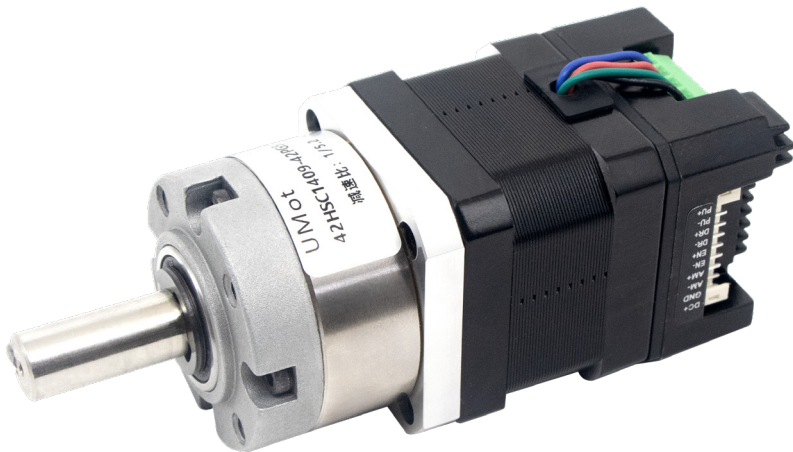
减速比 Reduction Ratio	4	5	10	20	25	50	100
减速电机输出扭矩 Torque For Gearbox(mN.m)	1872	2340	4680	8320	10000	10000	5000
减速电机总高度 Total Length(L1+L2+23)mm		111			122		
减速电机总重量 Total Weight(g)		687			787		
减速级数 Reduction Stage		1			2		
减速器长度 (L2) Gearbox Length(L2) mm		40.0			51.0		
背隙 (无负载时) Backlash At No-load		≤30'			≤45'		
效率 Efficiency		90%			80%		

尺寸图 / Dimensions



42 传动行星减速一体式步进电机 (RS485)

42 Planetary Geared Stepper Motor with Integrated Driver (RS485)
(Backlash≤ 1.8°)



技术参数 / Technical Data

Model No.	额定电压 Rated Voltage (V)	每相电流 Current /Phase (A)	每相电阻 Resistance /Phase (Ω)	每相电感 Inductance /Phase (mH)	保持转矩 Holding Torque (mN.m)	引出线数 #of Leads	转动惯量 Rotor Inertia (g-cm ²)	重量 Weight (kg)	机身长度 (L1) Length(L1) (mm)	适配减速比 Max. Gear Ratio
42HSC1409	2.93	1.33	2.2	3.5	270	4	30	0.22	34	≤ 1: 369
42HSC4409	2.5	1.5	1.65	3.3	380	4	40	0.3	40	≤ 1: 369

减速电机性能参数 (42HSC1409) /Geared Stepper Motor Specifications

减速比 Reduction Ratio	3.7	5.2	14	19	27	51	71	100	139	189	264	369
减速电机输出扭矩 Torque For Gearbox(mN.m)	902	1259	3062	4155	5000	10000	10000	10000	10000	10000	10000	10000
减速电机总高度 Total Length(L1+L2+23)mm	88.5			99.1				109.5			119.9	
减速电机总重量 Total Weight(g)	467			547				627			693	
减速级数 Reduction Stage	1			2				3			4	
减速器长度 (L2) Gearbox Length(L2) mm	31.5			42.1				52.5			62.9	
背隙 (无负载时) Backlash At No-load	≤1°			≤1.2°				≤1.5°			≤1.8°	
效率 Efficiency	90%			81%				73%			66%	

减速电机性能参数 (42HSC4409) /Geared Stepper Motor Specifications

减速比 Reduction Ratio	3.7	5.2	14	19	27	51	71	100	139	189	264	369
减速电机输出扭矩 Torque For Gearbox(mN.m)	1269	1772	4309	5000	5000	10000	10000	10000	10000	10000	10000	10000
减速电机总高度 Total Length(L1+L2+23)mm	94.5			105.1				115.5			125.9	
减速电机总重量 Total Weight(g)	547			627				707			797	
减速级数 Reduction Stage	1			2				3			4	
减速器长度 (L2) Gearbox Length(L2) mm	31.5			42.1				52.5			62.9	
背隙 (无负载时) Backlash At No-load	≤1°			≤1.2°				≤1.5°			≤1.8°	
效率 Efficiency	90%			81%				73%			66%	

[illegible]

57 一体式步进驱动器 (RS485)

57 Integrated Stepper Motor Driver (RS485)

UMIR57

产品概述 / Product Description

UMIR57 一体式 485 总线型开环步进驱动器是最新推出的带串口调试功能的数字式混合步进伺服驱动器，集成了 MODBUS-RTU 标准协议规范，供电接口采用 XH2.54-2P 针座，IO 输入输出以及通讯接口采用 PHB2.0-2x6P 针座，用户可通过上位机调试软件设置细分、电流、速度、工作模式等多种参数，极大地丰富了产品的实用功能，能够满足大多数场合的应用需要。

UMIR57 integrated 485 bus open-loop stepper driver is the latest digital hybrid stepper driver with serial port debugging function. It integrates MODBUS-RTU standard protocol specifications. The power supply interface adopt XH2.54-2P straight pin socket, IO input and output ports and communication interface use PHB2.0-2x6P pin sockets. Users can set various parameters such as subdivision, current, speed, working mode, etc. through the controller software, which greatly enriches the practical functions of the product and can meet the application needs of most occasions.

产品特点 / Feature

- 新一代 32 位 DSP 技术，平稳性佳、兼容性强、性价比高
New generation of 32-bit DSP technology, with good stability, strong compatibility and high cost performance
- 支持速度模式、位置模式、多段位置 / 速度模式、JOG+、JOG- 及回原点模式
Support speed mode, position mode, multi-segment position/speed mode, JOG+, JOG- and return to origin mode.
- 电流、锁机电流、细分、PI 等参数都可通过主站设置及查询
Current, lock current, subdivision, PI and other parameters can be set and queried through the master station.
- 采用 RS485 总线，带隔离，支持标准 MODBUS-RTU 协议
Use RS485 bus, with isolation, support standard MODBUS-RTU protocol
- 拨码 SW1-4 设置驱动器通讯地址，可支持 15 个设备，更多可通过主站设置
Dial code SW1-4 sets the driver communication address, which can support 15 devices, and more can be set through the master station
- 3 路光电隔离可编程输入接口，接收外部控制信号，实现驱动器使能，启停，限位等功能
3 optoelectronic isolation programmable input interface, receives external control signals, and meets driver enable, start and stop, limit and other functions
- 1 路光电隔离可编程输出接口，输出驱动器状态及控制信号，如报警、到位、回原点完成等功能
1 optoelectronic isolation programmable output interface, outputs driver status and control signals, such as alarm, in place, return to origin completion and other functions
- 内置微细分，低速平稳性极佳
Built-in micro-segmentation, good work for low-speed and stability
- 具有过流（保留）、过压、欠压、缺相等报警保护功能
With overcurrent (reserved), overvoltage, undervoltage, lack of phase and other alarm protection functions
- 纯正弦电流矢量控制有效降低电机发热
Pure sinusoidal current vector control effectively reduces motor heating
- 直流供电，输入电压范围：DC12V~50V
DC power supply, input voltage range: DC12V~50V



应用领域 / Application

适合各种中小型自动化设备和仪器，例如：雕刻机、打标机、切割机、绘图仪、数控机床、自动装配设备等。在用户期望小噪声、高速度的设备应用中应用效果特佳。

Suitable for various small and medium-sized automation equipment and instruments, such as: engraving machine, marking machine, cutting machine, plotter, CNC machine tool, automatic assembly equipment, etc. The application effect is particularly good in the application of equipment where users expect low noise and high speed.

电气指标 / Specifications

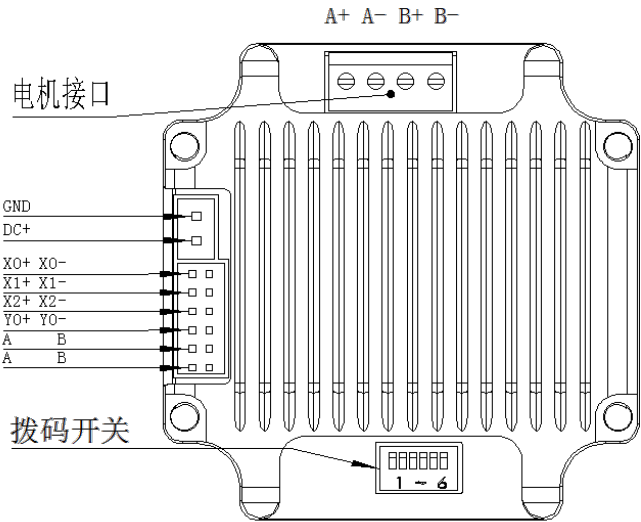
说明 Description	UMIR57			
	最小值 Minimum	典型值 Normally	最大值 Max	单位 unit
输出电流 Output Current	0	-	6000	mA
输入电源电压 Input Voltage	12	24	50	VDC
控制信号输入电流 Input Signal Current	7	10	16	mA
绝缘电阻 Insulation Resistance	50	-	-	MΩ

使用环境及参数 / Working Environment

冷却方式 Cooling		自然冷却、风扇散热 Natural cooling, air cooling
使用环境 Working Environment	场合 Environment	不能放在其他发热的设备旁, 要避免粉尘、油雾、腐蚀性气体, 湿度太大及强振动场所, 禁止有可燃气体和导电灰尘 Do not work to other heating equipment. Avoid dust, oil mist, corrosive gases, places with excessive humidity and strong vibrations. No combustibile gases are allowed.body and conductive dust
	温度 Temperature	-25-55℃
	湿度 Humidity	40-90%RH
	振动 Vibration	10~55Hz/0.15mm
保存温度 Storage Temperature		-25℃ ~65℃

产品接口总体描述 / General Description of Product Interface

UMIR57 一体式 485 总线型开环步进驱动器的供电接口采用 XH2.54-2P 直针插座, IO 输入输出口以及通讯接口采用 PHB2.0-2x6P 直针插座, 如下图所示
The power supply interface adopt XH2.54-2P straight pin socket, IO input and output port and communication interface of UMIR57 integrated 485 bus open-loop stepper driver adopt PHB2.0-2x6P straight pin socket, as shown in the figure below.



UMIR57 接口示意图
UMIR57 Interface diagram

名称 Item	说明 Description
GND	供电电源负极 Negative pole of power supply
DC+	供电电源正极, 范围: DC12~50V Positive pole of power supply, range: DC12~50V
X0+ X0-	DC 5V~24V 供电, 接外部输入信号负端, 可支持差分输入 DC 5V~24V power supply, connected to the negative end of the external input signal, can support differential input
X1+ X1-	DC 5V~24V 供电, 接外部输入信号正端, 可支持差分输入 DC 5V~24V power supply, connected to the positive end of the external input signal, can support differential input
X2+ X2-	DC 5V~24V 供电, 接外部输入信号正端, 可支持差分输入 DC 5V~24V power supply, connected to the positive end of the external input signal, can support differential input
Y0+ Y0-	光电隔离可编程输出接口 (最大驱动电流 50mA) Opto-isolated programmable output interface (maximum drive current 50mA)
A B	485 通讯接口 A B 端 485 communication interface A and B
A B	连接至下一驱动的 485 通讯接口 A B 端 Connect to the 485 communication interface A B end of the next drive

拨码开关 /DIP Switch

名称 Item	功能 Function	说明 Description
拨码开关 SW1-SW6 DIP switch SW1-SW6	设置地址、波特率、终端电阻 选择 Set address, baud rate, terminal resistance selection	SW1-SW4: 驱动器地址设置 SW1-SW4: Driver address setting
		SW5: 波特率设置 SW5: Baud rate setting
		SW6: 120Ω 终端电阻有效位 SW6: 120Ω terminal resistance valid bit

驱动器地址设置 /Driver Address Setting

上位机使用 RS485 总线通讯, 使用拨码最多可以控制 15 台 485 驱动器, 驱动器通讯地址通过 SW1-SW4 拨码设置, off 代表 0, on 代表 1, 每一位拨码对应一个十六进制数据, 地址范围为 1-15, 如表所示。当驱动器地址设置大于 15 时, 需要使用主机发送更改地址指令进行设置, 但在设置前需将 SW1-SW4 拨码全设置为 off 状态, 设置完成并保存后, 需重新上电生效。

The controller with RS485 bus communication, can control up to 15 drivers by the dial switch. The driver communication address is set by the SW1-SW4 dial switch. Off represents 0, on represents 1, and each dial switch corresponds to a hexadecimal data. The address range is 1-15, as shown in the table. When the driver address is set to be greater than 15, the host needs to send a change address command to set it, but before setting, all SW1-SW4 dial switches need to be set to off. After the setting is completed and saved, it needs to be powered on again to take effect.

注意: 需确保每台驱动器通讯地址的唯一性, 否则会引起通讯冲突!
Ensure that the communication address of each drive is unique, otherwise communication conflicts will occur.

SW1	SW2	SW3	SW4	= 地址 (ID)
on=1 off=0 x 1	on=1 off=0 x 2	on=1 off=0 x 4	on=1 off=0 x 8	
off	off	off	off	
on	off	off	off	1 (可自定义) Customizable
off	on	off	off	2
on	on	off	off	3
off	off	on	off	4
on	off	on	off	5
off	on	on	off	6
on	on	on	off	7
off	off	off	on	8
on	off	off	on	9
off	on	off	on	10
on	on	off	on	11
off	off	on	on	12
on	off	on	on	13
off	on	on	on	14
on	on	on	on	15

通讯波特率设置 /Communication Baud Rate Setting

通讯波特率可通过 SW5 设置。若表中通讯波特率不能满足使用要求时，可以通过上位机自定义通讯波特率，前提是需将 SW5 拨至 off 状态，详见寄存器 0x0015 的描述。

Communication baud rate can be set through SW5. If the communication baud rate in the table cannot meet the use requirements, the communication baud rate can be customized through the host computer, provided that SW5 is turned off. For details, see the description of register 0x0015.

SW5	波特率 Baud rate
off	9600 (可自定义) Customizable
on	115200

终端电阻设置 /Terminal Resistance Setting

通用户可通过拨码 SW6 选择通讯末端是否并入 120Ω 终端电阻，根据使用场合确定。

The user can select whether to incorporate a 120Ω terminal resistor into the communication terminal through the dial code SW6, which is determined according to the use occasion.

SW6	120Ω 终端电阻 120Ω terminal resistor
off	无效 Invalid
on	有效 Valid

电流大小设置 /Current Setting

UMIR57 一体式 485 总线型开环步进驱动器，默认电流如下表所示。其不能通过拨码设置电流大小，若用户想自行调整电流的大小，可通过上位机软件设置。
UMIR57 integrated 485 bus open-loop stepper driver, the default current is shown in the following table. The current cannot be set by switches. If the user wants to adjust the current by himself, it can be set by the host computer software.

电流设置 (A) Current Setting	开环 Open loop	
	Peak(A)	RMS(A)
默认 Default	4.2	3.0

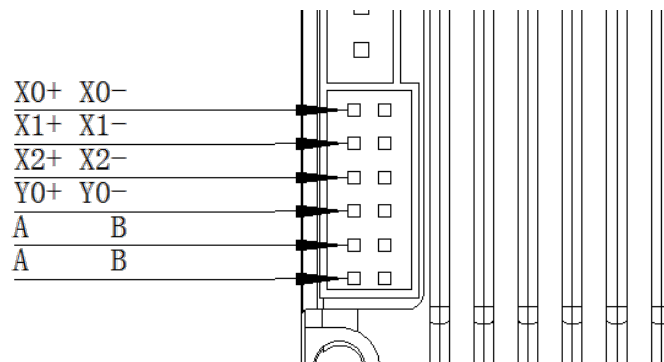
指示灯 /Indicator Light

UMIR57 一体式 485 总线型开环步进驱动器的指示灯为内缩式贴片 LED，其基本功能如下表所示。
The indicator light of UMIR57 integrated 485 bus open-loop stepper driver is a retracted SMD LED, and its basic functions are shown in the following table.

名称 Item	功能 Function	说明 Descption
绿色 LED Green LED 红色 LED Red LED	电源、报警指示灯、保存参数功能指示、恢复出厂设置功能指示、拨码状态切换指示； Power supply, alarm indicator light, save parameter function Can indicate, restore factory settings function instructions, Dial status switching indication;	通电正常时绿灯常亮,红灯熄灭。保存参数、恢复出厂设置、拨码状态发生切换、设备发生异常时,红绿灯交替闪烁报警,其闪烁规律查看第六章; When the power is on normally, the green light is always on and the red light is off. When saving parameters, restoring factory settings, switching the dial status, or abnormal equipment occurs, the red and green lights flash alternately to alarm. For the flashing pattern, please refer to Chapter 6

RS485 通讯接口 /RS485 Communication Interface

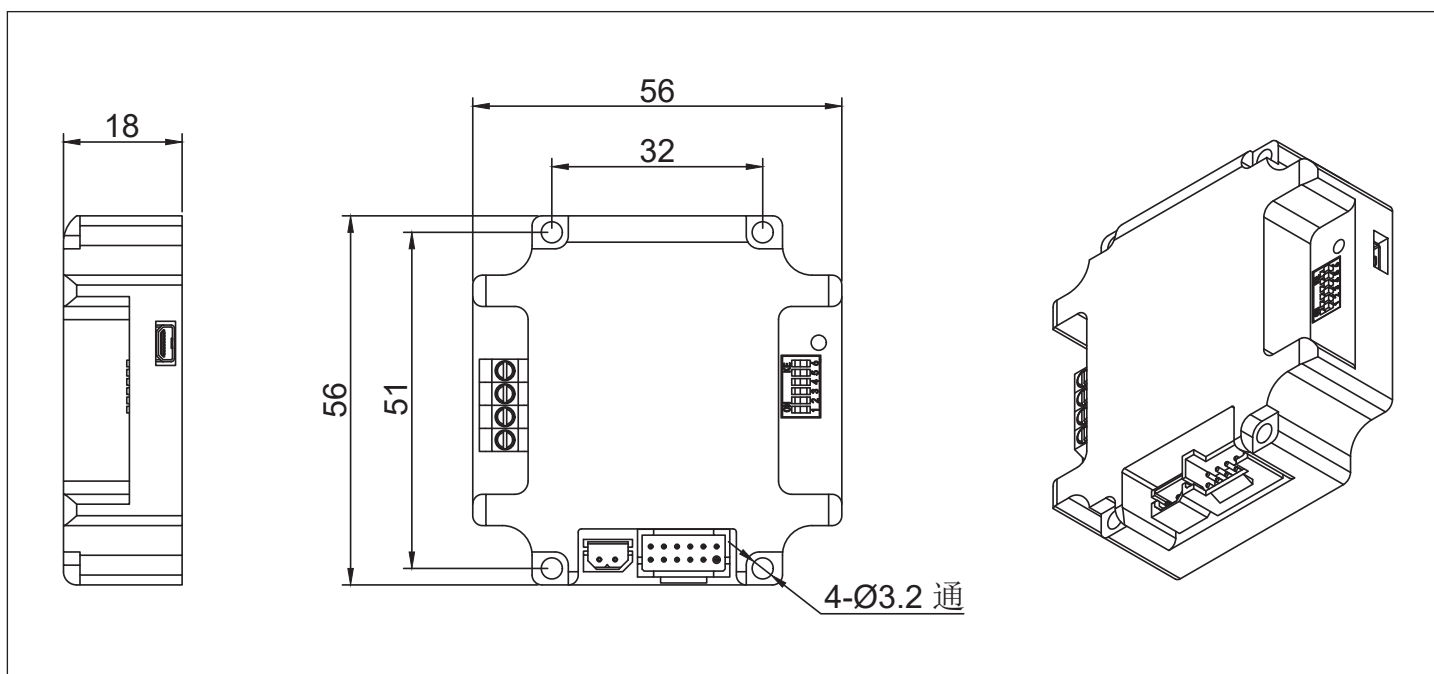
UMIR57 一体式 485 总线型开环步进驱动器的通讯接口采用 PH2.0*6P 的直针插座，如下图所示。
其接口共有 12 个引脚，从下至上对应引脚 1~12，其中引脚 9、10、11、12 用于 RS485 的半双工通讯，引脚 9、10 为一组，接 485 通讯的 A、B 端，引脚 11、12 为一组，驱动内部分别与引脚 9、10 级联，可用于连接至下一驱动设备，其他引脚为其他功能，引脚定义如下表所示。
The communication interface of UMIR57 integrated 485 bus open-loop stepper driver adopts PH2.0*6P straight pin socket, as shown in the figure below.
The interface has 12 pins in total, corresponding to pins 1 to 12 from top to bottom, of which pins 9, 10, 11, and 12 are used for half-duplex communication of RS485. Pins 9 and 10 are a group, connected to the A and B ends of 485 communication, and pins 11 and 12 are a group. They are cascaded with pins 9 and 10 inside the driver, respectively, and can be used to connect to the next driver device. Other pins have other functions. The pin definitions are shown in the following table.



UMIR57 一体式 485 总线型开环步进驱动器接口示意图
UMIR57 integrated 485 bus open-loop stepper driver interface diagram

引脚 Pin	定义 Definition
X0+、X0-、X1+、X1-、X2+、X2-、X0+	输入 IO 口 Input IO port
Y0+、Y0-	输出 IO 口 Output IO port
A B	485 通讯接口 A B 端 485 communication interface A and B
A B	连接至下一驱动的 485 通讯接口 A B 端 Connect to the 485 communication interface A B end of the next drive

尺寸图 /Dimensions



57 高精密行星减速一体式步进电机 (RS485)

57 Planetary Geared Stepper Motor with Integrated Driver (RS485)
(Backlash≤ 15 arcmin)



技术参数 / Technical Data

Model No.	额定电压 Rated Voltage (V)	每相电流 Current /Phase (A)	每相电阻 Resistance /Phase (Ω)	每相电感 Inductance /Phase (mH)	保持转矩 Holding Torque (mN.m)	引出线数 #of Leads	转动惯量 Rotor Inertia (g-cm ²)	重量 Weight (kg)	机身长度 (L1) Length(L1) (mm)	适配减速比 Max. Gear Ratio
57HS5417	1.7	2.0	0.85	2.5	950	4	200	0.64	55	≤ 1: 70

减速电机性能参数 (57HS5417) / Geared Stepper Motor Specifications

减速比 Reduction Ratio	4	5	7	10	16	20	25	28	35	40	50	70
减速电机输出扭矩 Torque For Gearbox(mN.m)	3648	4560	6384	9120	14288	17860	22325	25004	30000	25000	25000	20000
减速电机总高度 Total Length(L1+L2+18)mm		130						146				
减速电机总重量 Total Weight(g)		1410						1640				
减速级数 Reduction Stage		1						2				
减速器长度 (L2) Gearbox Length(L2) mm		57.0						73.0				
背隙 (无负载时) Backlash At No-load		≤15'						≤20'				
效率 Efficiency		96%						94%				

Technical drawing of a cable gland assembly, showing side and front views with dimensions.

Side View Dimensions:

- Overall length: 35 ± 0.5
- Distance from front face to start of main body: 31
- Distance from front face to start of main body (alternative dimension): 25
- Distance from front face to start of main body (alternative dimension): 3
- Distance from front face to start of main body (alternative dimension): 2.5
- Main body diameter: $\phi 58$
- Distance from front face to end of main body: L_2
- Distance from front face to end of main body (alternative dimension): L_1
- Distance from front face to end of main body (alternative dimension): 18
- Distance from front face to end of main body (alternative dimension): $\phi 40h7$
- Distance from front face to end of main body (alternative dimension): $\phi 14h7$

Front View Dimensions:

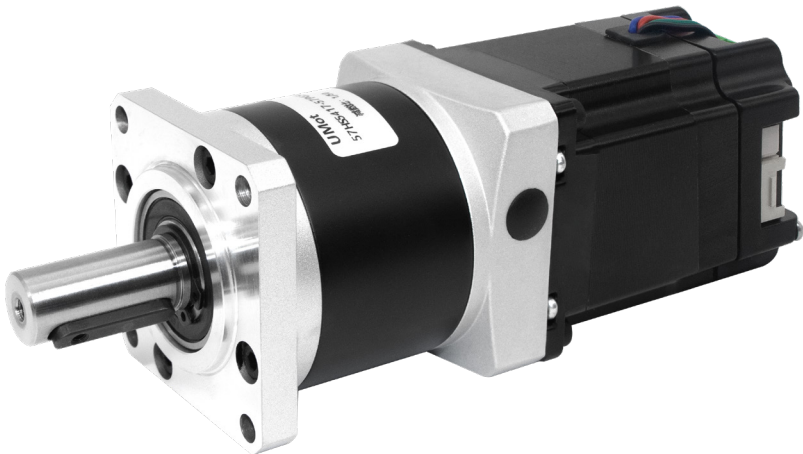
- Overall width: 60
- Distance from center to mounting hole: 16
- Distance from center to mounting hole (alternative dimension): 47.14
- Distance from center to mounting hole (alternative dimension): 5
- Mounting hole size: M4*12
- Mounting hole size (alternative dimension): 4- $\phi 5.5$ 贯穿

Notes:

- 线缆约凸起8mm (Cable protrudes approximately 8mm)

57 精密行星减速一体式步进电机 (RS485)

57 Planetary Geared Stepper Motor with Integrated Driver (RS485)
(Backlash≤ 30 arcmin)



技术参数 / Technical Data

Model No.	额定电压 Rated Voltage (V)	每相电流 Current /Phase (A)	每相电阻 Resistance /Phase (Ω)	每相电感 Inductance /Phase (mH)	保持转矩 Holding Torque (mN.m)	引出线数 #of Leads	转动惯量 Rotor Inertia (g·cm ²)	重量 Weight (kg)	机身长度 (L1) Length(L1) (mm)	适配减速比 Max. Gear Ratio
57HSC5417	1.7	2.0	0.85	2.5	950	4	200	0.64	55	≤ 1: 50
57HSC7407	2.64	4.0	0.66	2.3	2400	4	480	1.00	76	≤ 1: 50
57HSC11402	3.6	4.5	0.80	3.5	3600	4	680	1.70	113.5	≤ 1: 50

减速电机性能参数 (57HSC5417) / Geared Stepper Motor Specifications

减速比 Reduction Ratio	4	5	10	20	25	50
减速电机输出扭矩 Torque For Gearbox(mN.m)	3420	4275	8550	15200	19000	20000
减速电机总高度 Total Length(L1+L2+18)mm		128.5			141	
减速电机总重量 Total Weight(g)		1340			1490	
减速级数 Reduction Stage		1			2	
减速器长度 (L2) Gearbox Length(L2) mm		55.5			68.0	
背隙 (无负载时) Backlash At No-load		≤30'			≤45'	
效率 Efficiency		90%			80%	

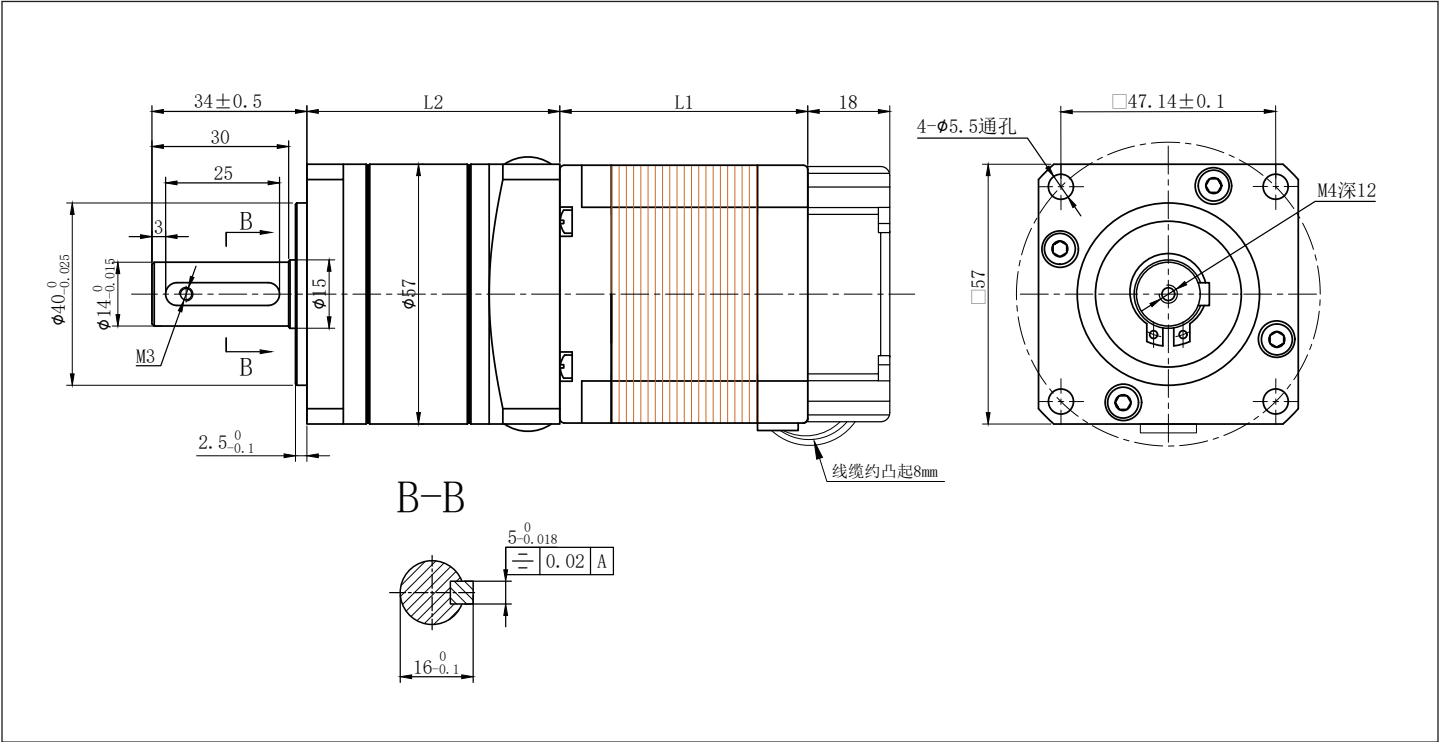
减速电机性能参数 (57HSC7407) / Geared Stepper Motor Specifications

减速比 Reduction Ratio	4	5	10	20	25	50
减速电机输出扭矩 Torque For Gearbox(mN.m)	8640	10800	10000	25000	25000	25000
减速电机总高度 Total Length(L1+L2+18)mm		149.5			162	
减速电机总重量 Total Weight(g)		1700			1850	
减速级数 Reduction Stage		1			2	
减速器长度 (L2) Gearbox Length(L2) mm		55.5			68.0	
背隙 (无负载时) Backlash At No-load		≤30'			≤45'	
效率 Efficiency		90%			80%	

减速电机性能参数 (57HSC11402) /Geared Stepper Motor Specifications

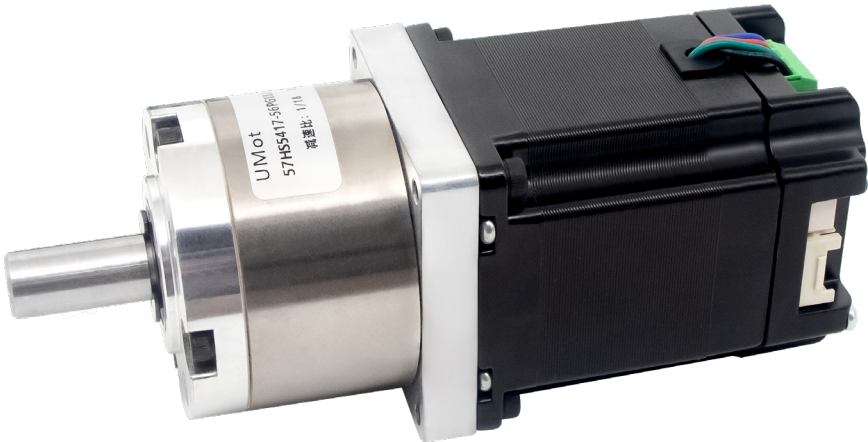
减速比 Reduction Ratio	4	5	10	20	25	50
减速电机输出扭矩 Torque For Gearbox(mN.m)	12960	16200	10000	25000	25000	25000
减速电机总高度 Total Length(L1+L2+18)mm		187			199.5	
减速电机总重量 Total Weight(g)		2400			2550	
减速级数 Reduction Stage		1			2	
减速器长度 (L2) Gearbox Length(L2) mm		55.5			68.0	
背隙 (无负载时) Backlash At No-load		≤30'			≤45'	
效率 Efficiency		90%			80%	

尺寸图 /Dimensions



57 传动行星减速一体式步进电机 (RS485)

57 Planetary Geared Stepper Motor with Integrated Driver (RS485)
(Backlash≤ 1.8°)



技术参数 / Technical Data

Model No.	额定电压 Rated Voltage (V)	每相电流 Current /Phase (A)	每相电阻 Resistance /Phase (Ω)	每相电感 Inductance /Phase (mH)	保持转矩 Holding Torque (mN.m)	引出线数 #of Leads	转动惯量 Rotor Inertia (g·cm ²)	重量 Weight (kg)	机身长度 (L1) Length(L1) (mm)	适配减速比 Max. Gear Ratio
57HS5417	1.7	2.0	0.85	2.5	950	4	200	0.64	55	≤ 1: 187

减速电机性能参数 (57HS5417) / Geared Stepper Motor Specifications

减速比 Reduction Ratio	3.6	4.3	13	15	18	23	47	55	65	77	96	121	153	187
减速电机输出扭矩 Torque For Gearbox(mN.m)	3078	3634	10004	11543	13851	15000	30000	30000	30000	30000	30000	30000	30000	30000
减速电机总高度 Total Length(L1+L2+18)mm	110.8			122.4					133.8				144.9	
减速电机总重量 Total Weight(g)	1150			1300					1450				1610	
减速级数 Reduction Stage	1			2					3				4	
减速器长度 (L2) Gearbox Length(L2) mm	37.8			49.4					60.8				71.9	
背隙 (无负载时) Backlash At No-load	≤1°			≤1.2°					≤1.5°				≤1.8°	
效率 Efficiency	90%			81%					73%				66%	

[illegible]

专
心
·
专
业
·
专
注



 微信搜一搜

 umot优摩特



+86 2386132606



www.umotmotor.cn



info@umottech.com



重庆市九龙坡区火炬大道101号2110号