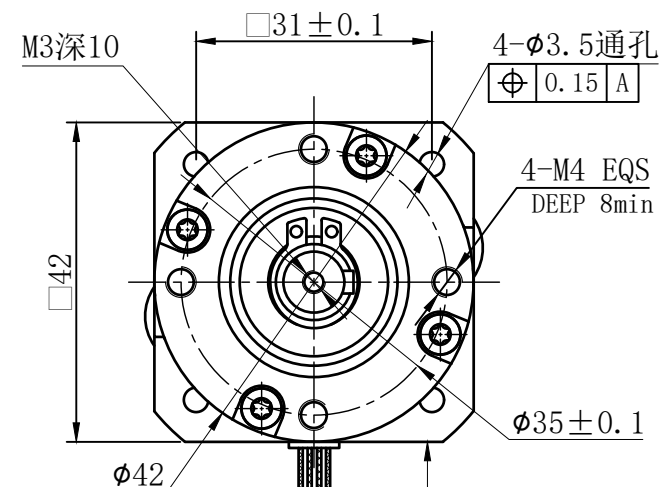
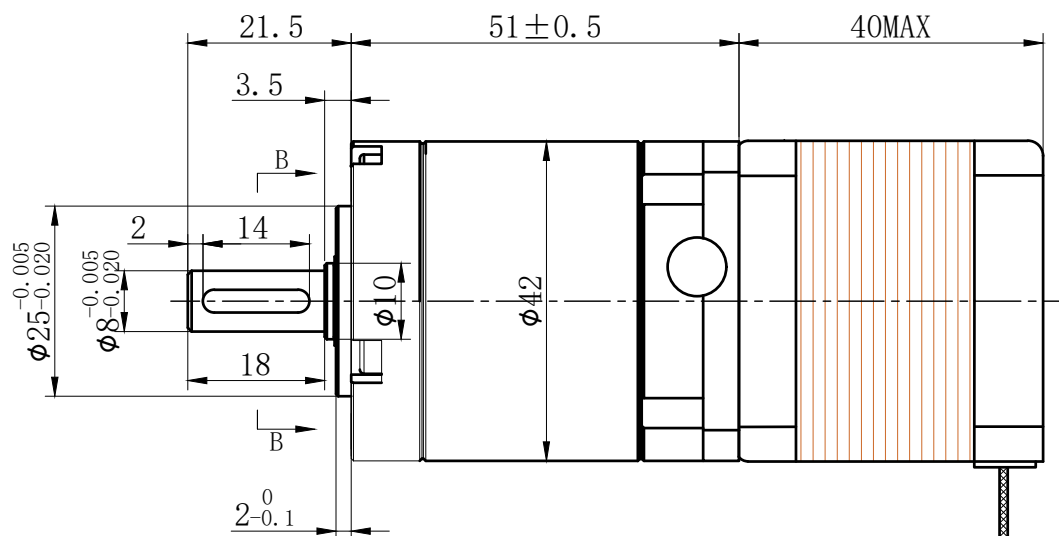


符合RoHS指令要求  
CONFORM TO RoHS DNSTROCTIONS

A

A



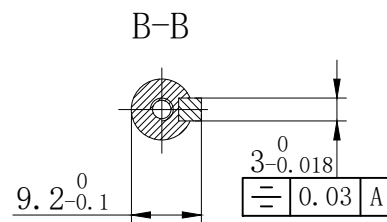
B

B

C

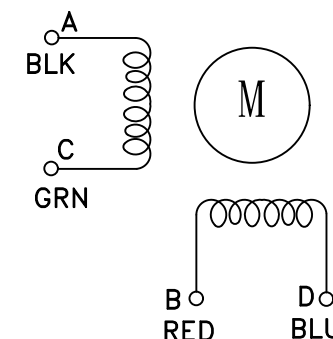
C

特性 <b>character</b>	规格 <b>specifications</b>
1. 相数 Number of phase	2
2. 步 距 角 Step Angle	1.8°
3. 额定电压 Rated Voltage	DC 2.5V
4. 额定电流 Rated current	DC 1.5A
5. 保持转矩 Holding Torque	≥ 380mN.m
6. 相电阻 Winding resistance	1.65±15% ohm(20℃)
7. 相电感 Winding inductaoce	3.3±20% mH (1kHz)
8. 转向 (轴伸向看) Direction of rotation	A-AB-B-CW
9. 转动惯量 Rotor Inertia	40 g.cm <sup>2</sup>
10. 电机重量 Weight	0.3Kg
11. 绝缘等级 Insulation class	B Class



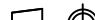
減速比: 50:1

电气原理图  
winding drawing



D

D

<div> <div>UMot</div> </div>		视图 view				<div> <div>重庆优摩特科技有限公司</div> <div>Chongqing UMot technology Co.Ltd.</div> </div>	
		比例 inverse proportion		1 : 1			
阳祥	李佳兴		2023 02/13	A0			
设计 INSPECTED	审核 CHECKED	批准 APPROVED	日期 Date	版本 Version	型号 Model	42HSC4409-42PG50PM-500	