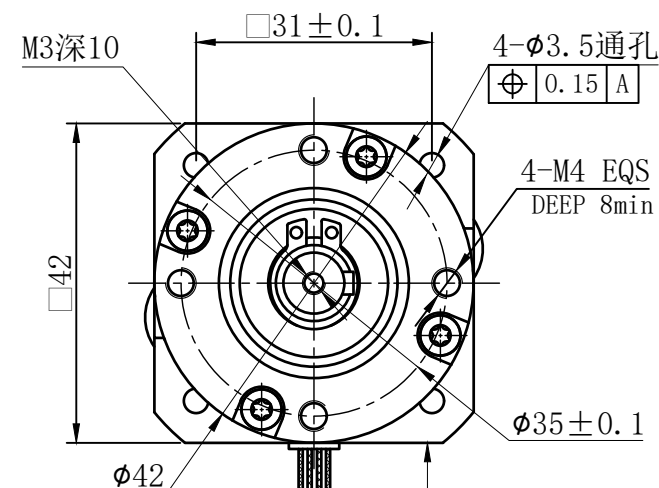
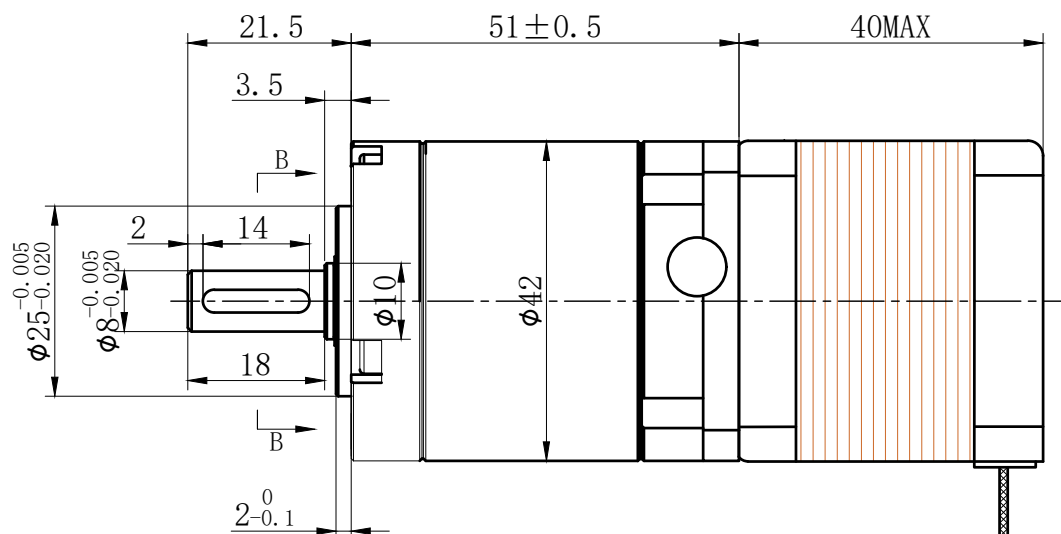


符合RoHS指令要求
CONFORM TO RoHS DNSTROCTIONS

A

A



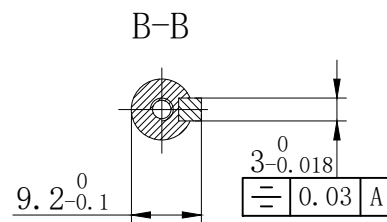
B

B

C

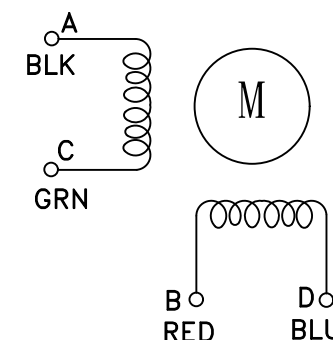
C

特性 character	规格 specifications
1. 相数 Number of phase	2
2. 步 距 角 Step Angle	1.8°
3. 额定电压 Rated Voltage	DC 2.5V
4. 额定电流 Rated current	DC 1.5A
5. 保持转矩 Holding Torque	≥ 380mN.m
6. 相电阻 Winding resistance	1.65±15% ohm(20℃)
7. 相电感 Winding inductaoce	3.3±20% mH (1kHz)
8. 转向 (轴伸向看) Direction of rotation	A-AB-B-CW
9. 转动惯量 Rotor Inertia	40 g.cm ²
10. 电机重量 Weight	0.3Kg
11. 绝缘等级 Insulation class	B Class



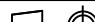
減速比: 20:1

电气原理图
winding drawing



D

D

<div> <div>UMot</div> </div>		<div> <div>视图</div> <div>view</div> </div>		<div>  </div>		<div> <div>重庆优摩特科技有限公司</div> <div>Chongqing UMot technology Co.Ltd.</div> </div>	
		<div> <div>比例</div> <div>inverse proportion</div> </div>		<div> <div>1 : 1</div> </div>			
<div>阳祥</div>	<div>李佳兴</div>		<div>2023</div> <div>02/13</div>	<div>A0</div>			
<div>设计</div> <div>INSPECTED</div>	<div>审核</div> <div>CHECKED</div>	<div>批准</div> <div>APPROVED</div>	<div>日期</div> <div>Date</div>	<div>版本</div> <div>Version</div>	<div>型号</div> <div>Model</div>	<div>42HSC4409-42PG20PM-500</div>	