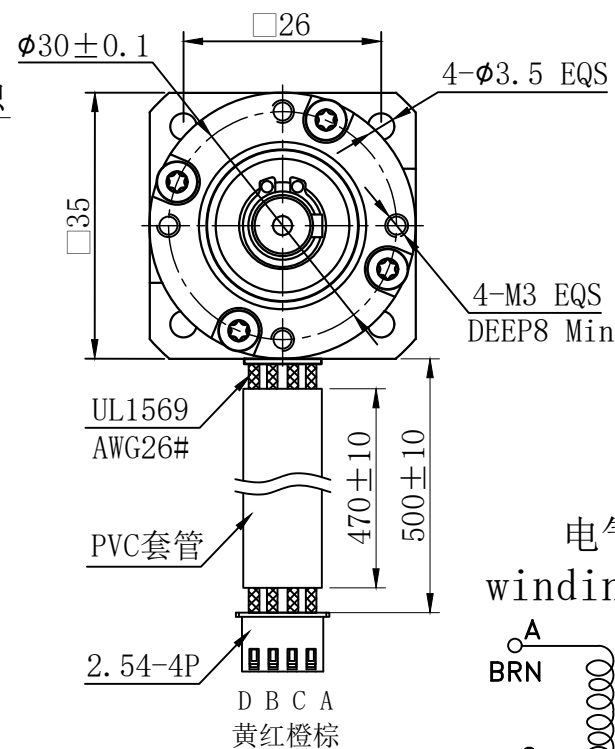
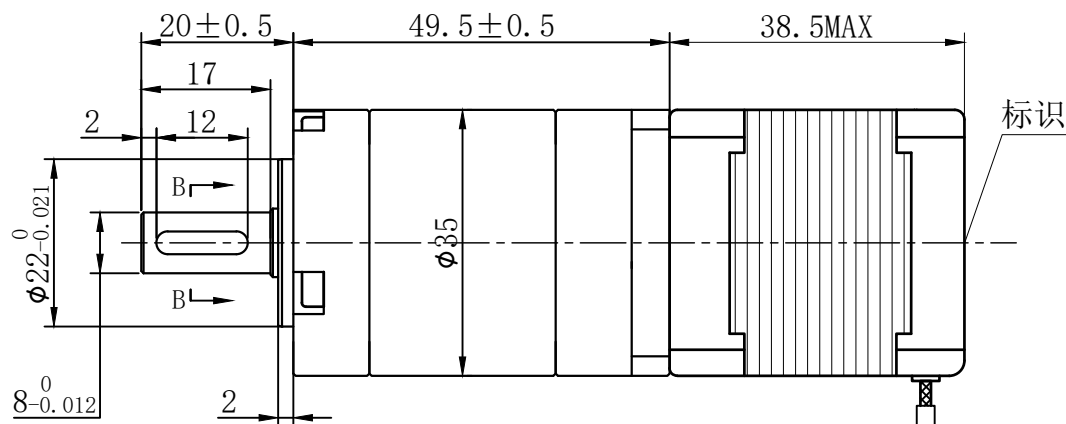


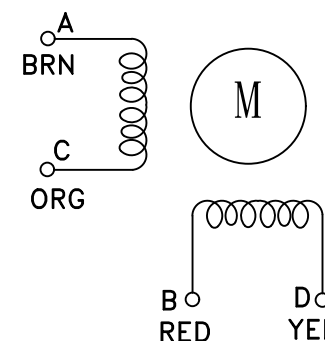
符合RoHS指令要求
CONFORM TO RoHS DNSTRUCTIONS

A

A

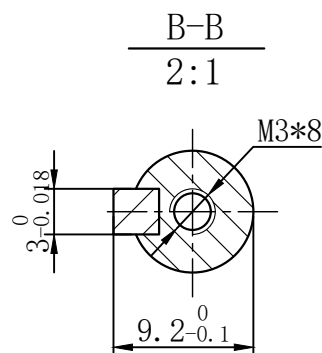


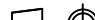
电气原理图
winding drawing



減速比: 35:1

特性 character	规格 specifications
1. 相数 Number of phase	2
2. 步 距 角 Step Angle	1.8°
3. 额定电压 Rated Voltage	DC 4.5V
4. 额定电流 Rated current	DC 1.0A
5. 保持转矩 Holding Torque	≥ 250mN.m
6. 相电阻 Winding resistance	4.5±15% ohm(20℃)
7. 相电感 Winding inductaoce	7±20% mH (1kHz)
8. 转向(轴伸向看) Direction of rotation	A-AB-B-CW
9. 转动惯量 Rotor Inertia	35 g.cm ²
10. 电机重量 Weight	0.25Kg
11. 绝缘等级 Insulation class	B Class



<div> <div>UMot</div> </div>		视图 view				<div> <div>重庆优摩特科技有限公司</div> <div>Chongqing UMot technology Co.Ltd.</div> </div>	
		比例 inverse proportion		1: 1			
阳祥	李佳兴		2023 05.10	A0			
设计 INSPECTED	审核 CHECKED	批准 APPROVED	日期 Date	版本 Version	型号 Model	35HSH5401-35PG35JM-500	

C

C

D

D