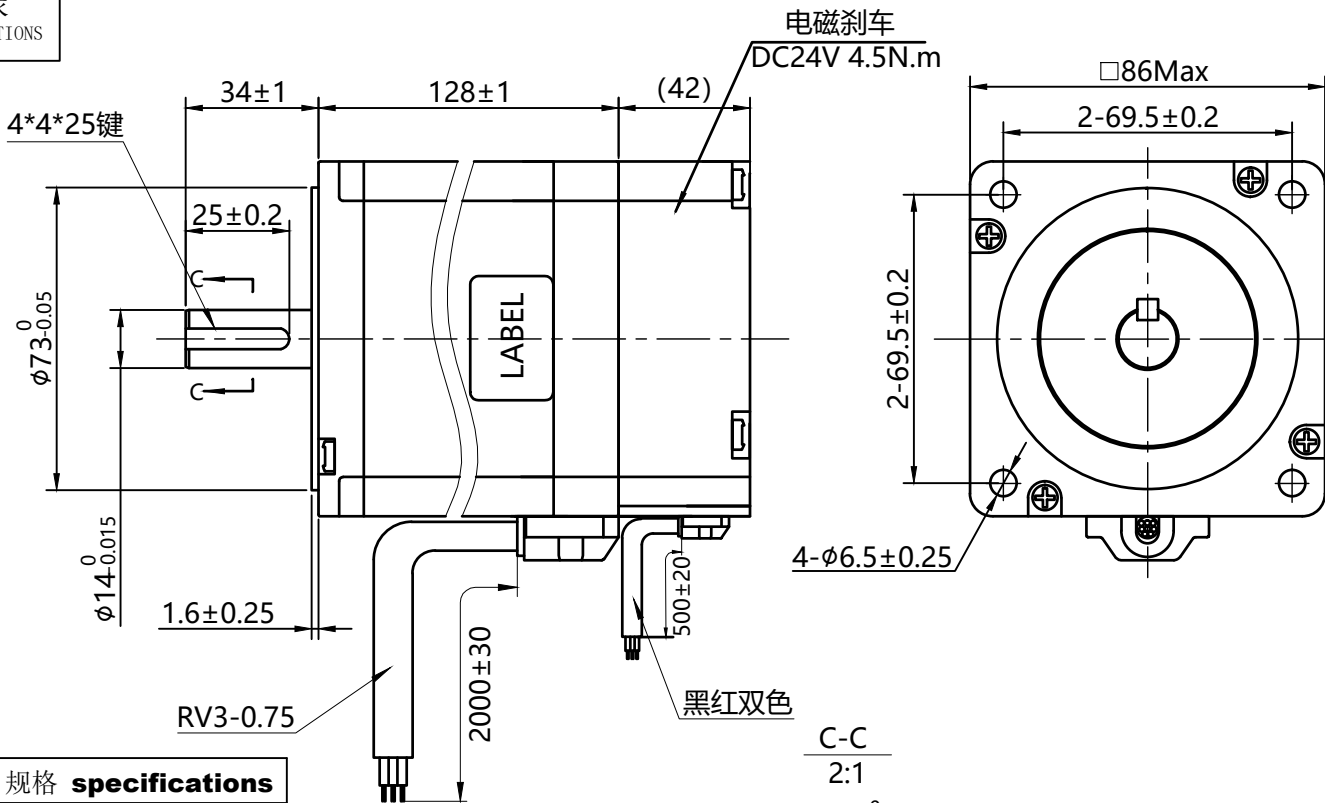
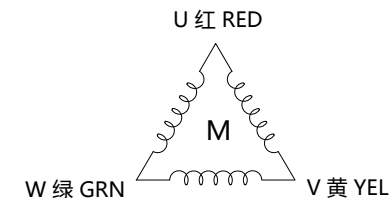


符合RoHS指令要求
CONFORM TO RoHS DNSTRUCTIONS



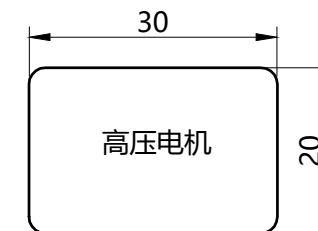
电气原理图
Wiring Diagram



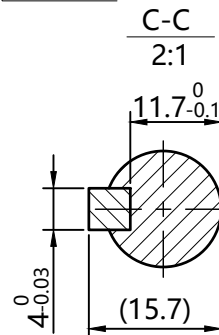
励磁顺序vs.旋转方向
Exciting Sequence vs.
Direction of Rotation

STEP	U	V	W	
1	+	-		
2		-	+	
3	-		+	
4	-	+		
5		+	-	
6	+		-	

从安装面看为顺时针方向
Clockwise view from mouting side

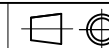


特性 character	规格 specifications
1. 相数 Number of phase	3
2. 步距角 Step Angle	1.2° ±5%
3. 额定电压 Rated Voltage	DC 7.44V
4. 额定电流 Rated current	DC 3.0A
5. 保持转矩 Holding Torque	≥ 7 N.M
6. 相电阻 Winding resistance	2.48±10% ohm(20°C)
7. 相电感 Winding inductaocce	13.8±20% mH (1kHz)
8. 转向 (轴伸向看) Directlon of rotation	A-AB-B-CW
9. 转动惯量 Rotor Inertia	3200 g.cm ²
10. 电机重量 Weight	5.0 Kg
11. 绝缘等级 Insulation class	B Class



UMot

视图
view



比例
inverse
proportion

1:1

重庆优摩特科技有限公司
Chongqing UMot technology Co.Ltd.

A0

标记
REV

修改内容
Description

日期
Date

设计
INSPECTED

审核
CHECKED

批准
APPROVED

日期
Date

版本
version

型号
Model

86HE5301-34J4-SC-500Y