

直线模组

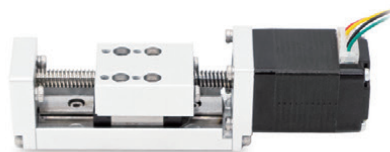
专心/专业/专注 选型手册

LINEAR MODULE SELECTION MANUAL

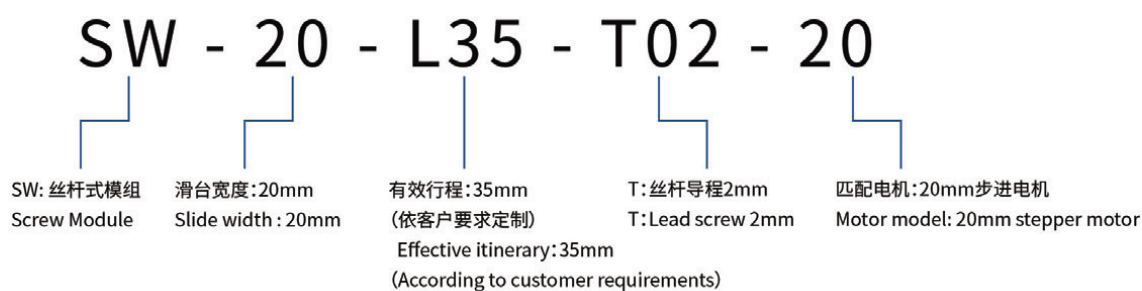
CHONGQING UMOT TECHNOLOGY CO.,LTD

重庆优摩特科技有限公司

SW20系列直线模组 SW20 series linear module



Naming rules 命名规则



Technical parameter 技术参数

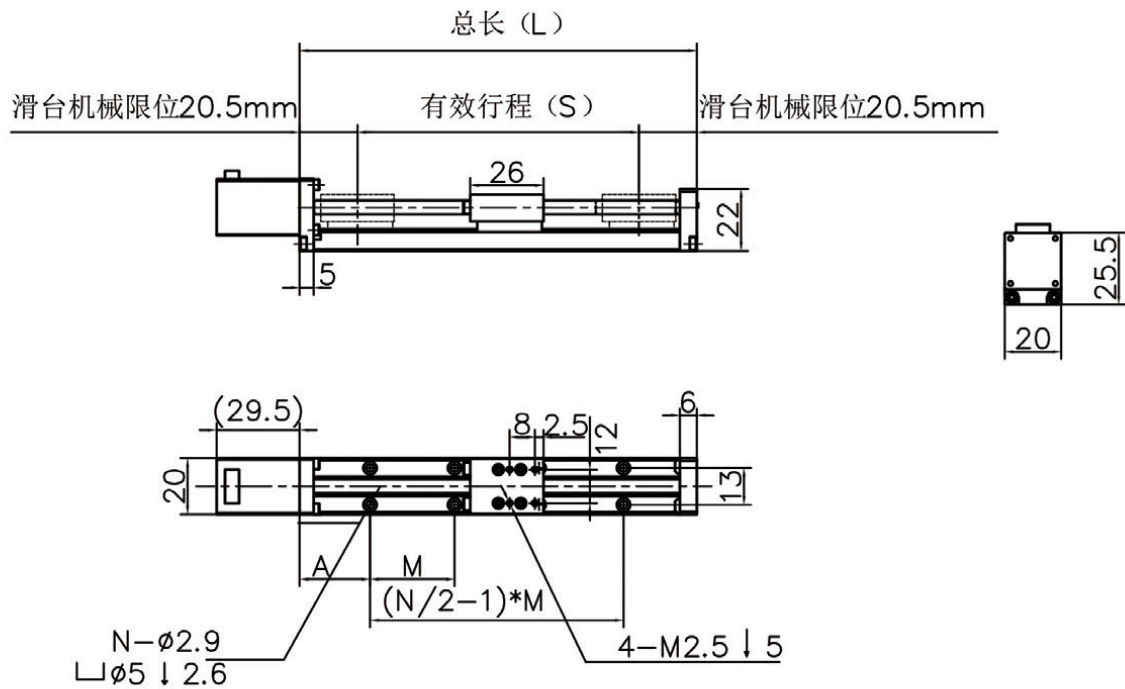
产品基础参数 Product basic parameters	电机型号(mm) motor model	20	
	T型丝杆直径 (mm) T type screw diameter	φ5	
	重复定位精度 (mm) Position Accuracy	±0.03	
	运行寿命 (小时) Operating life	10000	
	T型丝杆导程 (mm) Lead screw	2	4
	水平最大负载(kg) Max Horizontal Loadings	2	
	垂直最大负载(kg) Max Vertical Loading	0.5	
	空载满速度(mm/s) No-load full speed	20	40
	额定加速度(mm/s ²) Rated Acceleration	50	
	最大推力(N) Maximum thrust	12	8

Features 产品特点

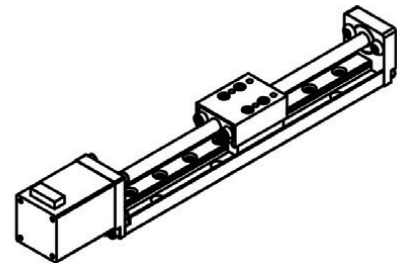
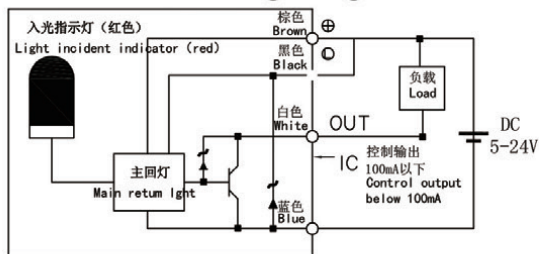
- ▶ 本体宽度20mm Body width 20mm
- ▶ 结构紧凑 compact
- ▶ 刚性好 good rigidity
- ▶ 低噪音 low noise
- ▶ 高精度 High precision

Dimensions 尺寸图

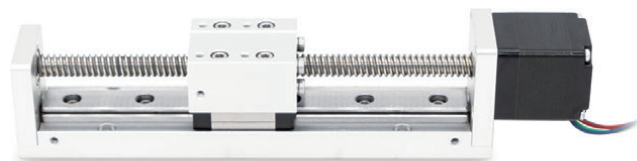
S	20	35	60	100
L	61	76	101	141
A	10	15	15	25
M	30	30	30	30
N	4	4	6	8
重量	0.4	0.55	0.8	1.2



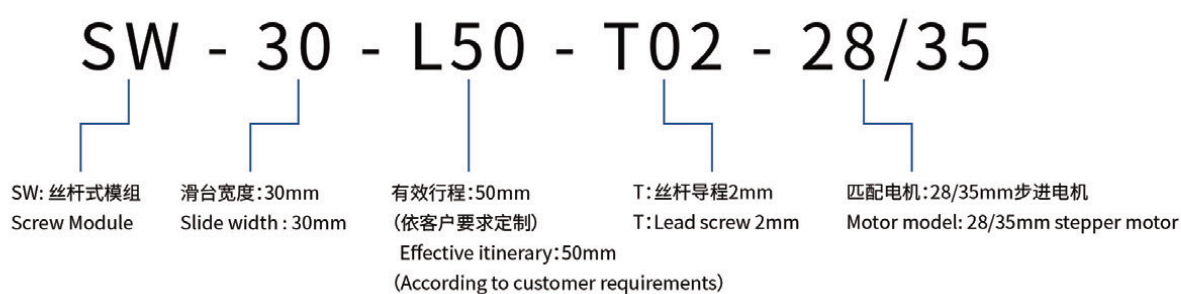
感应器接线图
Sensor wiring diagram



SW30系列直线模组 SW30 series linear module



Naming rules 命名规则



Technical parameter 技术参数

产品基础参数 Product basic parameters	电机型号(mm) motor model	28				35			
	T型丝杆直径 (mm) T type screw diameter	φ8				φ8			
	重复定位精度 (mm) Position Accuracy	±0.03				±0.03			
	运行寿命 (小时) Operating life	10000				10000			
	T型丝杆导程 (mm) Lead screw	2	4	8	12	2	4	8	12
	水平最大负载(kg) Max Horizontal Loadings	5				6			
	垂直最大负载(kg) Max Vertical Loading	1				2			
	空载满速度(mm/s) No-load full speed	30	60	120	180	30	60	120	180
	额定加速度(mm/s ²) Rated Acceleration	100				100			
	最大推力(N) Maximum thrust	37	22	17	16	60	46	28	22

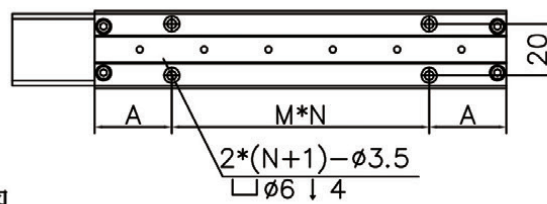
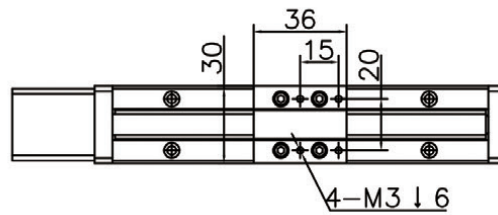
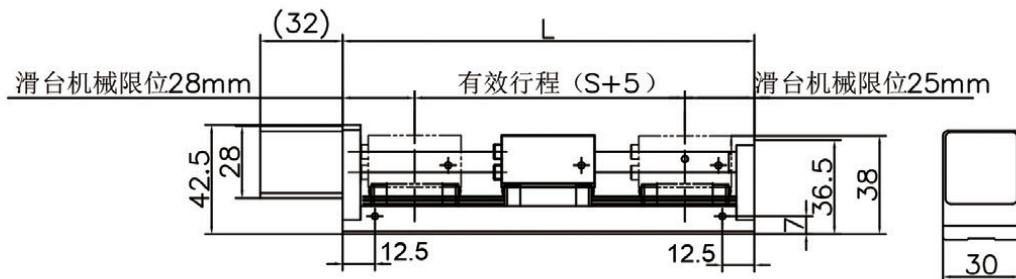
Features 产品特点

- ▶ 本体宽度30mm Body width 30mm
- ▶ 结构紧凑 compact
- ▶ 刚性好 good rigidity
- ▶ 低噪音 low noise
- ▶ 高精度 High precision

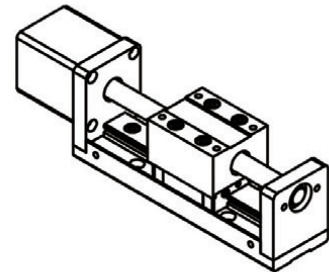
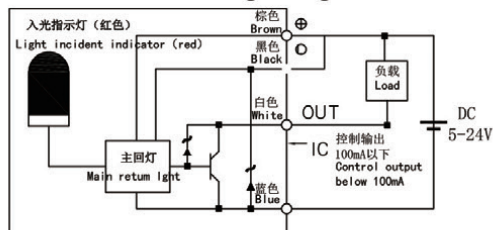
Dimensions 尺寸图

S	50	100	150	200	250	300	350	400
L	110	160	210	260	310	360	410	460
A	30	30	55	30	55	30	55	30
M	50	100	100	100	100	100	100	100
N	1	1	1	2	2	3	3	4

28mm电机尺寸图

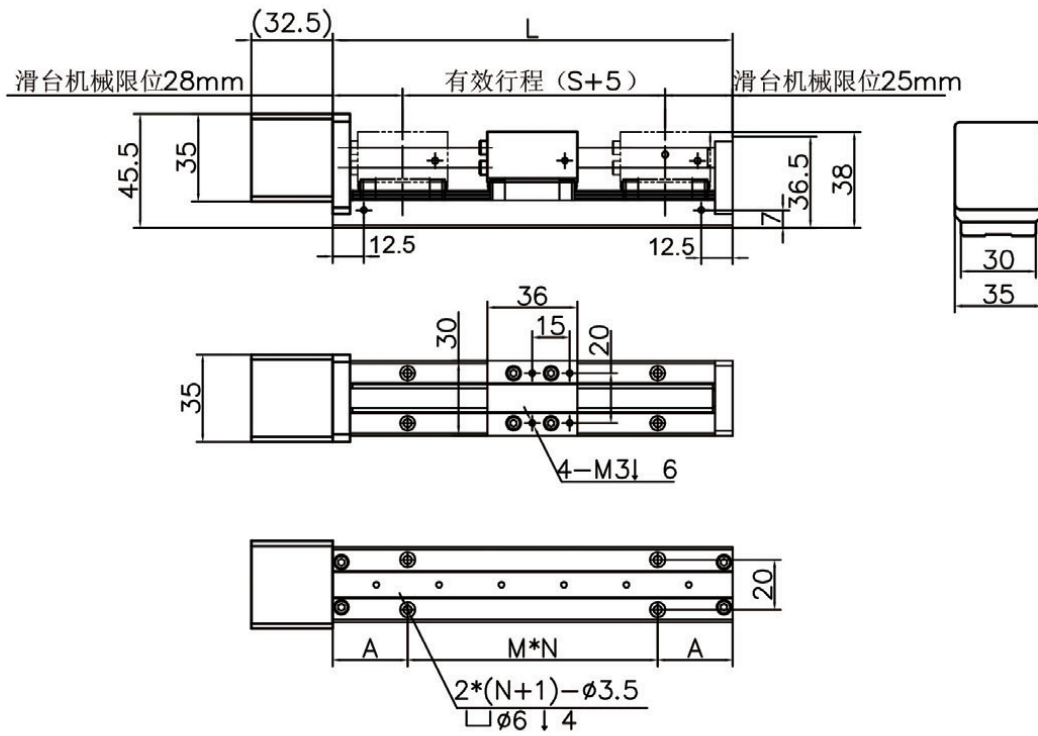


感应器接线图
Sensor wiring diagram

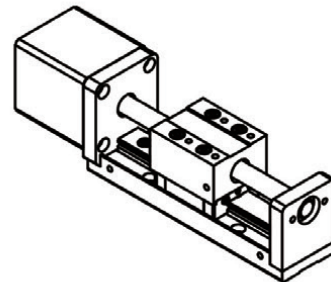
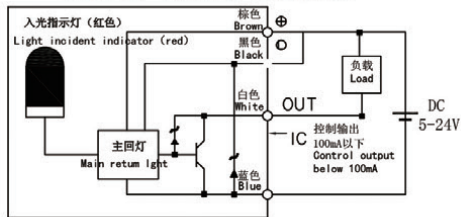


Dimensions 尺寸图

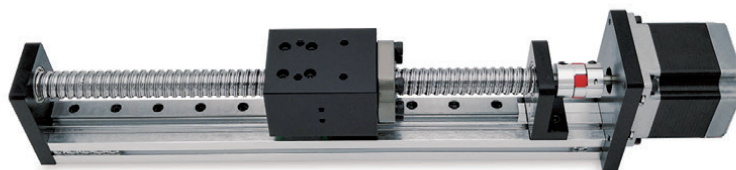
35mm电机尺寸图



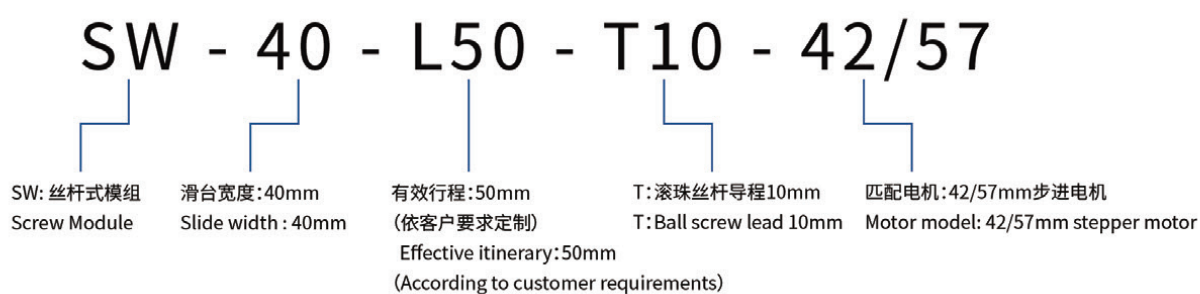
感应器接线图
Sensor wiring diagram



SW40系列直线模组 SW40 series linear module



Naming rules 命名规则



Technical parameter 技术参数

产品基础参数 Product basic parameters	电机型号(mm) motor model	42		57	
	滚珠丝杆直径 (mm) Ball screw diameter	φ12	φ16	φ12	φ16
	重复定位精度 (mm) Position Accuracy	±0.03		±0.03	
	运行寿命 (小时) Operating life	10000		10000	
	滚珠丝杆导程 (mm) Ball screw lead	5	10	5	10
	水平最大负载(kg) Max Horizontal Loadings	25	18	30	20
	垂直最大负载(kg) Max Vertical Loading	8	5	10	6
	空载满速度(mm/s) No-load full speed	75	150	75	150
	额定加速度(mm/s ²) Rated Acceleration	100		100	
	最大推力(N) Maximum thrust	268	134	376	188

Features 产品特点

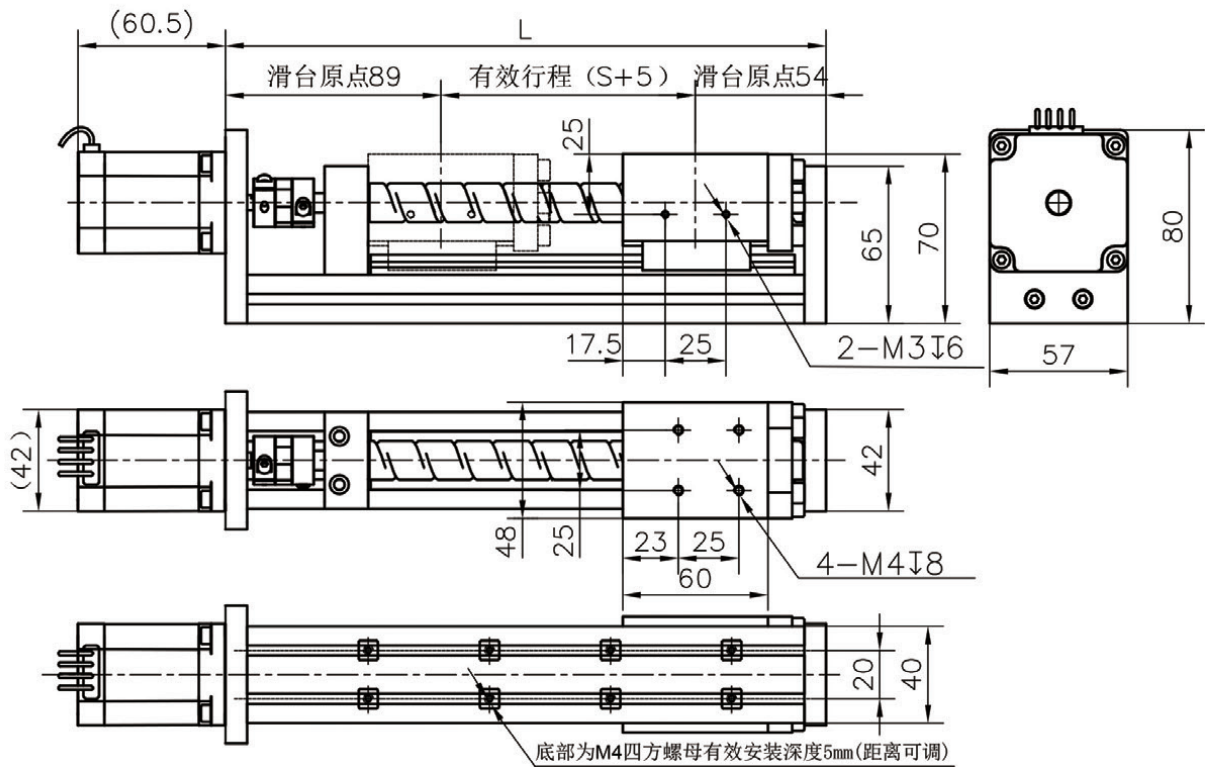
- ▶ 本体宽度40mm Body width 40mm
- ▶ 结构紧凑 Compact
- ▶ 刚性好 Good rigidity
- ▶ 低噪音 Low noise
- ▶ 高精度 High precision

Dimensions 尺寸图

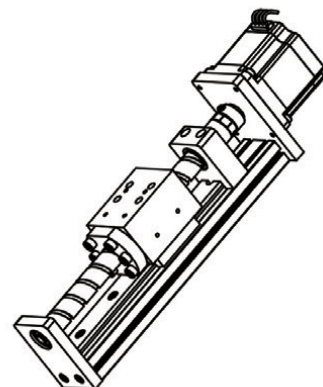
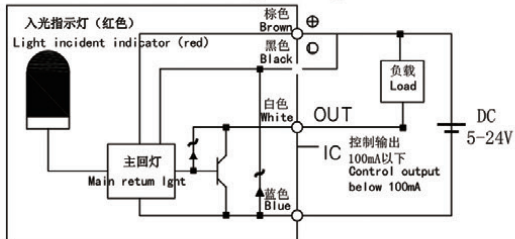
S	50	100	150	200	250	300	350	400	450	500	550
L	198	248	298	348	398	448	498	548	598	648	698
N	4*2	4*2	4*2	4*2	6*2	6*2	6*2	6*2	6*2	6*2	8*2

S	600	650	700	750	800	850	900	950	1000	1050
L	748	798	848	898	948	998	1048	1098	1148	1198
N	8*2	8*2	8*2	8*2	8*2	8*2	10*2	10*2	10*2	10*2

42mm电机尺寸图

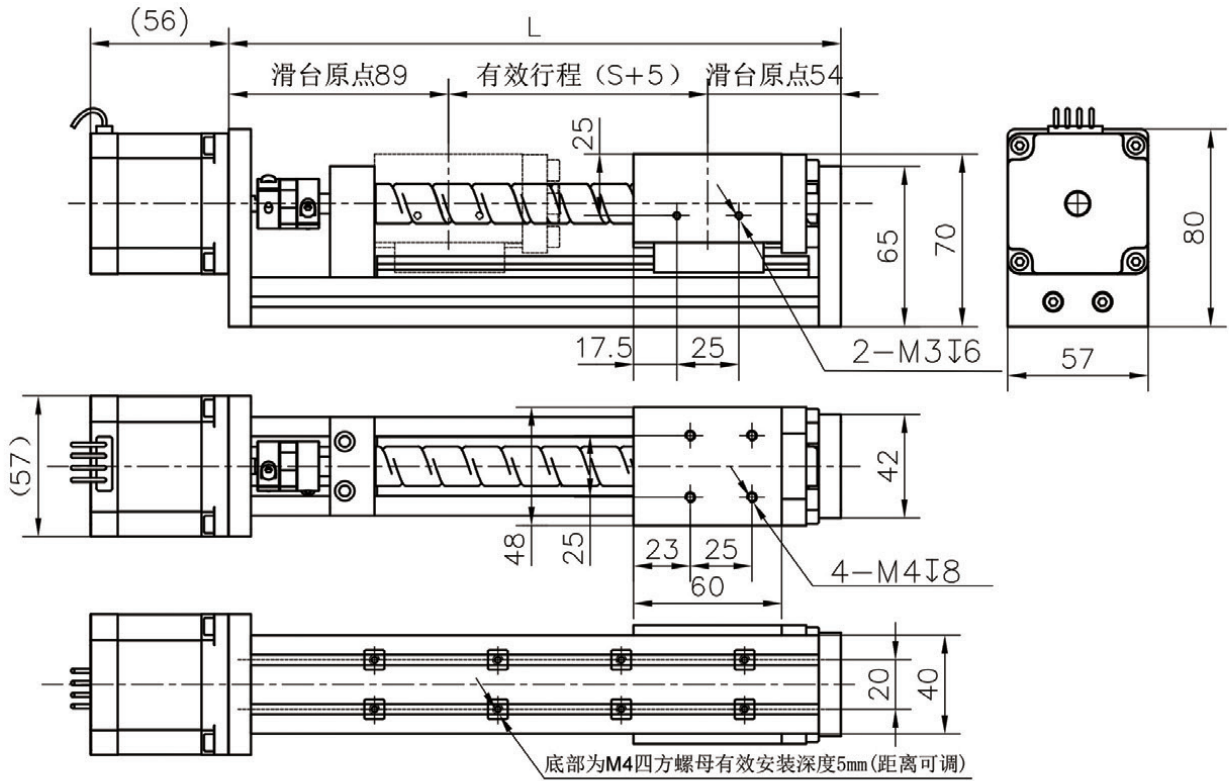


感应器接线图
Sensor wiring diagram



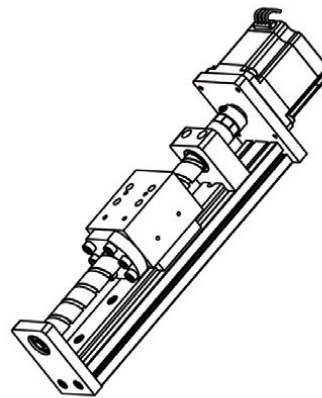
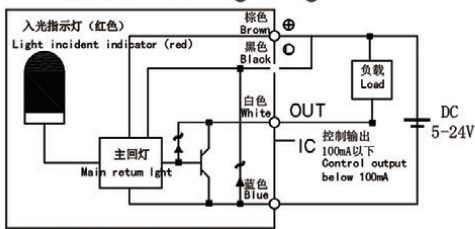
Dimensions 尺寸图

57mm电机尺寸图

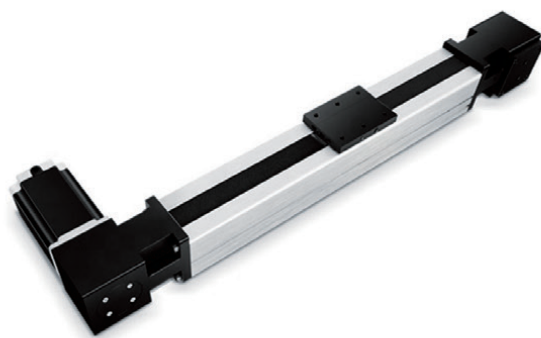


底部为M4滑块螺母安装数量(底部两边对称)

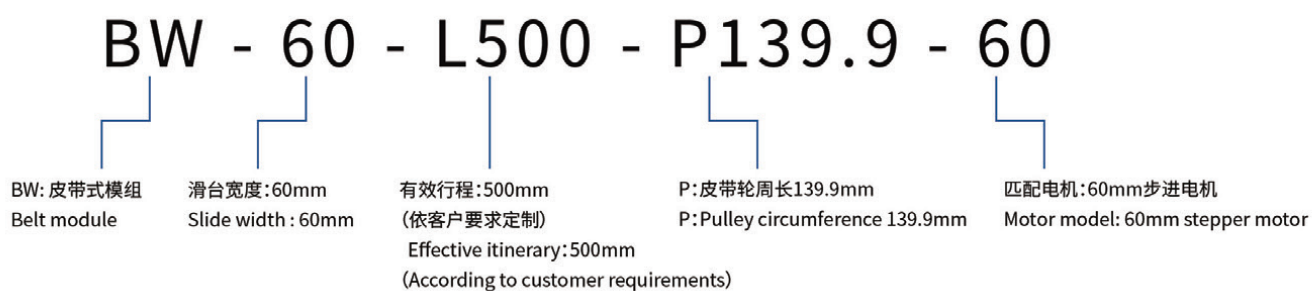
感应器接线图
Sensor wiring diagram



BW60系列直线模组 BW60 series linear module



Naming rules 命名规则



Technical parameter 技术参数

Product basic parameters 产品基础参数	电机型号(mm) motor model	60
	重复定位精度 (mm) Position Accuracy	±0.05
	运行寿命 (小时) Operating life	10000
	皮带轮周长 (mm) Pulley circumference	139.9
	水平最大负载(kg) Max Horizontal Loadings	25
	垂直最大负载(kg) Max Vertical Loading	不建议
	空载满速度(mm/s) No-load full speed	2100
	额定加速度(mm/s ²) Rated Acceleration	100
	最大推力(N) Maximum thrust	60

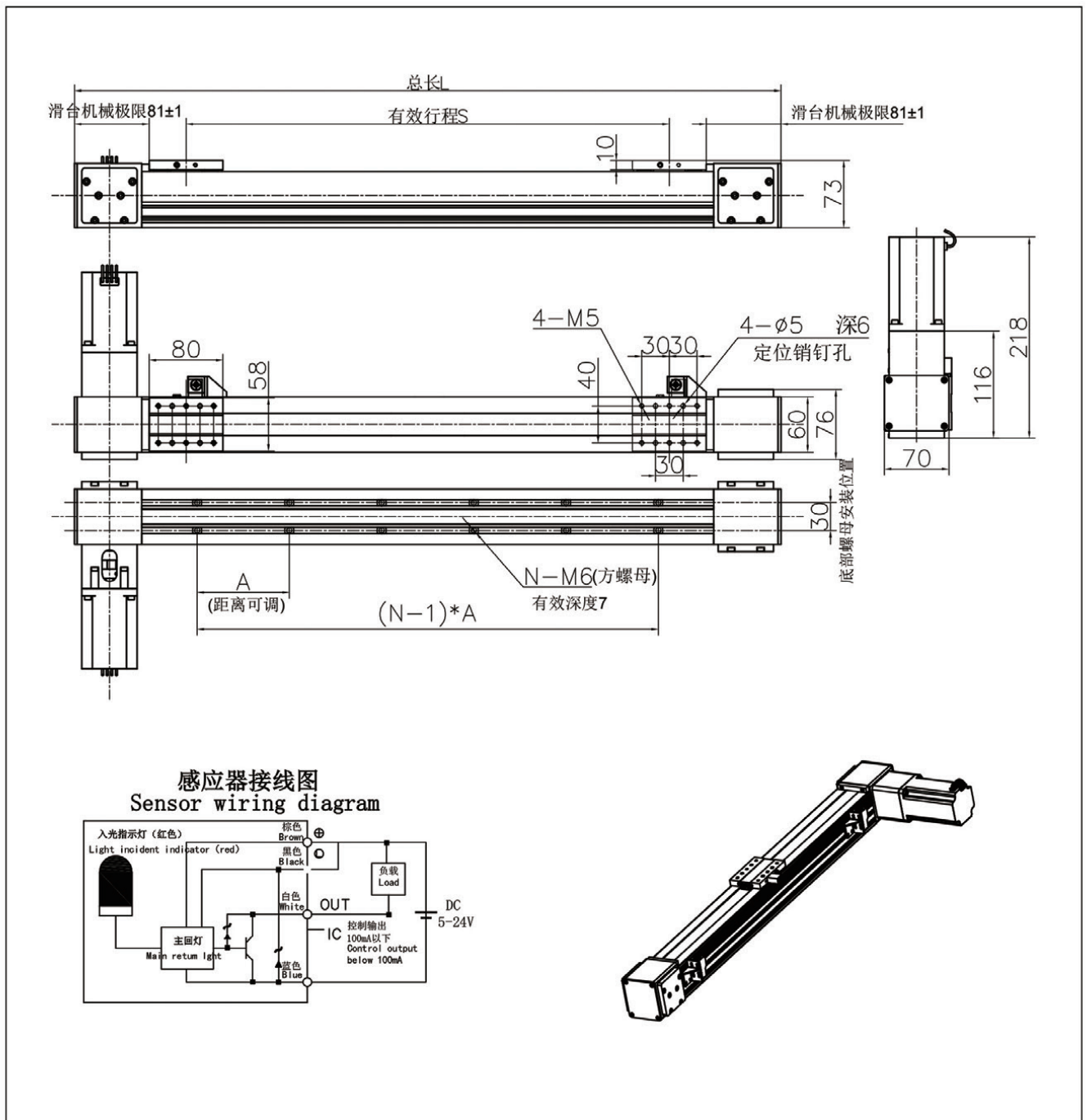
Features 产品特点

- ▶ 本体宽度60mm Body width 60mm
- ▶ 全封闭式结构 Totally enclosed structure
- ▶ 刚性好 Good rigidity
- ▶ 低噪音 Low noise
- ▶ 高精度 High precision

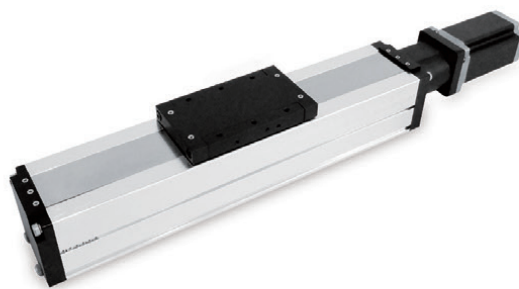
Dimensions 尺寸图

S	500	600	700	800	900	1000	1100	1200	1300	1400	1500	1600	1700	1800	1900	2000	2100
L	766	866	966	1066	1166	1266	1366	1466	1566	1666	1766	1866	1966	2066	2166	2266	2366
N	4*2	4*2	4*2	4*2	6*2	6*2	6*2	6*2	6*2	6*2	6*2	6*2	6*2	6*2	6*2	8*2	8*2

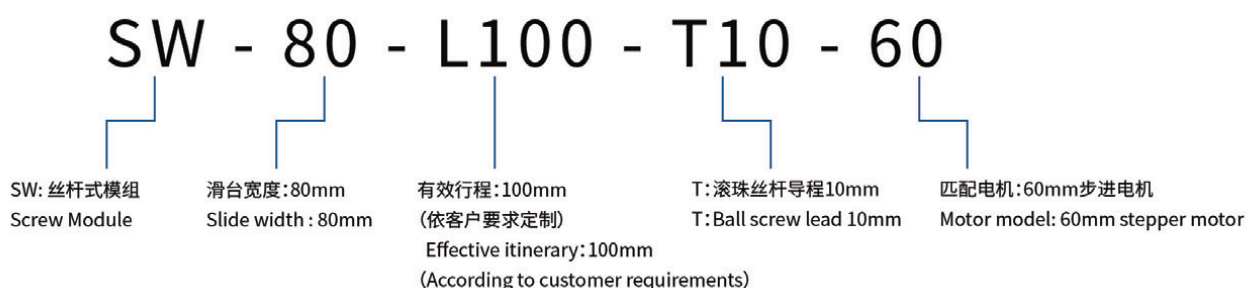
S	2200	2300	2400	2500	2600	2700	2800	2900	3000	3100	3200	3300	3400	3500	3600	3700	3800
L	2466	2566	2666	2766	2866	2966	3066	3166	3266	3366	3466	3566	3666	3766	3866	3966	4066
N	8*2	8*2	8*2	8*2	8*2	8*2	8*2	8*2	12*2	12*2	12*2	12*2	12*2	12*2	12*2	12*2	12*2



SW80系列直线模组 SW80 series linear module



Naming rules 命名规则



Technical parameter 技术参数

产品基础参数 Product basic parameters	电机型号(mm) motor model	60
	滚珠丝杆直径 (mm) Ball screw diameter	φ16
	重复定位精度 (mm) Position Accuracy	±0.03
	运行寿命 (小时) Operating life	10000
	滚珠丝杆导程 (mm) Ball screw lead	10
	水平最大负载(kg) Max Horizontal Loadings	40
	垂直最大负载(kg) Max Vertical Loading	20
	空载满速度(mm/s) No-load full speed	150
	额定加速度(mm/s ²) Rated Acceleration	100
	最大推力(N) Maximum thrust	452

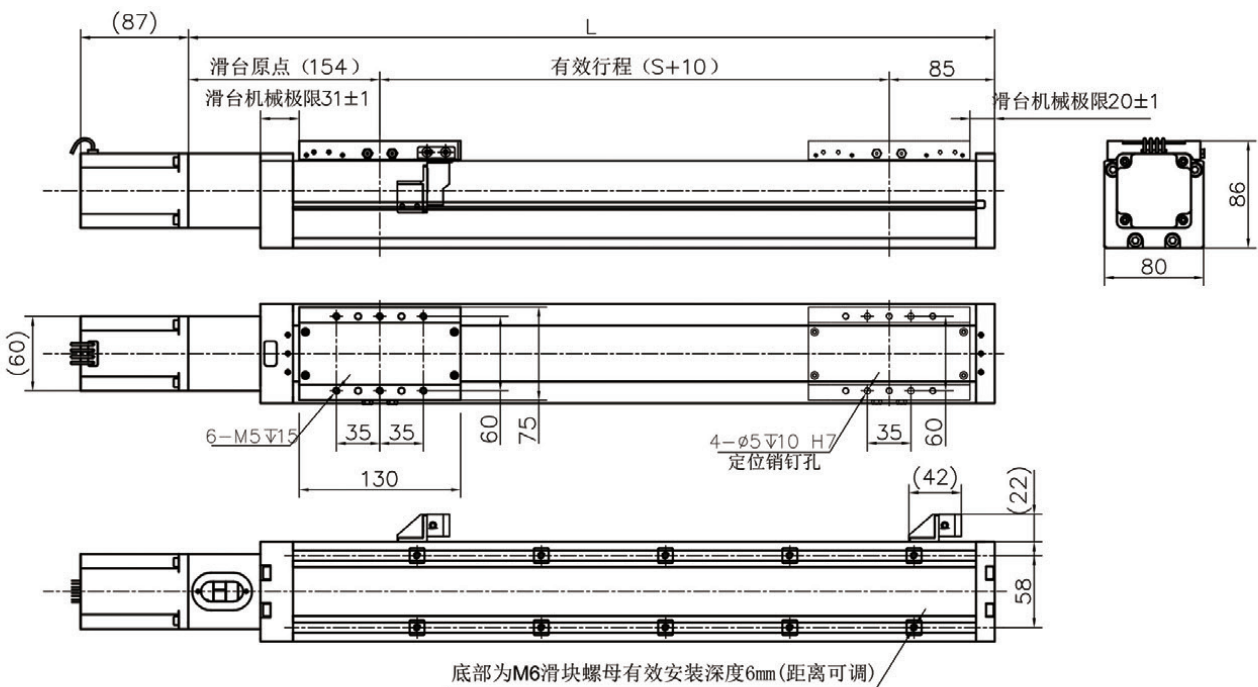
Features 产品特点

- ▶ 本体宽度80mm Body width 80mm
- ▶ 全封闭式结构 Totally enclosed structure
- ▶ 刚性好 Good rigidity
- ▶ 低噪音 Low noise
- ▶ 高精度 High precision

Dimensions 尺寸图

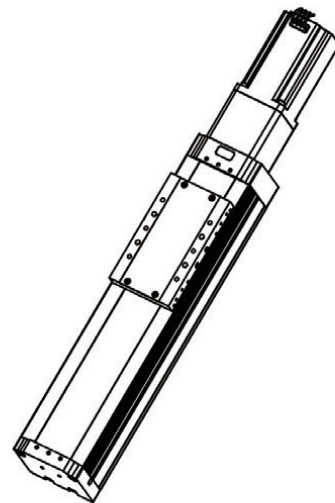
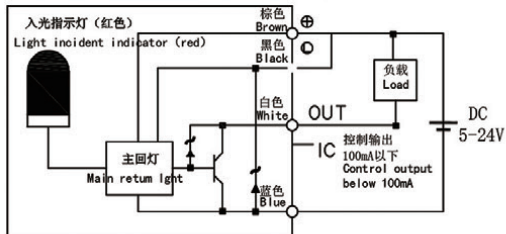
S	50	100	150	200	250	300	350	400	450	500	550
L	198	248	298	348	398	448	498	548	598	648	698
N	4*2	4*2	4*2	4*2	6*2	6*2	6*2	6*2	6*2	6*2	8*2

S	600	650	700	750	800	850	900	950	1000	1050
L	748	798	848	898	948	998	1048	1098	1148	1198
N	8*2	8*2	8*2	8*2	8*2	8*2	10*2	10*2	10*2	10*2

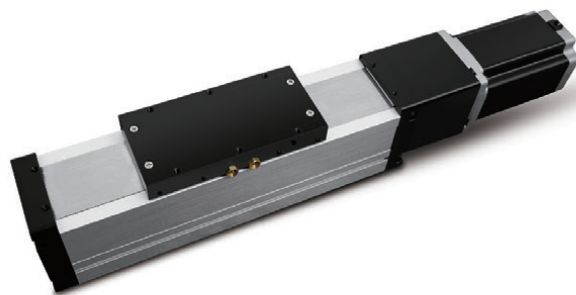


底部为M6滑块螺母安装数量(底部两边对称)

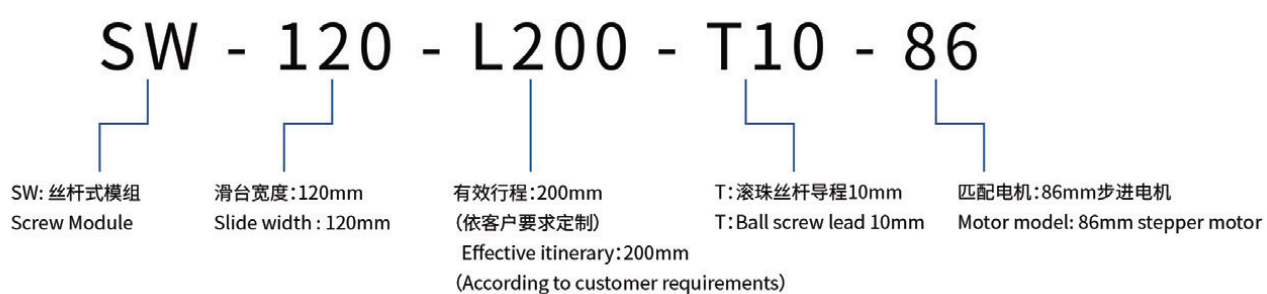
感应器接线图
Sensor wiring diagram



SW120系列直线模组 SW120 series linear module



Naming rules 命名规则



Technical parameter 技术参数

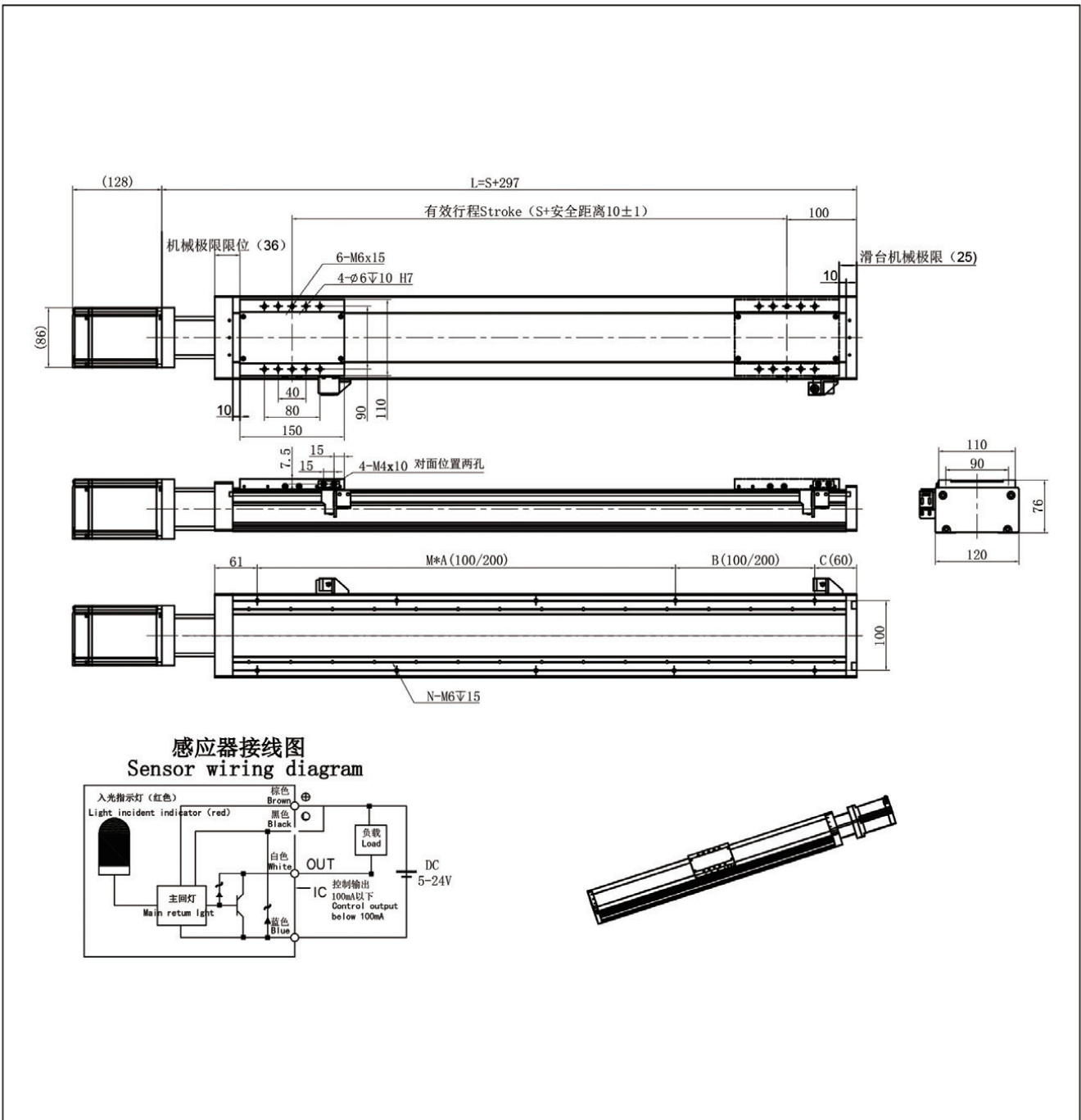
产品基础参数 Product basic parameters	电机型号(mm) motor model	86
	滚珠丝杆直径 (mm) Ball screw diameter	φ20
	重复定位精度 (mm) Position Accuracy	±0.03
	运行寿命 (小时) Operating life	10000
	滚珠丝杆导程 (mm) Ball screw lead	10
	水平最大负载(kg) Max Horizontal Loadings	100
	垂直最大负载(kg) Max Vertical Loading	50
	空载满速度(mm/s) No-load full speed	150
	额定加速度(mm/s ²) Rated Acceleration	100
	最大推力(N) Maximum thrust	2050

Features 产品特点

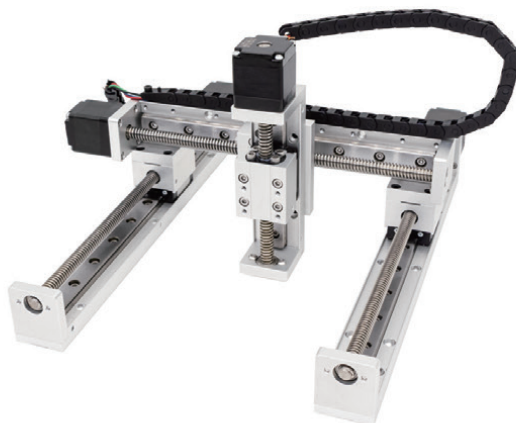
- ▶ 本体宽度120mm Body width 120mm
- ▶ 全封闭式结构 Totally enclosed structure
- ▶ 刚性好 Good rigidity
- ▶ 低噪音 Low noise
- ▶ 高精度 High precision

Dimensions 尺寸图

S	100	200	300	400	500	600	700	800	900	1000	1100	1200	1300
L	397	497	597	697	797	897	997	1097	1197	1297	1397	1497	1597
A	100	100	100	100	100	100	100	100	200	200	200	200	200
B	100	100	100	100	100	100	100	100	200	100	200	100	200
C	60	60	60	60	60	60	60	60	60	60	60	60	60
M	1	2	3	4	5	6	7	8	4	5	5	6	6
N	6	8	10	12	14	16	18	20	12	14	14	16	16

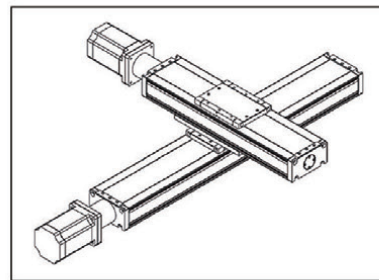
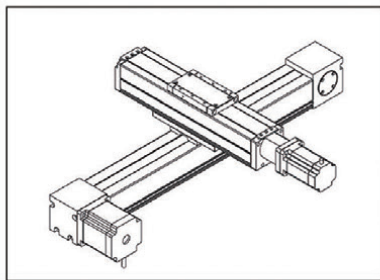
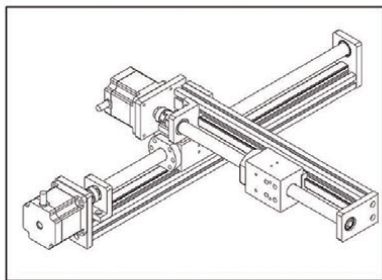


多轴控制方案 Optional accessories

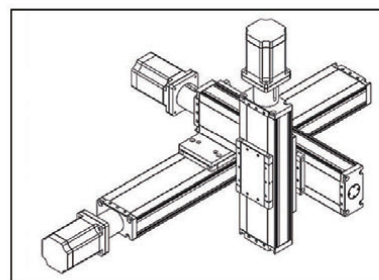
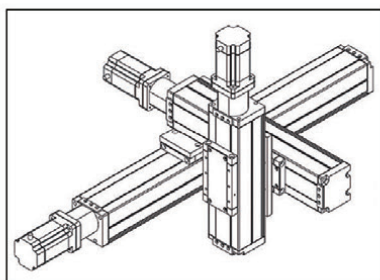
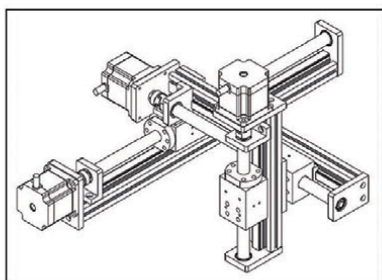


Cantilever structure 悬臂结构

2轴 Two-axis

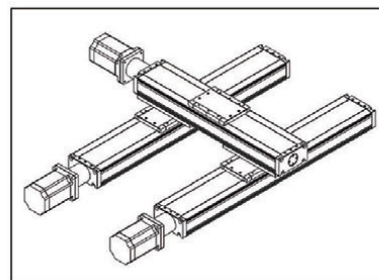
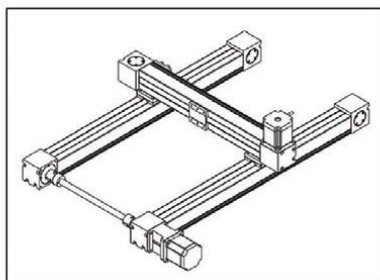
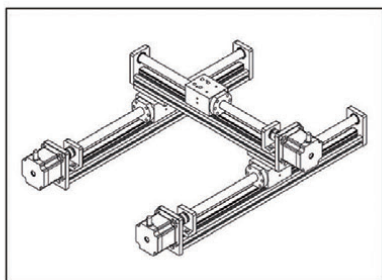


3轴 Three-axis

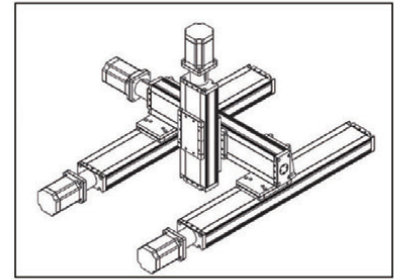
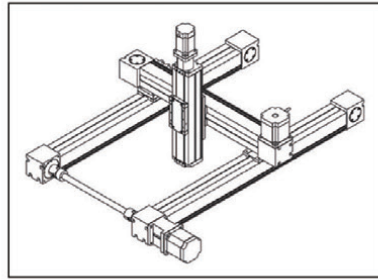
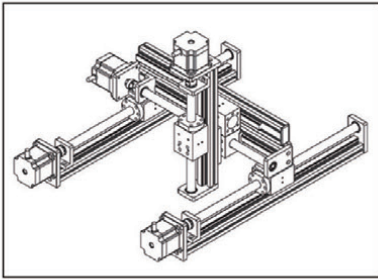


Gantry structure 龙门结构

2轴 Two-axis

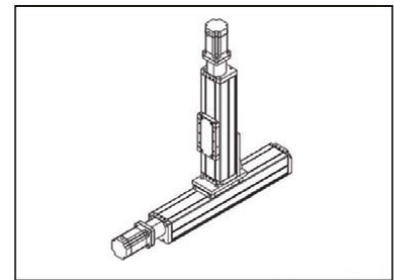
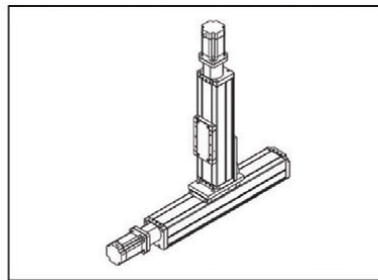
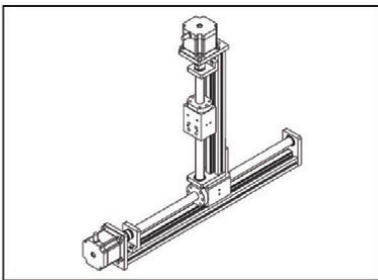


3轴 Three-axis

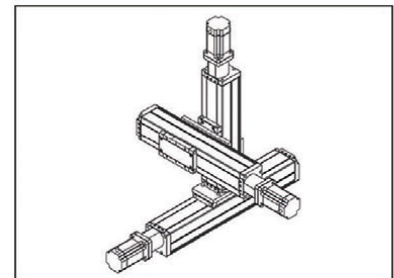
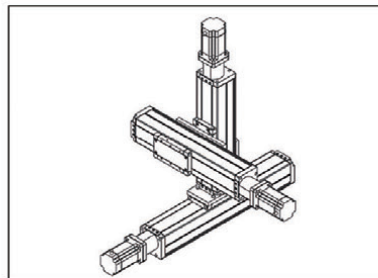
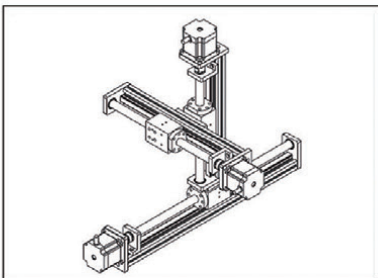


Polar structure 极坐标结构

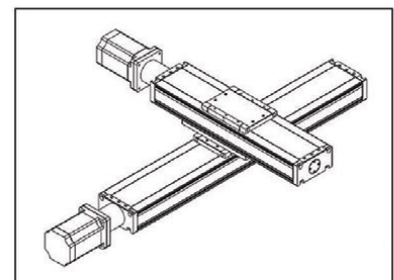
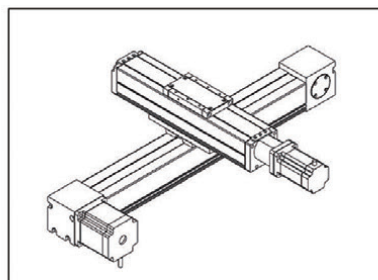
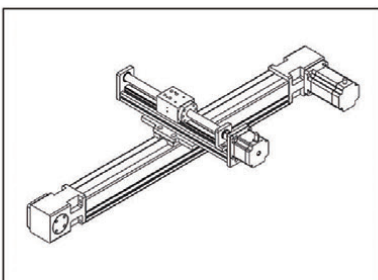
2轴 Two-axis



3轴 Three-axis



Cross structure 十字结构



可选配件 Optional accessories



限位开关 (NPN)
Limit switch (NPN)



直流24V电源
DC 24V power supply



单轴控制器
Single axis controller



双轴控制器
Dual axis controller



两相驱动器
Two-phase drive



三相驱动器
Three-phase drive

售前售后服务 Pre-sale & After-sales service

▶ 售前服务 Pre-sale service

- 专业的技术团队提供专业的技术建议与知道
Professional technical team provides professional technical advice and knowledge
- 全方位系统运动解决方案
Total System Motion Solutions
- 约定的时间内完成生产、调试、交付
Complete production, commissioning and delivery within the agreed time

▶ 售后服务 After-sales service

- 技术咨询服务
Technical Advisory Services
- 免费视频教学
Free video teaching
- 其他相关服务
Other related services

UMot 优摩特 UMOPCE[®]

重庆优摩特科技有限公司
CHONGQING UMOT TECHNOLOGY CO.,LTD



热线
电话

/023-86132606

邮箱: info@umottech.com | 网址: www.umotmotor.cn

公司地址: 重庆市九龙坡区火炬大道101号城市日记11-18号