

Technical drawing of a motor assembly, showing side and front views, dimensions, and specifications.

Dimensions (mm):

- Side View: 25 ± 0.5, 35 ± 0.5, 34 MAX, 20, 16, 12, 10, 7, 3, 35h7, 12, 3.
- Front View: 42, 11.2, 45°, 3, M3 10, 4-Ø3.5, 200 ± 10, 2510-06, UL1007 AWG26#.

Electrical Winding Drawing:

- Motor (M) with terminals A (BLK), C (GRN), B (RED), and D (BLU).
- Winding connections: A-B, B-C, C-D, D-A.

Specifications Table:

特性 character	规格 specifications
1. 相数 Number of phase	2
2. 步距角 Step Angle	1.8°
3. 额定电压 Rated Voltage	DC 2.93V
4. 额定电流 Rated current	DC 1.33A
5. 保持转矩 Holding Torque	≥ 270mN.m
6. 相电阻 Winding resistance	2.2 ± 15% ohm (20°C)
7. 相电感 Winding inductaoce	3.5 ± 20% mH (1kHz)
8. 转向 (轴伸向看) Direction of rotation	A-AB-B-CW
9. 转动惯量 Rotor Inertia	35 g.cm²
10. 电机重量 Weight	0.22Kg
11. 绝缘等级 Insulation class	B Class

Reduction Ratio: 减速比: 1/7

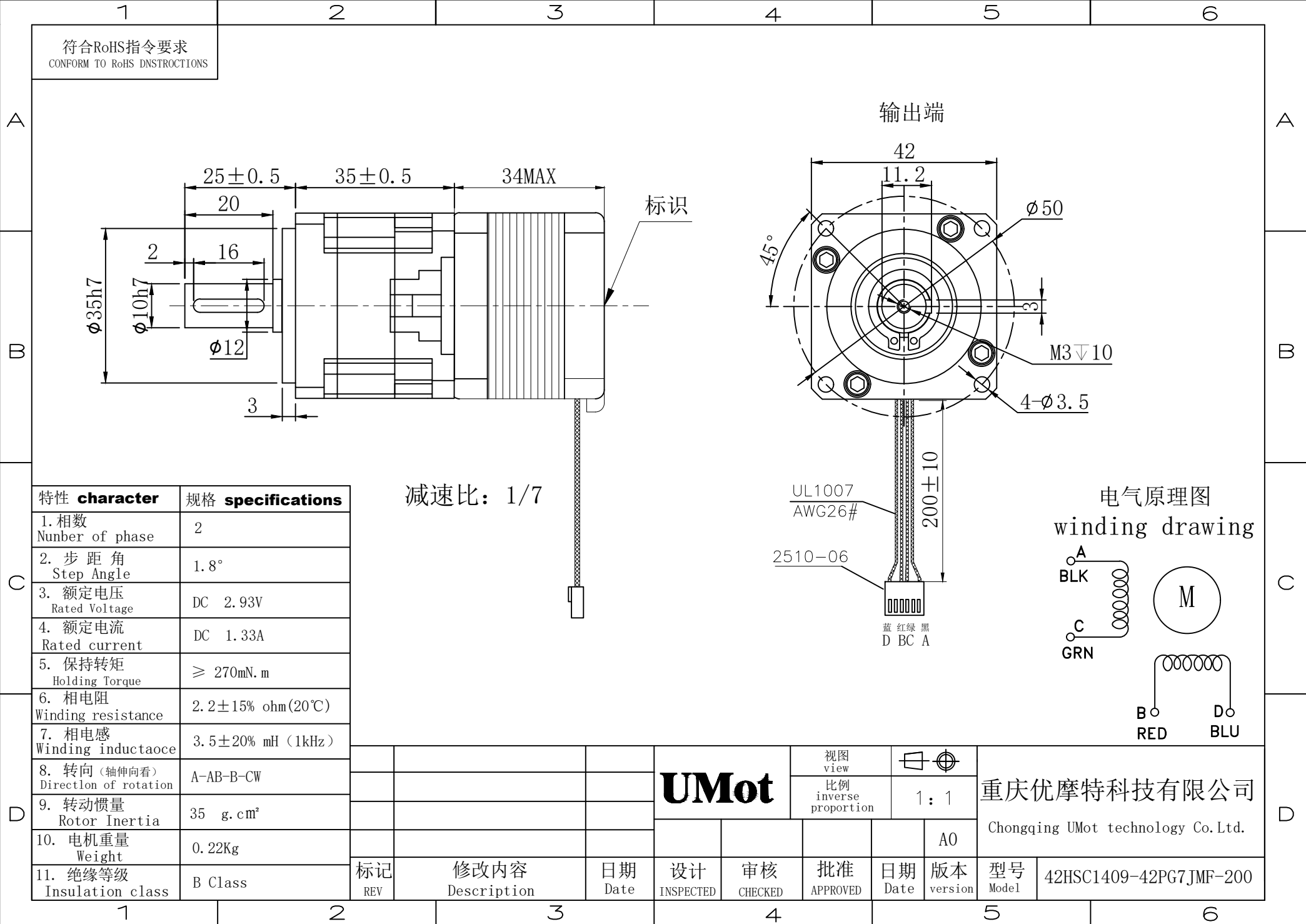
Company Information:

- 重庆优摩特科技有限公司
Chongqing UMot technology Co.Ltd.
- 型号: 42HSC1409-42PG7JMF-200

Approval Table:

设计 INSPECTED	审核 CHECKED	批准 APPROVED	日期 Date	版本 version
				A0

UMot



1 2 3 4 5 6

符合RoHS指令要求
CONFORM TO RoHS DNSTRUCTIONS

A

输出端

标识

42
11.2
45°
Ø50
3
M3▽10
4-Ø3.5
200±10
2510-06
UL1007
AWG26#
蓝 红 绿 黑
D B C A

电气原理图
winding drawing

A
BLK
C
GRN
M
B
RED
D
BLU

特性 character 规格 specifications

1. 相数 Number of phase	2
2. 步距角 Step Angle	1.8°
3. 额定电压 Rated Voltage	DC 2.93V
4. 额定电流 Rated current	DC 1.33A
5. 保持转矩 Holding Torque	≥ 270mN.m
6. 相电阻 Winding resistance	2.2±15% ohm(20℃)
7. 相电感 Winding inductaoce	3.5±20% mH (1kHz)
8. 转向 (轴伸向看) Direction of rotation	A-AB-B-CW
9. 转动惯量 Rotor Inertia	35 g.cm²
10. 电机重量 Weight	0.22Kg
11. 绝缘等级 Insulation class	B Class

减速比: 1/7

视图
view
比例
inverse
proportion
1: 1

UMot

重庆优摩特科技有限公司
Chongqing UMot technology Co.Ltd.

设计
INSPECTED
审核
CHECKED
批准
APPROVED
日期
Date
版本
version
A0

型号
Model
42HSC1409-42PG7JMF-200

1 2 3 4 5 6

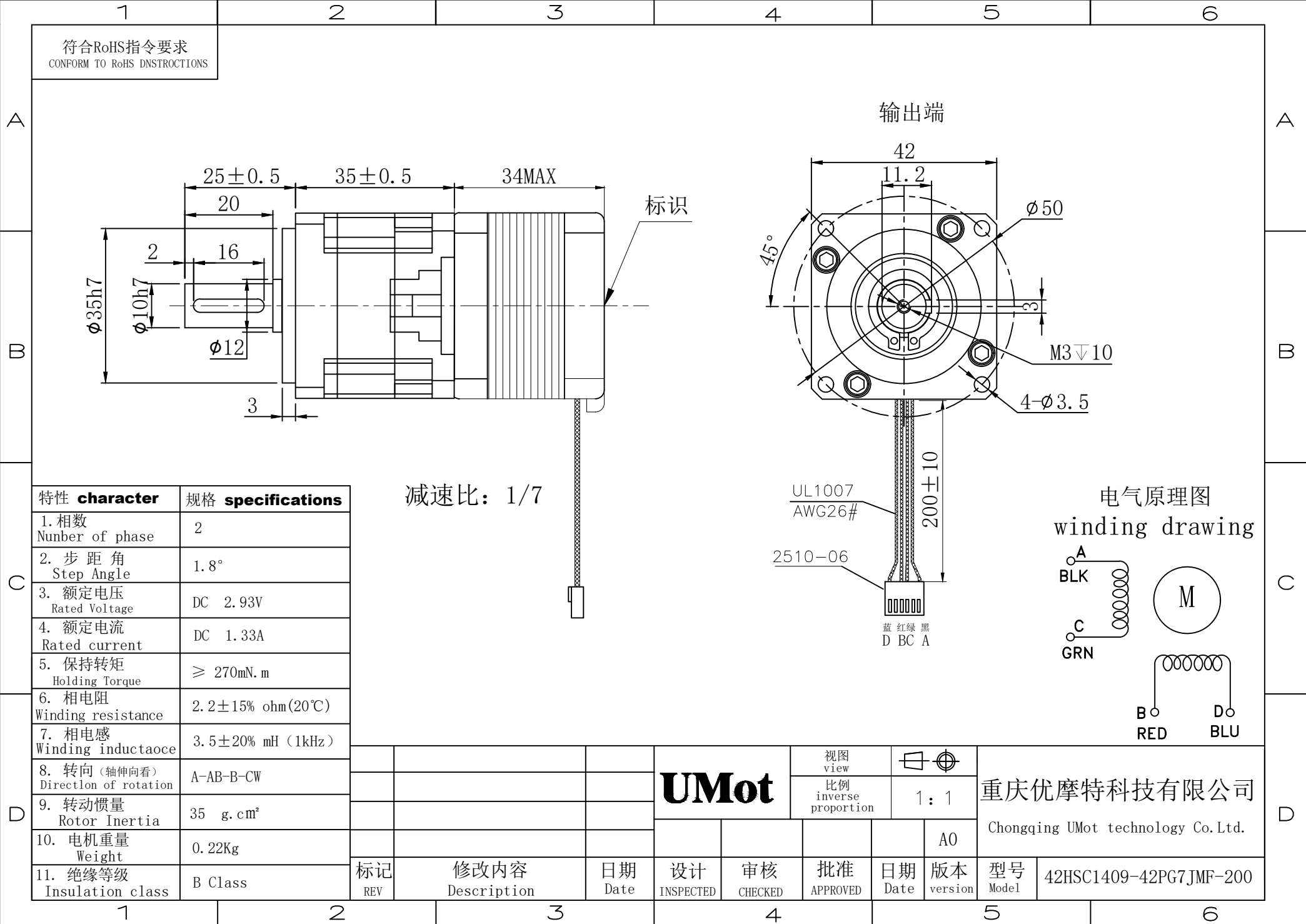
A

B

C

D

1 2 3 4 5 6



Technical drawing of a motor assembly, showing side and front views, dimensions, and specifications.

Dimensions (mm):

- Side View: 25 ± 0.5, 35 ± 0.5, 34 MAX, 20, 16, 12, 10, 7, 3, 35h7, 12, 3.
- Front View: 42, 11.2, 45°, 3, M3, 10, 4-Ø3.5, 200 ± 10, 2510-06, UL1007 AWG26#.

Electrical Winding Drawing:

- Motor (M) with terminals A (BLK), C (GRN), B (RED), and D (BLU).
- Winding connections: A-B, C-D, and B-D.

Specifications Table:

特性 character	规格 specifications
1. 相数 Number of phase	2
2. 步距角 Step Angle	1.8°
3. 额定电压 Rated Voltage	DC 2.93V
4. 额定电流 Rated current	DC 1.33A
5. 保持转矩 Holding Torque	≥ 270mN.m
6. 相电阻 Winding resistance	2.2 ± 15% ohm (20°C)
7. 相电感 Winding inductaoce	3.5 ± 20% mH (1kHz)
8. 转向 (轴伸向看) Direction of rotation	A-AB-B-CW
9. 转动惯量 Rotor Inertia	35 g.cm²
10. 电机重量 Weight	0.22Kg
11. 绝缘等级 Insulation class	B Class

Reduction Ratio: 减速比: 1/7

Company Information:

- 重庆优摩特科技有限公司
Chongqing UMot technology Co.Ltd.

Approval and Revision Table:

设计 INSPECTED	审核 CHECKED	批准 APPROVED	日期 Date	版本 version
				A0

Marking and Revision Table:

标记 REV	修改内容 Description	日期 Date

Technical drawing of a motor assembly, showing side and front views, dimensions, and specifications.

Dimensions (mm):

- Side View: 25 ± 0.5, 35 ± 0.5, 34 MAX, 20, 16, 12, 10, 7, 3, 35h7, 12, 3.
- Front View: 42, 11.2, 45°, 3, M3, 10, 4-Ø3.5, 200 ± 10, 2510-06, UL1007 AWG26#.

Electrical Winding Drawing:

- Motor (M) with terminals A (BLK), C (GRN), B (RED), and D (BLU).
- Winding connections: A-B, C-D, and B-D.

Specifications Table:

特性 character	规格 specifications
1. 相数 Number of phase	2
2. 步距角 Step Angle	1.8°
3. 额定电压 Rated Voltage	DC 2.93V
4. 额定电流 Rated current	DC 1.33A
5. 保持转矩 Holding Torque	≥ 270mN.m
6. 相电阻 Winding resistance	2.2 ± 15% ohm (20°C)
7. 相电感 Winding inductaoce	3.5 ± 20% mH (1kHz)
8. 转向 (轴伸向看) Direction of rotation	A-AB-B-CW
9. 转动惯量 Rotor Inertia	35 g.cm²
10. 电机重量 Weight	0.22Kg
11. 绝缘等级 Insulation class	B Class

Reduction Ratio: 减速比: 1/7

Company Information:

- 重庆优摩特科技有限公司
Chongqing UMot technology Co.Ltd.

Approval and Revision Table:

设计 INSPECTED	审核 CHECKED	批准 APPROVED	日期 Date	版本 version
				A0

Marking and Revision Table:

标记 REV	修改内容 Description	日期 Date

Technical drawing of a motor assembly, showing side and front views, dimensions, and specifications.

Dimensions (mm):

- Side View: 25 ± 0.5, 35 ± 0.5, 34 MAX, 20, 16, 12, 10, 7, 3, 35h7, 12, 3.
- Front View: 42, 11.2, 45°, 3, M3, 10, 4-Ø3.5, 200 ± 10, 2510-06, UL1007 AWG26#.

Electrical Winding Drawing:

- Motor (M) with terminals A (BLK), C (GRN), B (RED), and D (BLU).
- Winding connections: A-B, C-D, and B-D.

Specifications Table:

特性 character	规格 specifications
1. 相数 Number of phase	2
2. 步距角 Step Angle	1.8°
3. 额定电压 Rated Voltage	DC 2.93V
4. 额定电流 Rated current	DC 1.33A
5. 保持转矩 Holding Torque	≥ 270mN.m
6. 相电阻 Winding resistance	2.2 ± 15% ohm (20°C)
7. 相电感 Winding inductaoce	3.5 ± 20% mH (1kHz)
8. 转向 (轴伸向看) Direction of rotation	A-AB-B-CW
9. 转动惯量 Rotor Inertia	35 g.cm²
10. 电机重量 Weight	0.22Kg
11. 绝缘等级 Insulation class	B Class

Reduction Ratio: 减速比: 1/7

Company Information:

- 重庆优摩特科技有限公司
Chongqing UMot technology Co.Ltd.

Approval and Revision Table:

设计 INSPECTED	审核 CHECKED	批准 APPROVED	日期 Date	版本 version
				A0

Marking and Revision Table:

标记 REV	修改内容 Description	日期 Date