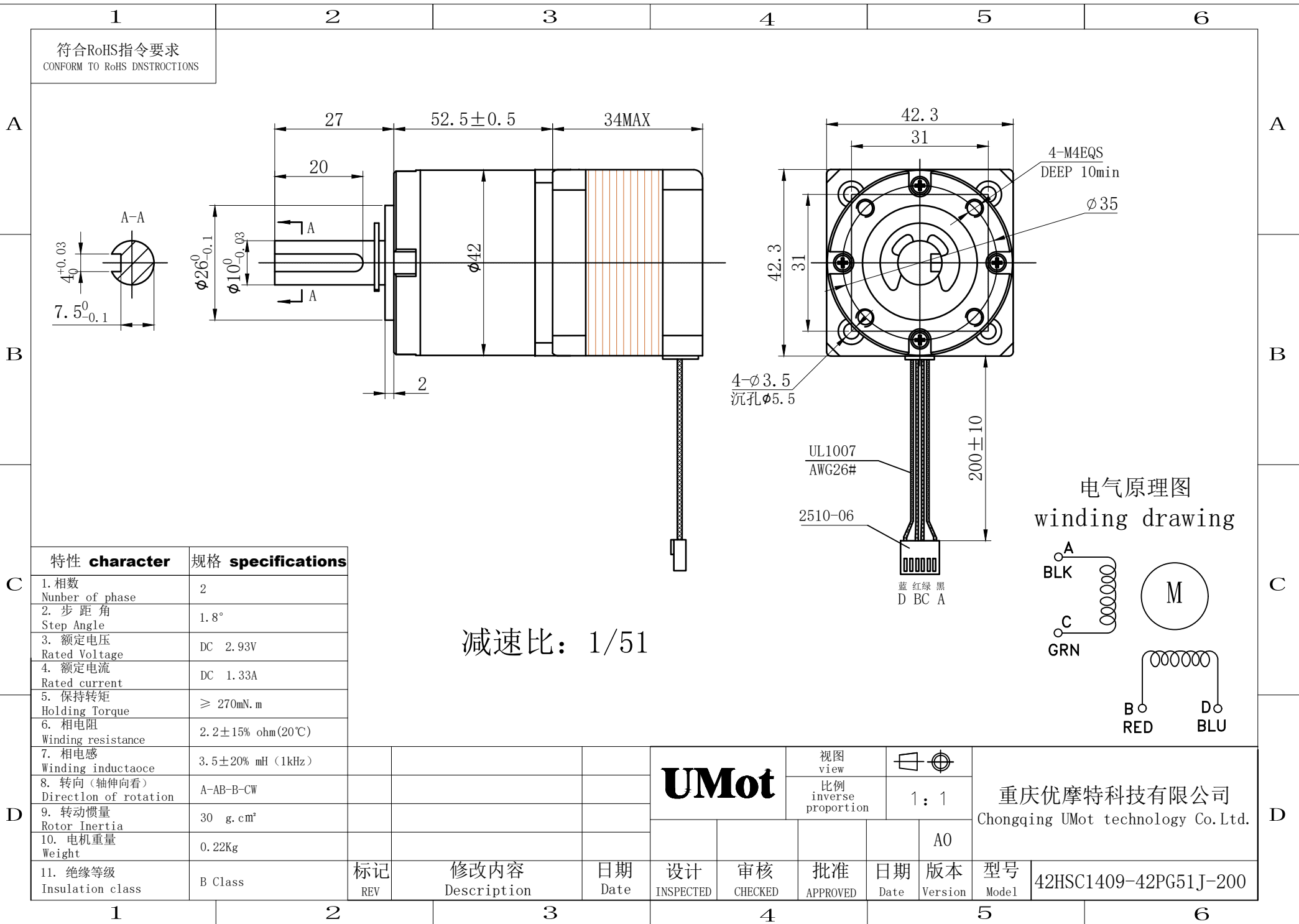


	1	2	3	4	5	6																								
A	符合RoHS指令要求 CONFORM TO RoHS DNSTROCTIONS																													
B	<p>The technical drawing includes three main views:<ul style="list-style-type: none"><li><b>Side View:</b> Shows the motor's profile with dimensions: total length 52.5 ± 0.5 mm, mounting flange diameter Ø42 mm, and various axial dimensions (27 mm, 20 mm, 34 MAX).</li><li><b>Front View:</b> Shows the circular face with four M4EQS screws, a central shaft with a keyway, and mounting holes (Ø3.5, 沉孔 Ø5.5). The outer frame has a width of 42.3 mm.</li><li><b>Winding Diagram:</b> Labeled "电气原理图 winding drawing", it shows the internal coil connections between terminals A (BLK), B (RED), C (GRN), and D (BLU).</li></ul></p>																													
C	<table border="1"><thead><tr><th>特性 character</th><th>规格 specifications</th></tr></thead><tbody><tr><td>1. 相数 Number of phase</td><td>2</td></tr><tr><td>2. 步距角 Step Angle</td><td>1.8°</td></tr><tr><td>3. 额定电压 Rated Voltage</td><td>DC 2.93V</td></tr><tr><td>4. 额定电流 Rated current</td><td>DC 1.33A</td></tr><tr><td>5. 保持转矩 Holding Torque</td><td>≥ 270mN.m</td></tr><tr><td>6. 相电阻 Winding resistance</td><td>2.2 ± 15% ohm(20℃)</td></tr><tr><td>7. 相电感 Winding inductaoce</td><td>3.5 ± 20% mH (1kHz)</td></tr><tr><td>8. 转向（轴伸向看） Direction of rotation</td><td>A-AB-B-CW</td></tr><tr><td>9. 转动惯量 Rotor Inertia</td><td>30 g.cm²</td></tr><tr><td>10. 电机重量 Weight</td><td>0.22Kg</td></tr><tr><td>11. 绝缘等级 Insulation class</td><td>B Class</td></tr></tbody></table>						特性 character	规格 specifications	1. 相数 Number of phase	2	2. 步距角 Step Angle	1.8°	3. 额定电压 Rated Voltage	DC 2.93V	4. 额定电流 Rated current	DC 1.33A	5. 保持转矩 Holding Torque	≥ 270mN.m	6. 相电阻 Winding resistance	2.2 ± 15% ohm(20℃)	7. 相电感 Winding inductaoce	3.5 ± 20% mH (1kHz)	8. 转向（轴伸向看） Direction of rotation	A-AB-B-CW	9. 转动惯量 Rotor Inertia	30 g.cm²	10. 电机重量 Weight	0.22Kg	11. 绝缘等级 Insulation class	B Class
特性 character	规格 specifications																													
1. 相数 Number of phase	2																													
2. 步距角 Step Angle	1.8°																													
3. 额定电压 Rated Voltage	DC 2.93V																													
4. 额定电流 Rated current	DC 1.33A																													
5. 保持转矩 Holding Torque	≥ 270mN.m																													
6. 相电阻 Winding resistance	2.2 ± 15% ohm(20℃)																													
7. 相电感 Winding inductaoce	3.5 ± 20% mH (1kHz)																													
8. 转向（轴伸向看） Direction of rotation	A-AB-B-CW																													
9. 转动惯量 Rotor Inertia	30 g.cm²																													
10. 电机重量 Weight	0.22Kg																													
11. 绝缘等级 Insulation class	B Class																													
D	<div>减速比：1/51</div> <table border="1"><thead><tr><th colspan="3">UMot</th><th>视图 view</th><th>比例 inverse proportion</th><th colspan="2">重庆优摩特科技有限公司 Chongqing UMot technology Co.Ltd.</th></tr><tr><th>设计 INSPECTED</th><th>审核 CHECKED</th><th>批准 APPROVED</th><th>日期 Date</th><th>版本 Version</th><th>型号 Model</th><th>42HSC1409-42PG51J-200</th></tr></thead><tbody><tr><td></td><td></td><td></td><td></td><td>A0</td><td></td><td></td></tr></tbody></table>						UMot			视图 view	比例 inverse proportion	重庆优摩特科技有限公司 Chongqing UMot technology Co.Ltd.		设计 INSPECTED	审核 CHECKED	批准 APPROVED	日期 Date	版本 Version	型号 Model	42HSC1409-42PG51J-200					A0					
UMot			视图 view	比例 inverse proportion	重庆优摩特科技有限公司 Chongqing UMot technology Co.Ltd.																									
设计 INSPECTED	审核 CHECKED	批准 APPROVED	日期 Date	版本 Version	型号 Model	42HSC1409-42PG51J-200																								
				A0																										



Technical drawing of a motor assembly, showing dimensions, electrical specifications, and a winding diagram.

**Dimensions (mm):**

- Overall length: 52.5 ± 0.5
- Shaft diameter:  $\phi 42$
- Shaft length: 27
- Shaft diameter:  $\phi 10^{+0}_{-0.03}$
- Shaft diameter:  $\phi 26^{+0}_{-0.1}$
- Shaft diameter:  $\phi 7.5^{+0}_{-0.1}$
- Shaft diameter:  $\phi 4^{+0}_{-0}$
- Shaft diameter:  $\phi 35$
- Shaft diameter:  $\phi 3.5$
- Shaft diameter:  $\phi 5.5$
- Shaft diameter:  $\phi 20$
- Shaft diameter:  $\phi 31$
- Shaft diameter:  $\phi 42.3$
- Shaft diameter:  $\phi 31$
- Shaft diameter:  $\phi 200 \pm 10$

**Electrical Specifications:**

特性 character	规格 specifications
1. 相数 Number of phase	2
2. 步距角 Step Angle	1.8°
3. 额定电压 Rated Voltage	DC 2.93V
4. 额定电流 Rated current	DC 1.33A
5. 保持转矩 Holding Torque	≥ 270mN.m
6. 相电阻 Winding resistance	2.2 ± 15% ohm(20°C)
7. 相电感 Winding inductaoce	3.5 ± 20% mH (1kHz)
8. 转向 (轴伸向看) Direction of rotation	A-AB-B-CW
9. 转动惯量 Rotor Inertia	30 g.cm²
10. 电机重量 Weight	0.22Kg
11. 绝缘等级 Insulation class	B Class

**Winding Diagram:**

Electrical principle diagram (winding drawing) showing the motor (M) and its connections. The motor is connected to a power source (A) and a ground (C). The motor has two output terminals: B (RED) and D (BLU).

**Motor Model:** 42HSC1409-42PG51J-200

**Company:** 重庆优摩特科技有限公司 (Chongqing UMot technology Co.Ltd.)

**Version:** A0

**Scale:** 1:1

**View:** 视图 view

**Proportion:** 比例 inverse proportion

**Design:** 设计 INSPECTED

**Check:** 审核 CHECKED

**Approval:** 批准 APPROVED

**Date:** 日期 Date

**Version:** 版本 Version

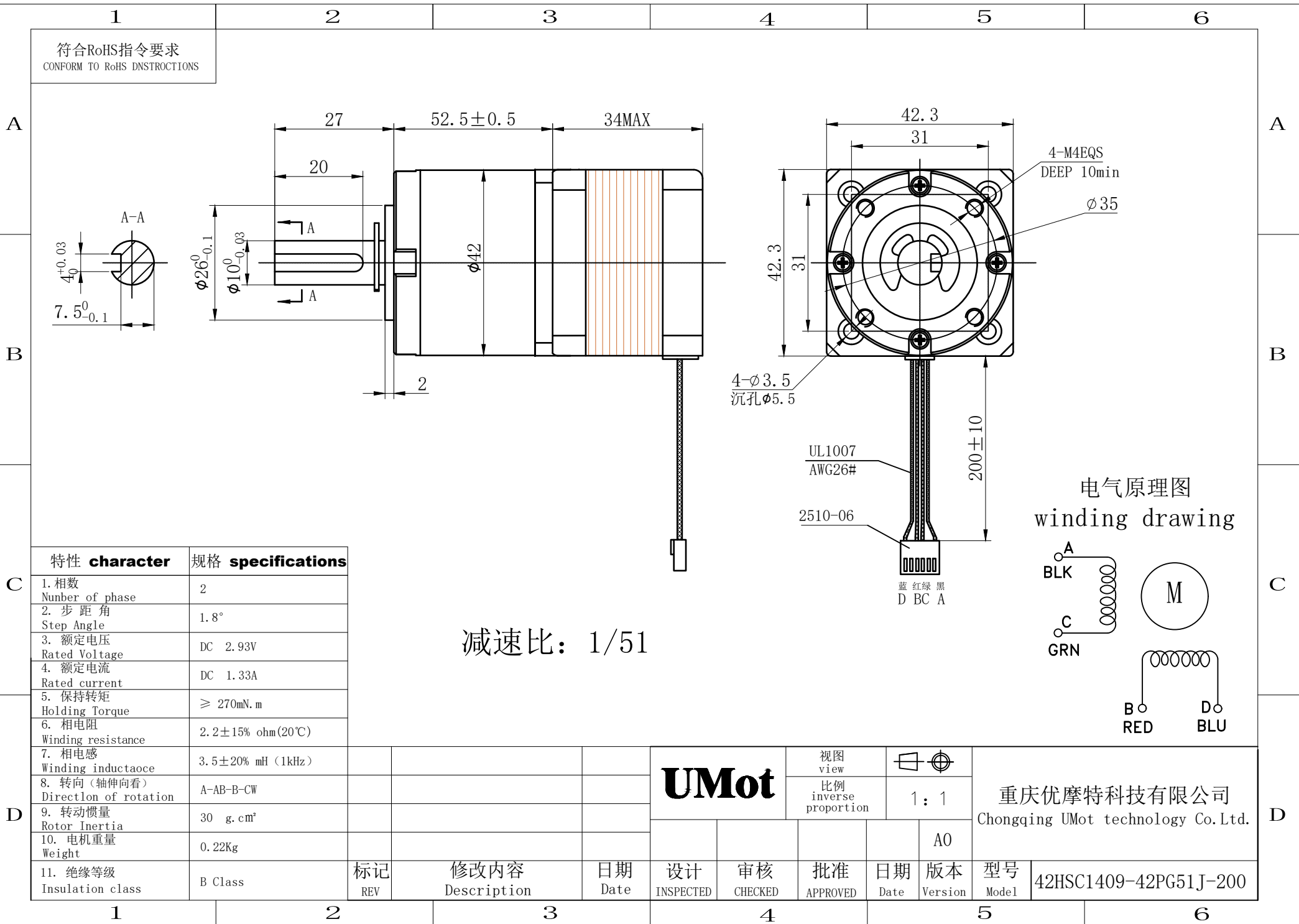
**Model:** 型号 Model

**Marking:** 标记 REV

**Description:** 修改内容 Description

**Date:** 日期 Date

**Reduction Ratio:** 减速比: 1/51



	1	2	3	4	5	6																								
A	符合RoHS指令要求 CONFORM TO RoHS DNSTROCTIONS																													
B	<p>The technical drawing includes three main views:<ul style="list-style-type: none"><li><b>Side View:</b> Shows the motor's profile with dimensions: total length 52.5 ± 0.5 mm, mounting flange diameter Ø42 mm, and shaft diameter Ø10<sup>+0/-0.03</sup> mm. The mounting flange has a thickness of 27 mm and a central bore of 20 mm.</li><li><b>Front View:</b> Shows the circular motor face with a square mounting flange (42.3 mm x 42.3 mm) featuring four M4EQS screws (DEEP 10min). The central bore is Ø35 mm. The cable exit is at the bottom center.</li><li><b>Winding Diagram:</b> Labeled "电气原理图 winding drawing", it shows a two-phase motor circuit with terminals A (BLK), B (RED), C (GRN), and D (BLU).</li></ul></p>																													
C	<table border="1"><thead><tr><th>特性 character</th><th>规格 specifications</th></tr></thead><tbody><tr><td>1. 相数 Number of phase</td><td>2</td></tr><tr><td>2. 步距角 Step Angle</td><td>1.8°</td></tr><tr><td>3. 额定电压 Rated Voltage</td><td>DC 2.93V</td></tr><tr><td>4. 额定电流 Rated current</td><td>DC 1.33A</td></tr><tr><td>5. 保持转矩 Holding Torque</td><td>≥ 270mN.m</td></tr><tr><td>6. 相电阻 Winding resistance</td><td>2.2 ± 15% ohm(20℃)</td></tr><tr><td>7. 相电感 Winding inductaoce</td><td>3.5 ± 20% mH (1kHz)</td></tr><tr><td>8. 转向（轴伸向看） Direction of rotation</td><td>A-AB-B-CW</td></tr><tr><td>9. 转动惯量 Rotor Inertia</td><td>30 g.cm²</td></tr><tr><td>10. 电机重量 Weight</td><td>0.22Kg</td></tr><tr><td>11. 绝缘等级 Insulation class</td><td>B Class</td></tr></tbody></table>						特性 character	规格 specifications	1. 相数 Number of phase	2	2. 步距角 Step Angle	1.8°	3. 额定电压 Rated Voltage	DC 2.93V	4. 额定电流 Rated current	DC 1.33A	5. 保持转矩 Holding Torque	≥ 270mN.m	6. 相电阻 Winding resistance	2.2 ± 15% ohm(20℃)	7. 相电感 Winding inductaoce	3.5 ± 20% mH (1kHz)	8. 转向（轴伸向看） Direction of rotation	A-AB-B-CW	9. 转动惯量 Rotor Inertia	30 g.cm²	10. 电机重量 Weight	0.22Kg	11. 绝缘等级 Insulation class	B Class
特性 character	规格 specifications																													
1. 相数 Number of phase	2																													
2. 步距角 Step Angle	1.8°																													
3. 额定电压 Rated Voltage	DC 2.93V																													
4. 额定电流 Rated current	DC 1.33A																													
5. 保持转矩 Holding Torque	≥ 270mN.m																													
6. 相电阻 Winding resistance	2.2 ± 15% ohm(20℃)																													
7. 相电感 Winding inductaoce	3.5 ± 20% mH (1kHz)																													
8. 转向（轴伸向看） Direction of rotation	A-AB-B-CW																													
9. 转动惯量 Rotor Inertia	30 g.cm²																													
10. 电机重量 Weight	0.22Kg																													
11. 绝缘等级 Insulation class	B Class																													
D	<div>减速比：1/51</div> <table border="1"><thead><tr><th colspan="3">UMot</th><th>视图 view</th><th>比例 inverse proportion</th><th colspan="2">重庆优摩特科技有限公司 Chongqing UMot technology Co.Ltd.</th></tr><tr><th>设计 INSPECTED</th><th>审核 CHECKED</th><th>批准 APPROVED</th><th>日期 Date</th><th>版本 Version</th><th>型号 Model</th><th>42HSC1409-42PG51J-200</th></tr></thead><tbody><tr><td></td><td></td><td></td><td></td><td>A0</td><td></td><td></td></tr></tbody></table>						UMot			视图 view	比例 inverse proportion	重庆优摩特科技有限公司 Chongqing UMot technology Co.Ltd.		设计 INSPECTED	审核 CHECKED	批准 APPROVED	日期 Date	版本 Version	型号 Model	42HSC1409-42PG51J-200					A0					
UMot			视图 view	比例 inverse proportion	重庆优摩特科技有限公司 Chongqing UMot technology Co.Ltd.																									
设计 INSPECTED	审核 CHECKED	批准 APPROVED	日期 Date	版本 Version	型号 Model	42HSC1409-42PG51J-200																								
				A0																										

Technical drawing of a motor assembly, showing dimensions, electrical specifications, and a winding diagram.

**Dimensions (mm):**

- Overall length: 52.5 ± 0.5
- Shaft diameter:  $\phi 42$
- Shaft length: 27
- Shaft diameter:  $\phi 10^{+0}_{-0.03}$
- Shaft diameter:  $\phi 26^{+0}_{-0.1}$
- Shaft diameter:  $\phi 7.5^{+0}_{-0.1}$
- Shaft diameter:  $\phi 4^{+0}_{-0}$
- Shaft diameter:  $\phi 35$
- Shaft diameter:  $\phi 3.5$
- Shaft diameter:  $\phi 5.5$
- Shaft diameter:  $\phi 20$
- Shaft diameter:  $\phi 31$
- Shaft diameter:  $\phi 42.3$
- Shaft diameter:  $\phi 31$
- Shaft diameter:  $\phi 200 \pm 10$

**Electrical Specifications:**

特性 character	规格 specifications
1. 相数 Number of phase	2
2. 步距角 Step Angle	1.8°
3. 额定电压 Rated Voltage	DC 2.93V
4. 额定电流 Rated current	DC 1.33A
5. 保持转矩 Holding Torque	≥ 270mN.m
6. 相电阻 Winding resistance	2.2 ± 15% ohm(20°C)
7. 相电感 Winding inductaoce	3.5 ± 20% mH (1kHz)
8. 转向 (轴伸向看) Direction of rotation	A-AB-B-CW
9. 转动惯量 Rotor Inertia	30 g.cm²
10. 电机重量 Weight	0.22Kg
11. 绝缘等级 Insulation class	B Class

**Winding Diagram:**

Electrical principle diagram (winding drawing) showing the motor (M) and its connections. The motor is connected to a power source (A) and a ground (C). The motor has two output terminals: B (RED) and D (BLU).

**Motor Model:** 42HSC1409-42PG51J-200

**Company:** 重庆优摩特科技有限公司 (Chongqing UMot technology Co.Ltd.)

**Version:** A0

**Scale:** 1:1

**View:** 视图 view

**Proportion:** 比例 inverse proportion

**Design:** 设计 INSPECTED

**Check:** 审核 CHECKED

**Approval:** 批准 APPROVED

**Date:** 日期 Date

**Version:** 版本 Version

**Model:** 型号 Model

**Marking:** 标记 REV

**Description:** 修改内容 Description

**Date:** 日期 Date

**Reduction Ratio:** 减速比: 1/51

	1	2	3	4	5	6																																								
A	符合RoHS指令要求 CONFORM TO RoHS DNSTROCTIONS																																													
B	<p>The technical drawing includes three main views:<ul style="list-style-type: none"><li><b>Side View:</b> Shows the motor's profile with dimensions: total length 52.5 ± 0.5 mm, mounting flange diameter Ø42 mm, and shaft diameter Ø10<sup>+0/-0.03</sup> mm. The mounting flange has a thickness of 27 mm and a central bore of 20 mm.</li><li><b>Front View:</b> Shows the circular motor frame with a diameter of 42.3 mm. It features four M4EQS screws with a depth of 10 min. The mounting holes have a diameter of Ø35 mm. The cable entry points are 4-Ø3.5 mm with a depth of Ø5.5 mm.</li><li><b>Winding Diagram:</b> Labeled "电气原理图 winding drawing", it shows the internal wiring connections between terminals A (BLK), B (RED), C (GRN), and D (BLU).</li></ul></p>																																													
C	<table border="1"><thead><tr><th>特性 character</th><th>规格 specifications</th></tr></thead><tbody><tr><td>1. 相数 Number of phase</td><td>2</td></tr><tr><td>2. 步距角 Step Angle</td><td>1.8°</td></tr><tr><td>3. 额定电压 Rated Voltage</td><td>DC 2.93V</td></tr><tr><td>4. 额定电流 Rated current</td><td>DC 1.33A</td></tr><tr><td>5. 保持转矩 Holding Torque</td><td>≥ 270mN.m</td></tr><tr><td>6. 相电阻 Winding resistance</td><td>2.2 ± 15% ohm(20℃)</td></tr><tr><td>7. 相电感 Winding inductaoce</td><td>3.5 ± 20% mH (1kHz)</td></tr><tr><td>8. 转向（轴伸向看） Direction of rotation</td><td>A-AB-B-CW</td></tr><tr><td>9. 转动惯量 Rotor Inertia</td><td>30 g.cm²</td></tr><tr><td>10. 电机重量 Weight</td><td>0.22Kg</td></tr><tr><td>11. 绝缘等级 Insulation class</td><td>B Class</td></tr></tbody></table> <p style="text-align: center;">减速比：1/51</p>						特性 character	规格 specifications	1. 相数 Number of phase	2	2. 步距角 Step Angle	1.8°	3. 额定电压 Rated Voltage	DC 2.93V	4. 额定电流 Rated current	DC 1.33A	5. 保持转矩 Holding Torque	≥ 270mN.m	6. 相电阻 Winding resistance	2.2 ± 15% ohm(20℃)	7. 相电感 Winding inductaoce	3.5 ± 20% mH (1kHz)	8. 转向（轴伸向看） Direction of rotation	A-AB-B-CW	9. 转动惯量 Rotor Inertia	30 g.cm²	10. 电机重量 Weight	0.22Kg	11. 绝缘等级 Insulation class	B Class																
特性 character	规格 specifications																																													
1. 相数 Number of phase	2																																													
2. 步距角 Step Angle	1.8°																																													
3. 额定电压 Rated Voltage	DC 2.93V																																													
4. 额定电流 Rated current	DC 1.33A																																													
5. 保持转矩 Holding Torque	≥ 270mN.m																																													
6. 相电阻 Winding resistance	2.2 ± 15% ohm(20℃)																																													
7. 相电感 Winding inductaoce	3.5 ± 20% mH (1kHz)																																													
8. 转向（轴伸向看） Direction of rotation	A-AB-B-CW																																													
9. 转动惯量 Rotor Inertia	30 g.cm²																																													
10. 电机重量 Weight	0.22Kg																																													
11. 绝缘等级 Insulation class	B Class																																													
D	<table border="1"><thead><tr><th colspan="4">UMot</th><th colspan="2">视图 view</th><th colspan="2">比例 inverse proportion</th><th colspan="2">重庆优摩特科技有限公司 Chongqing UMot technology Co.Ltd.</th></tr><tr><th colspan="4"></th><th colspan="2">1: 1</th><th colspan="2">A0</th><th colspan="2"></th></tr><tr><th>设计 INSPECTED</th><th>审核 CHECKED</th><th>批准 APPROVED</th><th>日期 Date</th><th>版本 Version</th><th>型号 Model</th><th colspan="4">42HSC1409-42PG51J-200</th></tr></thead><tbody><tr><td></td><td></td><td></td><td></td><td></td><td></td><td colspan="4"></td></tr></tbody></table>						UMot				视图 view		比例 inverse proportion		重庆优摩特科技有限公司 Chongqing UMot technology Co.Ltd.						1: 1		A0				设计 INSPECTED	审核 CHECKED	批准 APPROVED	日期 Date	版本 Version	型号 Model	42HSC1409-42PG51J-200													
UMot				视图 view		比例 inverse proportion		重庆优摩特科技有限公司 Chongqing UMot technology Co.Ltd.																																						
				1: 1		A0																																								
设计 INSPECTED	审核 CHECKED	批准 APPROVED	日期 Date	版本 Version	型号 Model	42HSC1409-42PG51J-200																																								

	1	2	3	4	5	6																								
A	符合RoHS指令要求 CONFORM TO RoHS DNSTROCTIONS																													
B	<p>The technical drawing includes three main views:<ul style="list-style-type: none"><li><b>Side View:</b> Shows the motor's profile with dimensions: total length 52.5 ± 0.5 mm, mounting flange diameter Ø42 mm, and shaft diameter Ø10<sup>+0.03</sup><sub>-0</sub> mm. The mounting flange has a thickness of 27 mm and a central bore of 20 mm.</li><li><b>Front View:</b> Shows the circular motor frame with a diameter of 42.3 mm. It features four M4EQS screws with a depth of 10 min. The mounting holes have a diameter of Ø35 mm. The cable entry points are 4-Ø3.5 mm with a depth of Ø5.5 mm.</li><li><b>Winding Diagram:</b> Labeled "电气原理图 winding drawing", it shows the internal wiring connections between terminals A (BLK), B (RED), C (GRN), and D (BLU).</li></ul></p>																													
C	<table border="1"><thead><tr><th>特性 character</th><th>规格 specifications</th></tr></thead><tbody><tr><td>1. 相数 Number of phase</td><td>2</td></tr><tr><td>2. 步距角 Step Angle</td><td>1.8°</td></tr><tr><td>3. 额定电压 Rated Voltage</td><td>DC 2.93V</td></tr><tr><td>4. 额定电流 Rated current</td><td>DC 1.33A</td></tr><tr><td>5. 保持转矩 Holding Torque</td><td>≥ 270mN.m</td></tr><tr><td>6. 相电阻 Winding resistance</td><td>2.2 ± 15% ohm(20℃)</td></tr><tr><td>7. 相电感 Winding inductaoce</td><td>3.5 ± 20% mH (1kHz)</td></tr><tr><td>8. 转向（轴伸向看） Direction of rotation</td><td>A-AB-B-CW</td></tr><tr><td>9. 转动惯量 Rotor Inertia</td><td>30 g.cm²</td></tr><tr><td>10. 电机重量 Weight</td><td>0.22Kg</td></tr><tr><td>11. 绝缘等级 Insulation class</td><td>B Class</td></tr></tbody></table>						特性 character	规格 specifications	1. 相数 Number of phase	2	2. 步距角 Step Angle	1.8°	3. 额定电压 Rated Voltage	DC 2.93V	4. 额定电流 Rated current	DC 1.33A	5. 保持转矩 Holding Torque	≥ 270mN.m	6. 相电阻 Winding resistance	2.2 ± 15% ohm(20℃)	7. 相电感 Winding inductaoce	3.5 ± 20% mH (1kHz)	8. 转向（轴伸向看） Direction of rotation	A-AB-B-CW	9. 转动惯量 Rotor Inertia	30 g.cm²	10. 电机重量 Weight	0.22Kg	11. 绝缘等级 Insulation class	B Class
特性 character	规格 specifications																													
1. 相数 Number of phase	2																													
2. 步距角 Step Angle	1.8°																													
3. 额定电压 Rated Voltage	DC 2.93V																													
4. 额定电流 Rated current	DC 1.33A																													
5. 保持转矩 Holding Torque	≥ 270mN.m																													
6. 相电阻 Winding resistance	2.2 ± 15% ohm(20℃)																													
7. 相电感 Winding inductaoce	3.5 ± 20% mH (1kHz)																													
8. 转向（轴伸向看） Direction of rotation	A-AB-B-CW																													
9. 转动惯量 Rotor Inertia	30 g.cm²																													
10. 电机重量 Weight	0.22Kg																													
11. 绝缘等级 Insulation class	B Class																													
D	<div>减速比：1/51</div> <table border="1"><thead><tr><th colspan="3">UMot</th><th>视图 view</th><th>比例 inverse proportion</th><th colspan="2">重庆优摩特科技有限公司 Chongqing UMot technology Co.Ltd.</th></tr><tr><th>设计 INSPECTED</th><th>审核 CHECKED</th><th>批准 APPROVED</th><th>日期 Date</th><th>版本 Version</th><th>型号 Model</th><th>42HSC1409-42PG51J-200</th></tr></thead><tbody><tr><td></td><td></td><td></td><td></td><td>A0</td><td></td><td></td></tr></tbody></table>						UMot			视图 view	比例 inverse proportion	重庆优摩特科技有限公司 Chongqing UMot technology Co.Ltd.		设计 INSPECTED	审核 CHECKED	批准 APPROVED	日期 Date	版本 Version	型号 Model	42HSC1409-42PG51J-200					A0					
UMot			视图 view	比例 inverse proportion	重庆优摩特科技有限公司 Chongqing UMot technology Co.Ltd.																									
设计 INSPECTED	审核 CHECKED	批准 APPROVED	日期 Date	版本 Version	型号 Model	42HSC1409-42PG51J-200																								
				A0																										

	1	2	3	4	5	6																								
A	符合RoHS指令要求 CONFORM TO RoHS DNSTROCTIONS																													
B	<p>The technical drawing includes three main views:<ul style="list-style-type: none"><li><b>Side View:</b> Shows the motor's profile with dimensions: total length 52.5 ± 0.5 mm, mounting flange diameter Ø42 mm, and shaft diameter Ø10<sup>+0/-0.03</sup> mm. The mounting flange has a thickness of 27 mm and a central bore of 20 mm.</li><li><b>Front View:</b> Shows the circular motor frame with a diameter of 42.3 mm. It features four M4EQS screws with a depth of 10 min. The mounting holes have a diameter of Ø35 mm. The cable exit is at the bottom center, with a cable diameter of 4-Ø3.5 mm and a hole diameter of Ø5.5 mm. The cable length is 200 ± 10 mm.</li><li><b>Winding Diagram:</b> Labeled "电气原理图 winding drawing". It shows a three-phase motor circuit with terminals A (BLK), B (RED), C (GRN), and D (BLU). The motor is represented by a circle with 'M' inside.</li></ul></p>																													
C	<table border="1"><thead><tr><th>特性 character</th><th>规格 specifications</th></tr></thead><tbody><tr><td>1. 相数 Number of phase</td><td>2</td></tr><tr><td>2. 步距角 Step Angle</td><td>1.8°</td></tr><tr><td>3. 额定电压 Rated Voltage</td><td>DC 2.93V</td></tr><tr><td>4. 额定电流 Rated current</td><td>DC 1.33A</td></tr><tr><td>5. 保持转矩 Holding Torque</td><td>≥ 270mN.m</td></tr><tr><td>6. 相电阻 Winding resistance</td><td>2.2 ± 15% ohm(20℃)</td></tr><tr><td>7. 相电感 Winding inductaoce</td><td>3.5 ± 20% mH (1kHz)</td></tr><tr><td>8. 转向（轴伸向看） Direction of rotation</td><td>A-AB-B-CW</td></tr><tr><td>9. 转动惯量 Rotor Inertia</td><td>30 g.cm²</td></tr><tr><td>10. 电机重量 Weight</td><td>0.22Kg</td></tr><tr><td>11. 绝缘等级 Insulation class</td><td>B Class</td></tr></tbody></table>						特性 character	规格 specifications	1. 相数 Number of phase	2	2. 步距角 Step Angle	1.8°	3. 额定电压 Rated Voltage	DC 2.93V	4. 额定电流 Rated current	DC 1.33A	5. 保持转矩 Holding Torque	≥ 270mN.m	6. 相电阻 Winding resistance	2.2 ± 15% ohm(20℃)	7. 相电感 Winding inductaoce	3.5 ± 20% mH (1kHz)	8. 转向（轴伸向看） Direction of rotation	A-AB-B-CW	9. 转动惯量 Rotor Inertia	30 g.cm²	10. 电机重量 Weight	0.22Kg	11. 绝缘等级 Insulation class	B Class
特性 character	规格 specifications																													
1. 相数 Number of phase	2																													
2. 步距角 Step Angle	1.8°																													
3. 额定电压 Rated Voltage	DC 2.93V																													
4. 额定电流 Rated current	DC 1.33A																													
5. 保持转矩 Holding Torque	≥ 270mN.m																													
6. 相电阻 Winding resistance	2.2 ± 15% ohm(20℃)																													
7. 相电感 Winding inductaoce	3.5 ± 20% mH (1kHz)																													
8. 转向（轴伸向看） Direction of rotation	A-AB-B-CW																													
9. 转动惯量 Rotor Inertia	30 g.cm²																													
10. 电机重量 Weight	0.22Kg																													
11. 绝缘等级 Insulation class	B Class																													
D	<div>减速比：1/51</div> <table border="1"><thead><tr><th colspan="3">UMot</th><th>视图 view</th><th>比例 inverse proportion</th><th colspan="2">重庆优摩特科技有限公司 Chongqing UMot technology Co.Ltd.</th></tr><tr><th>设计 INSPECTED</th><th>审核 CHECKED</th><th>批准 APPROVED</th><th>日期 Date</th><th>版本 Version</th><th>型号 Model</th><th>42HSC1409-42PG51J-200</th></tr></thead><tbody><tr><td></td><td></td><td></td><td></td><td>A0</td><td></td><td></td></tr></tbody></table>						UMot			视图 view	比例 inverse proportion	重庆优摩特科技有限公司 Chongqing UMot technology Co.Ltd.		设计 INSPECTED	审核 CHECKED	批准 APPROVED	日期 Date	版本 Version	型号 Model	42HSC1409-42PG51J-200					A0					
UMot			视图 view	比例 inverse proportion	重庆优摩特科技有限公司 Chongqing UMot technology Co.Ltd.																									
设计 INSPECTED	审核 CHECKED	批准 APPROVED	日期 Date	版本 Version	型号 Model	42HSC1409-42PG51J-200																								
				A0																										

<