

减速步进电机

专心/专业/专注

选型手册

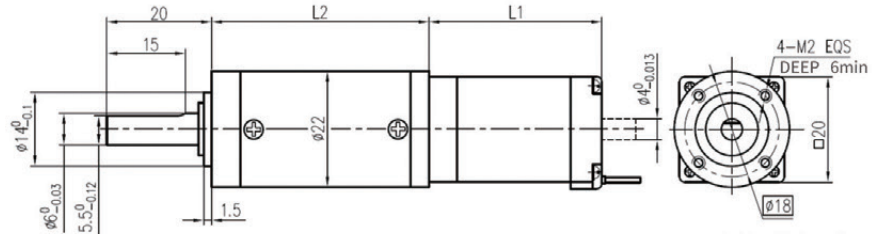
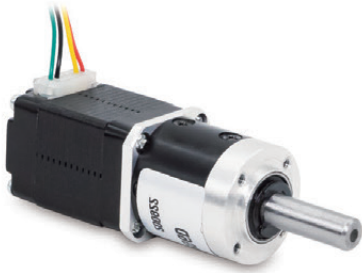
GEARED STEPPER MOTOR SELECTION MANUAL

CHONGQING UMOT TECHNOLOGY CO.,LTD

重庆优摩特科技有限公司

20系列电机 20mm series gear stepper motor

减速机安装尺寸:
Gear Stepping Motor Installation Dimensions

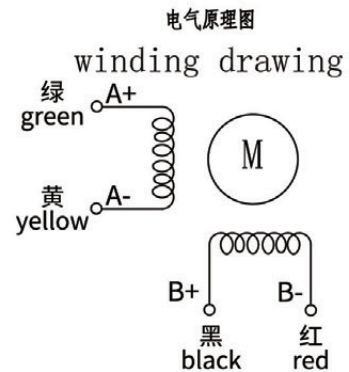


EQS: 安装孔均匀分布

输出转矩: 0.6N.m~2.0N.m
Load Range: 0.6N.m~2.0N.m

行星齿轮减速器参数 Planetary Gearbox

内齿圈材料 Ring material	金属 Metal
输出轴轴承形式 Bearing at output	滚动轴承 Ball bearings
最大允许径向负载 (离法兰 10mm 处) Max. Radial load (10mm from flange)	50N
最大允许轴向负载 Max. shaft axial load	30N
径向间隙 (测量点尽量接近法兰) Radial play of shaft (near to flange)	≤0.08 mm
轴向间隙 Axial play of shaft	≤0.3 mm
背隙 (无负载时) Backlash at no-load	1级 ≤1°, 2级 ≤1.2°, 3级 ≤1.5°



20HS 混合式步进电机性能 20HS Hybrid Stepping Motor Specifications

Model No.	额定电压 Rated Voltage	每相电流 Current /Phase	每相电阻 Resistance /Phase	每相电感 Inductance /Phase	保持转矩 Holding Torque	引出线数 # of Leads	转动惯量 Rotor Inertia	重量 Weight	长度 L1 Length L1	适配减速比 Max. Gear Ratio
单轴 Single Shaft	V	A	Ω	mH	m.Nm		g-cm ²	kg	mm	
20HS1405	3.25	0.5	6.5	1.5	15	4	2	0.06	30	≤1:369
20HS6401	4.40	0.8	5.5	1.5	30	4	3	0.10	41	≤1:369

减速电机性能参数(20HS1405) Planetary Gearbox Specifications

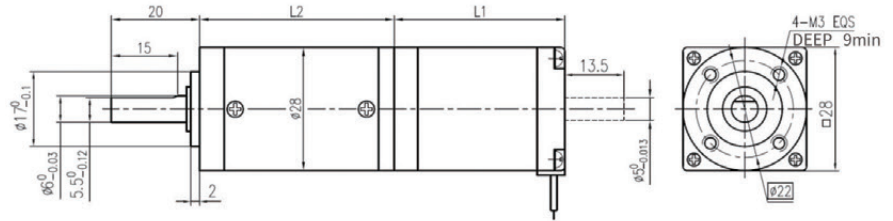
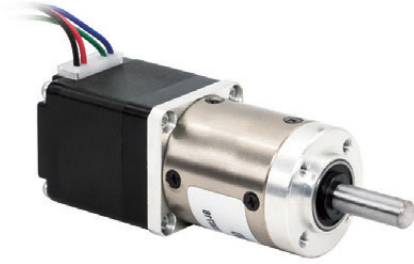
减速比 Reduction ratio	3.71	5.18	14	19	27	51	71	100	139	189	264	369
减速电机总高度 (L1+L2) mm	53.4	53.4	60	60	60	66.4	66.4	66.4	66.4	72.8	72.8	72.8
减速电机输出扭矩 (mN.m)	50	70	170	231	328	558	777	1095	1522	1871	2000	2000
减速电机总重量 (g)	91	91	97	97	97	103	103	103	103	109	109	109
减速级数 Number of gear trains	1			2			3			4		
减速器长度(L2) Length(L2) mm	23.4			30.0			36.4			42.8		
效率 Efficiency	90%			81%			73%			66%		

减速电机性能参数(20HS6401) Planetary Gearbox Specifications

减速比 Reduction ratio	3.71	5.18	14	19	27	51	71	100	139	189	264	369
减速电机总高度 (L1+L2) mm	64.4	64.4	71	71	71	77.4	77.4	77.4	77.4	83.8	83.8	83.8
减速电机输出扭矩 (mN.m)	100	140	340	462	656	1117	1555	2000	2000	2000	2000	2000
减速电机总重量 (g)	131	131	137	137	137	143	143	143	143	149	149	149
减速级数 Number of gear trains	1			2			3			4		
减速器长度(L2) Length(L2) mm	23.4			30.0			36.4			42.8		
效率 Efficiency	90%			81%			73%			66%		

28系列电机 28mm series gear stepper motor

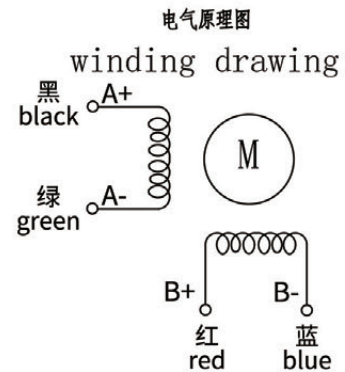
减速机安装尺寸:
Gear Stepping Motor Installation Dimensions



输出转矩: 1.2N.m~4.0N.m
Load Range: 1.2N.m~4.0N.m

行星齿轮减速器参数 Planetary Gearbox

内齿圈材料 Ring material	金属 Metal
输出轴轴承形式 Bearing at output	滚动轴承 Ball bearings
最大允许径向负载 (离法兰 10mm 处) Max. Radial load (10mm from flange)	100N
最大允许轴向负载 Max. shaft axial load	50N
径向间隙 (测量点尽量接近法兰) Radial play of shaft (near to flange)	≤0.07mm
轴向间隙 Axial play of shaft	≤0.3 mm
背隙 (无负载时) Backlash at no-load	1 级 ≤1°, 2 级 ≤1.2°, 3 级 ≤1.5°



28HS 混合式步进电机性能 28HS Hybrid Stepping Motor Specifications

Model No.	额定电压 Rated Voltage	每相电流 Current /Phase	每相电阻 Resistance /Phase	每相电感 Inductance /Phase	保持转矩 Holding Torque	引出线数 # of Leads	转动惯量 Rotor Inertia	重量 Weight	长度 L1 Length L1	适配减速比 Max. Gear Ratio
单轴 Single Shaft	V	A	Ω	mH	m.Nm		g-cm ²	kg	mm	
28HS5401	4.9	0.7	7	5	95	4	28	0.2	45	≤1:369
28HS7401	6.03	0.67	9	7	110	4	45	0.25	52	≤1:369

减速电机性能参数(28HS5401) Planetary Gearbox Specifications

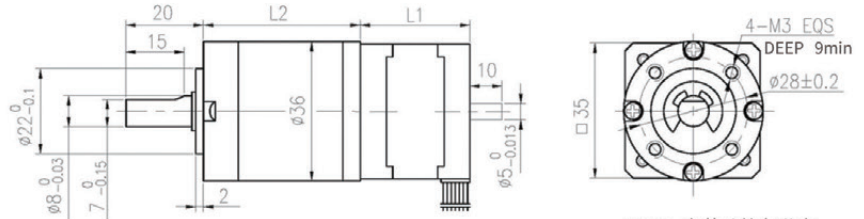
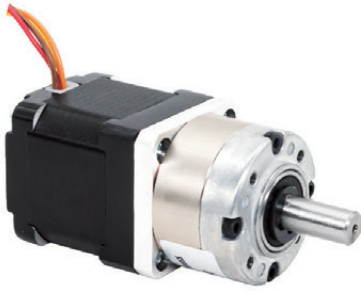
减速比 Reduction ratio	3.71	5.18	14	19	27	51	71	100	139	189	264	369
减速电机总高度 (L1+L2) mm	74	74	81.1	81.1	81.1	88	88	88	88	94.9	94.9	94.9
减速电机输出扭矩 (mN.m)	317	443	1077	1462	2000	3537	4000	4000	4000	4000	4000	4000
减速电机总重量 (g)	275	275	297	297	297	319	319	319	319	341	341	341
减速级数 Number of gear trains	1		2			3			4			
减速器长度(L2) Length(L2) mm	29.0		36.1			43.0			49.9			
效率 Efficiency	90%		81%			73%			66%			

减速电机性能参数(28HS7401) Planetary Gearbox Specifications

减速比 Reduction ratio	3.71	5.18	14	19	27	51	71	100	139	189	264	369
减速电机总高度 (L1+L2) mm	81	81	88.1	88.1	88.1	95	95	95	95	101.9	101.9	101.9
减速电机输出扭矩 (mN.m)	367	513	1247	1693	2000	4000	4000	4000	4000	4000	4000	4000
减速电机总重量 (g)	325	325	347	347	347	369	369	369	369	391	391	391
减速级数 Number of gear trains	1		2			3			4			
减速器长度(L2) Length(L2) mm	29.0		36.1			43.0			49.9			
效率 Efficiency	90%		81%			73%			66%			

35系列电机 35mm series gear stepper motor

减速机安装尺寸:
Gear Stepping Motor Installation Dimensions

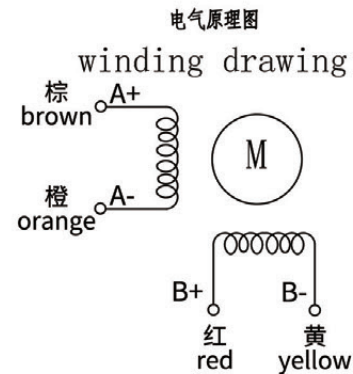


EQS: 安装孔均匀分布

输出转矩: 1.8N.m~6.0N.m
Load Range: 1.8N.m~6.0N.m

行星齿轮减速器参数 Planetary Gearbox

内齿圈材料 Ring material	金属 Metal
输出轴轴承形式 Bearing at output	滚动轴承 Ball bearings
最大允许径向负载 (离法兰 10mm 处) Max. Radial load (10mm from flange)	100N
最大允许轴向负载 Max. shaft axial load	50N
径向间隙 (测量点尽量接近法兰) Radial play of shaft (near to flange)	≤0.07mm
轴向间隙 Axial play of shaft	≤0.3 mm
背隙 (无负载时) Backlash at no-load	1级 ≤1°, 2级 ≤1.2°, 3级 ≤1.5°



35HS 混合式步进电机性能 35HS Hybrid Stepping Motor Specifications

Model No.	额定电压 Rated Voltage	每相电流 Current /Phase	每相电阻 Resistance /Phase	每相电感 Inductance /Phase	保持转矩 Holding Torque	引出线数 # of Leads	转动惯量 Rotor Inertia	重量 Weight	长度 L1 Length L1	适配减速比 Max. Gear Ratio
单轴 Single Shaft	V	A	Ω	mH	m.Nm		g-cm2	kg	mm	
35HSH2408	4.5	1.0	4.5	5.5	200	4	25	0.15	28	≤1:139
35HSH5401	4.5	1.0	4.5	7	250	4	35	0.25	38.5	≤1:139

减速电机性能参数(35HSH2408) Planetary Gearbox Specifications

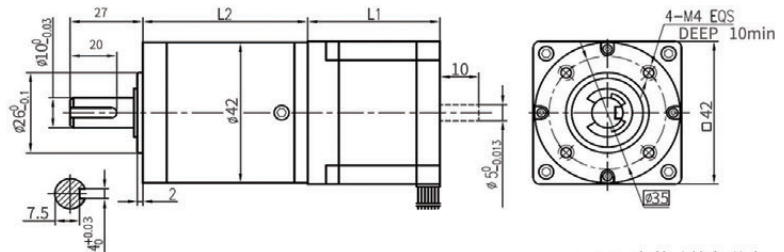
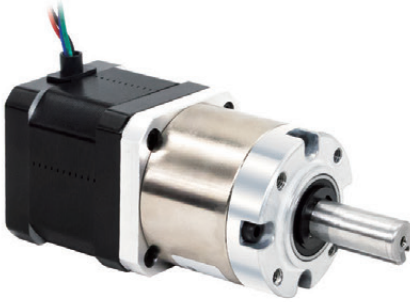
减速比 Reduction ratio	3.71	5.18	14	19	27	51	71	100	139
减速电机总高度 (L1+L2) mm	55	55	62.2	62.2	62.2	69.1	69.1	69.1	69.1
减速电机输出扭矩 (mN.m)	668	932	2268	3000	3000	6000	6000	6000	6000
减速电机总重量 (g)	284	284	323	323	323	362	362	362	362
减速级数 Number of gear trains	1		2			3			
减速器长度(L2) Length(L2) mm	27		34.2			41.1			
效率 Efficiency	90%		81%			73%			

减速电机性能参数(35HSH5401) Planetary Gearbox Specifications

减速比 Reduction ratio	3.71	5.18	14	19	27	51	71	100	139
减速电机总高度 (L1+L2) mm	65.5	65.5	72.7	72.7	72.7	79.6	79.6	79.6	79.6
减速电机输出扭矩 (mN.m)	835	1166	2835	3000	3000	6000	6000	6000	6000
减速电机总重量 (g)	384	384	423	423	423	462	462	462	462
减速级数 Number of gear trains	1		2			3			
减速器长度(L2) Length(L2) mm	27		34.2			41.1			
效率 Efficiency	90%		81%			73%			

42系列电机 42mm series gear stepper motor

减速机安装尺寸:
Gear Stepping Motor Installation Dimensions

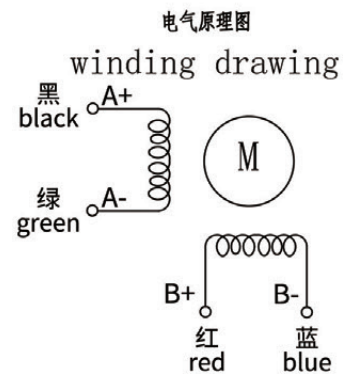


EQS: 安装孔均匀分布

输出转矩: 3.0N.m~10.0N.m
Load Range: 3.0N.m~10.0N.m

行星齿轮减速器参数 Planetary Gearbox

内齿圈材料 Ring material	金属 Metal
输出轴轴承形式 Bearing at output	滚动轴承 Ball bearings
最大允许径向负载 (离法兰 10mm 处) Max. Radial load (10mm from flange)	200N
最大允许轴向负载 Max. shaft axial load	100N
径向间隙 (测量点尽量接近法兰) Radial play of shaft (near to flange)	≤0.06mm
轴向间隙 Axial play of shaft	≤0.3 mm
背隙 (无负载时) Backlash at no-load	1 级 ≤1°, 2 级 ≤1.2°, 3 级 ≤1.5°



42HS 混合式步进电机性能 42HS Hybrid Stepping Motor Specifications

Model No.	额定电压 Rated Voltage	每相电流 Current /Phase	每相电阻 Resistance /Phase	每相电感 Inductance /Phase	保持转矩 Holding Torque	引出线数 # of Leads	转动惯量 Rotor Inertia	重量 Weight	长度 L1 Length L1	适配减速比 Max. Gear Ratio
单轴 Single Shaft	V	A	Ω	mH	m.Nm		g-cm ²	kg	mm	
42HSC1409	2.93	1.33	2.2	3.5	270	4	30	0.22	34	≤1:369
42HSC4409	2.5	1.5	1.65	3.3	380	4	40	0.3	40	≤1:369

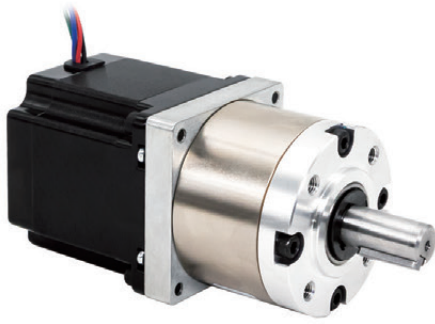
减速电机性能参数(42HSC1409) Planetary Gearbox Specifications

减速比 Reduction ratio	3.71	5.18	14	19	27	51	71	100	139	189	264	369
减速电机总高度 (L1+L2) mm	65.5	65.5	76.1	76.1	76.1	86.5	86.5	86.5	86.5	96.9	96.9	96.9
减速电机输出扭矩 (mN.m)	902	1259	3062	4155	5000	10000	10000	10000	10000	10000	10000	10000
减速电机总重量 (g)	428	428	510	510	510	592	592	592	592	674	674	674
减速级数 Number of gear trains	1		2			3			4			
减速器长度(L2) Length(L2) mm	31.5		42.1			52.5			62.9			
效率 Efficiency	90%		81%			73%			66%			

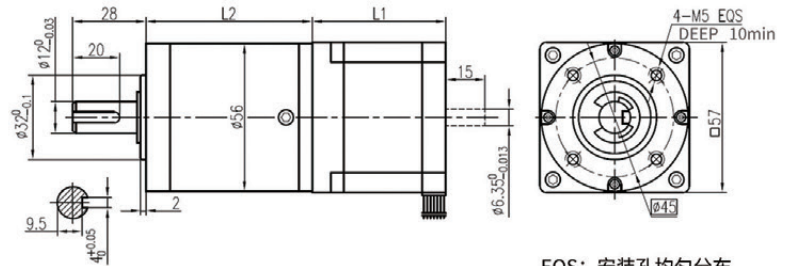
减速电机性能参数(42HSC4409) Planetary Gearbox Specifications

减速比 Reduction ratio	3.71	5.18	14	19	27	51	71	100	139	189	264	369
减速电机总高度 (L1+L2) mm	71.5	71.5	82.1	82.1	82.1	92.5	92.5	92.5	92.5	102.9	102.9	102.9
减速电机输出扭矩 (mN.m)	1269	1772	4309	5000	5000	10000	10000	10000	10000	10000	10000	10000
减速电机总重量 (g)	508	508	590	590	590	672	672	672	672	754	754	754
减速级数 Number of gear trains	1		2			3			4			
减速器长度(L2) Length(L2) mm	31.5		42.1			52.5			62.9			
效率 Efficiency	90%		81%			73%			66%			

57系列电机 57mm series gear stepper motor



减速机安装尺寸:
Gear Stepping Motor Installation Dimensions

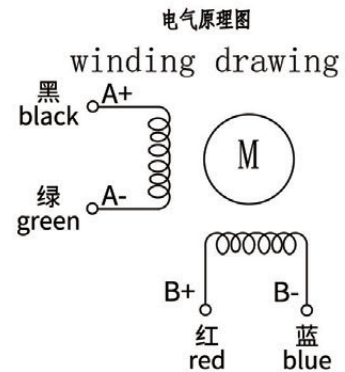


EQS: 安装孔均匀分布

输出转矩: 9.0N.m~30.0N.m
Load Range: 9.0N.m~30.0N.m

行星齿轮减速器参数 Planetary Gearbox

内齿圈材料 Ring material	金属 Metal
输出轴轴承形式 Bearing at output	滚动轴承 Ball bearings
最大允许径向负载 (离法兰 10mm 处) Max. Radial load (10mm from flange)	300N
最大允许轴向负载 Max. shaft axial load	200N
径向间隙 (测量点尽量接近法兰) Radial play of shaft (near to flange)	≤0.08mm
轴向间隙 Axial play of shaft	≤0.4mm
背隙 (无负载时) Backlash at no-load	1级 ≤1°, 2级 ≤1.2°, 3级 ≤1.5°



57HS 混合式步进电机性能 57HS Hybrid Stepping Motor Specifications

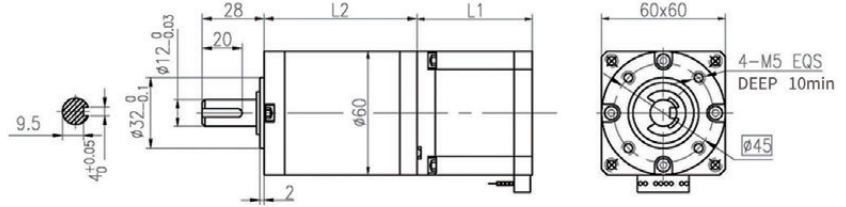
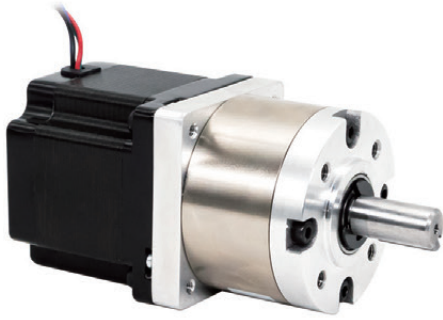
Model No.	额定电压 Rated Voltage	每相电流 Current /Phase	每相电阻 Resistance /Phase	每相电感 Inductance /Phase	保持转矩 Holding Torque	引出线数 # of Leads	转动惯量 Rotor Inertia	重量 Weight	长度 L1 Length L1	适配减速比 Max. Gear Ratio
单轴 Single Shaft	V	A	Ω	mH	m.Nm		g-cm ²	kg	mm	
57HS5417	1.7	2.0	0.85	2.5	950	4	200	0.64	55	≤1:187

减速电机性能参数(57HS5417) Planetary Gearbox Specifications

减速比 Reduction ratio	3.6	4.25	13	15	18	23	47	55	65	77	96	121	153	187
减速电机总高度 (L1+L2) mm	92.8	92.8	104.4	104.4	104.4	104.4	115.8	115.8	115.8	115.8	115.8	115.8	126.9	126.9
减速电机输出扭矩 (mN.m)	3078	3634	10004	11543	13851	15000	30000	30000	30000	30000	30000	30000	30000	30000
减速电机总重量 (g)	1095	1095	1250	1250	1250	1250	1405	1405	1405	1405	1405	1405	1560	1560
减速级数 Number of gear trains	1			2			3			4				
减速器长度(L2) Length(L2) mm	37.8			49.4			60.8			71.9				
效率 Efficiency	90%			81%			73%			66%				

60系列电机 60mm series gear stepper motor

减速机安装尺寸:
Gear Stepping Motor Installation Dimensions

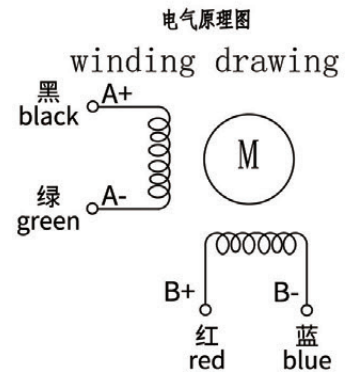


EQS: 安装孔均匀分布

输出转矩: 9.0N.m~30.0N.m
Load Range: 9.0N.m~30.0N.m

行星齿轮减速器参数 Planetary Gearbox

内齿圈材料 Ring material	金属 Metal
输出轴轴承形式 Bearing at output	滚动轴承 Ball bearings
最大允许径向负载 (离法兰 10mm 处) Max. Radial load (10mm from flange)	300N
最大允许轴向负载 Max. shaft axial load	200N
径向间隙 (测量点尽量接近法兰) Radial play of shaft (near to flange)	≤0.08mm
轴向间隙 Axial play of shaft	≤0.4mm
背隙 (无负载时) Backlash at no-load	1 级 ≤1°, 2 级 ≤1.2°, 3 级 ≤1.5°



60HS 混合式步进电机性能 60HS Hybrid Stepping Motor Specifications

Model No.	额定电压 Rated Voltage	每相电流 Current /Phase	每相电阻 Resistance /Phase	每相电感 Inductance /Phase	保持转矩 Holding Torque	引出线数 # of Leads	转动惯量 Rotor Inertia	重量 Weight	长度 L1 Length L1	适配减速比 Max. Gear Ratio
单轴 Single Shaft	V	A	Ω	mH	m.Nm		g-cm ²	kg	mm	
60HS5405	2.98	3.5	0.85	3	1900	4	300	0.7	55	≤1:187

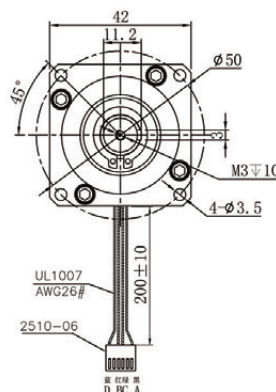
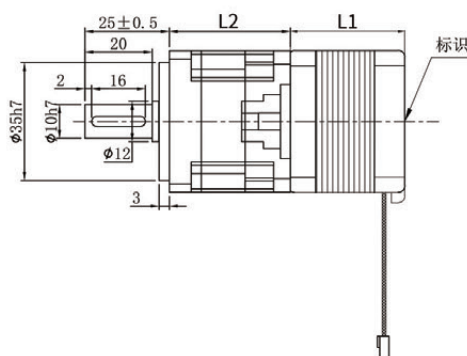
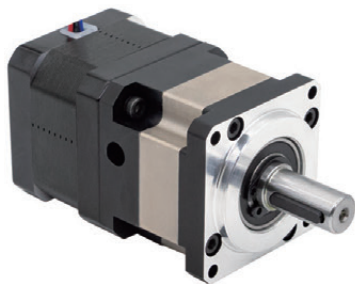
减速电机性能参数(60HS5405) Planetary Gearbox Specifications

减速比 Reduction ratio	3.6	4.25	13	15	18	23	47	55	65	77	96	121	153	187
减速电机总高度 (L1+L2) mm	92.8	92.8	104.4	104.4	104.4	104.4	115.8	115.8	115.8	115.8	115.8	115.8	126.9	126.9
减速电机输出扭矩 (mN.m)	6156	7268	15000	15000	15000	15000	30000	30000	30000	30000	30000	30000	30000	30000
减速电机总重量 (g)	1200	1200	1388	1388	1388	1388	1576	1576	1576	1576	1576	1576	1620	1620
减速级数 Number of gear trains	1		2				3				4			
减速器长度(L2) Length(L2) mm	37.8		49.4				60.8				71.9			
效率 Efficiency	90%		81%				73%				66%			

42方形精密级电机 42mm square precision motor

减速机安装尺寸:

Gear Stepping Motor Installation Dimensions

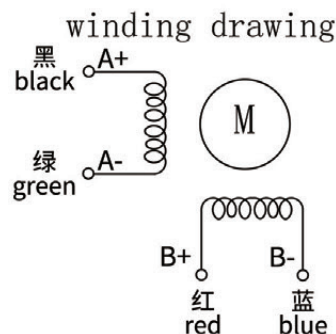


输出转矩: 5.0N.m~12.0N.m
Load Range: 5.0N.m~12.0N.m

行星齿轮减速器参数 Planetary Gearbox

内齿圈材料 Ring material	金属 Metal
输出轴轴承形式 Bearing at output	滚动轴承 Ball bearings
最大允许径向负载 (离法兰 10mm 处) Max. Radial load (10mm from flange)	300N
最大允许轴向负载 Max. shaft axial load	100N
背隙 (无负载时) Backlash at no-load	1 级 ≤ 15', 2 级 ≤ 20'

电气原理图



42HS 混合式步进电机性能 42HS Hybrid Stepping Motor Specifications

Model No.	额定电压 Rated Voltage	每相电流 Current /Phase	每相电阻 Resistance /Phase	每相电感 Inductance /Phase	保持转矩 Holding Torque	引出线数 # of Leads	转动惯量 Rotor Inertia	重量 Weight	长度 L1 Length L1	适配减速比 Max. Gear Ratio
单轴 Single Shaft	V	A	Ω	mH	m.Nm		g-cm ²	kg	mm	
42HSC1409	2.93	1.3	2.2	3.5	270	4	30	0.22	34	≤1:100
42HSC4409	2.5	1.5	1.65	3.3	380	4	40	0.3	40	≤1:100

减速电机性能参数(42HSC1409) Planetary Gearbox Specifications

减速比 Reduction ratio	4	5	7	10	16	20	25	28	35	40	50	70
减速电机总高度 (L1+L2) mm	69	69	69	69	80	80	80	80	80	80	80	80
减速电机输出扭矩 (mN.m)	1036	1296	1814	2592	4060	5076	6345	7106	8883	10000	10000	10000
减速电机总重量 (g)	470	470	470	470	570	570	570	570	570	570	570	570
减速级数 Number of gear trains	1				2							
减速器长度(L2) Length(L2) mm	35				46							
效率 Efficiency	96%				94%							

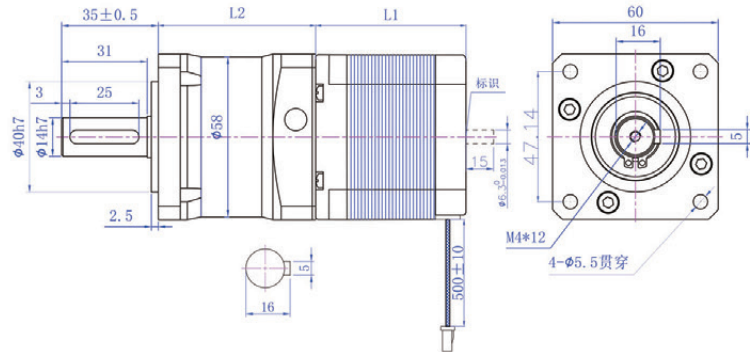
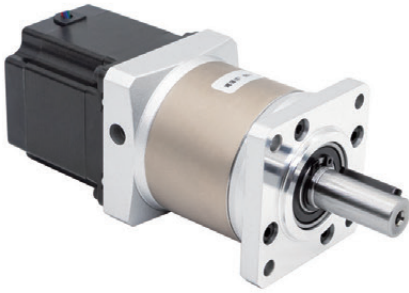
减速电机性能参数(42HSC4409) Planetary Gearbox Specifications

减速比 Reduction ratio	4	5	7	10	16	20	25	28	35	40	50	70
减速电机总高度 (L1+L2) mm	75	75	75	75	86	86	86	86	86	86	86	86
减速电机输出扭矩 (mN.m)	1459	1824	2553	3648	5715	7144	8930	10000	10000	10000	10000	10000
减速电机总重量 (g)	550	550	550	550	650	650	650	650	650	650	650	650
减速级数 Number of gear trains	1				2							
减速器长度(L2) Length(L2) mm	35				46							
效率 Efficiency	96%				94%							

57精密级系列电机 57mm precision motor series

减速机安装尺寸:

Gear Stepping Motor Installation Dimensions

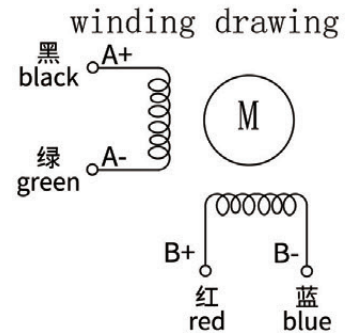


输出转矩: 10.0N.m~32.0N.m
Load Range: 10.0N.m~32.0N.m

行星齿轮减速器参数 Planetary Gearbox

内齿圈材料 Ring material	金属 Metal
输出轴轴承形式 Bearing at output	滚动轴承 Ball bearings
最大允许径向负载 (离法兰 10mm 处) Max. Radial load (10mm from flange)	450N
最大允许轴向负载 Max. shaft axial load	300N
背隙 (无负载时) Backlash at no-load	1 级 ≤ 15', 2 级 ≤ 20'

电气原理图



57HS 混合式步进电机性能 57HS Hybrid Stepping Motor Specifications

Model No.	额定电压 Rated Voltage	每相电流 Current /Phase	每相电阻 Resistance /Phase	每相电感 Inductance /Phase	保持转矩 Holding Torque	引出线数 # of Leads	转动惯量 Rotor Inertia	重量 Weight	长度 L1 Length L1	适配减速比 Max. Gear Ratio
单轴 Single Shaft	V	A	Ω	mH	m.Nm		g-cm ²	kg	mm	
57HS5417	1.7	2.0	0.85	2.5	950	4	200	0.64	55	≤1:70

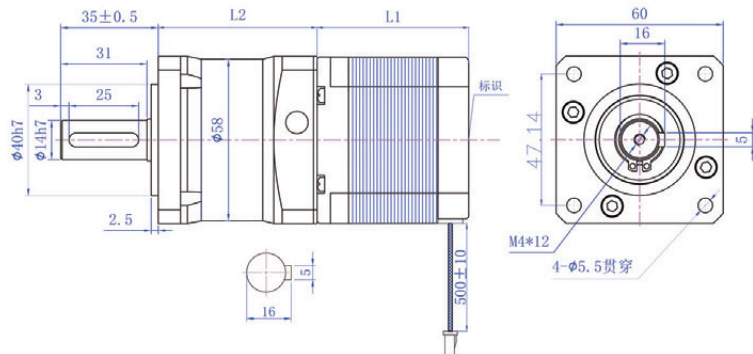
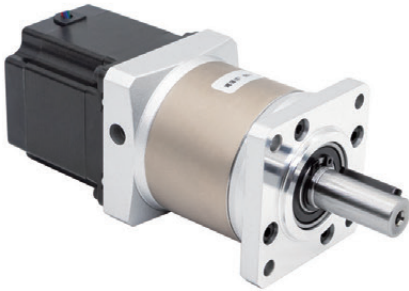
减速电机性能参数(57HS5417) Planetary Gearbox Specifications

减速比 Reduction ratio	4	5	7	10	16	20	25	28	35	40	50	70
减速电机总高度 (L1+L2) mm	112	112	112	112	128	128	128	128	128	128	128	128
减速电机输出扭矩 (mN.m)	3648	4560	6384	9120	14288	17860	22325	25004	30000	25000	25000	20000
减速电机总重量 (g)	1360	1360	1360	1360	1590	1590	1590	1590	1590	1590	1590	1590
减速级数 Number of gear trains	1						2					
减速器长度(L2) Length(L2) mm	57						73					
效率 Efficiency	96%						94%					

60精密级系列电机 60mm precision motor series

减速机安装尺寸:

Gear Stepping Motor Installation Dimensions

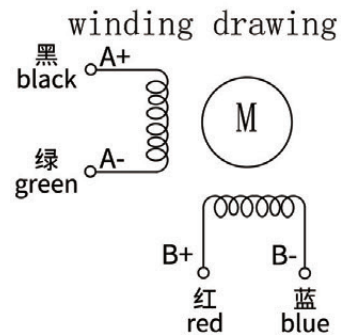


输出转矩: 10.0N.m~32.0N.m
Load Range: 10.0N.m~32.0N.m

行星齿轮减速器参数 Planetary Gearbox

内齿圈材料 Ring material	金属 Metal
输出轴轴承形式 Bearing at output	滚动轴承 Ball bearings
最大允许径向负载 (离法兰 10mm 处) Max. Radial load (10mm from flange)	450N
最大允许轴向负载 Max. shaft axial load	300N
背隙 (无负载时) Backlash at no-load	1 级 ≤ 15'、2 级 ≤ 20'

电气原理图



60HS 混合式步进电机性能 60HS Hybrid Stepping Motor Specifications

Model No.	额定电压 Rated Voltage	每相电流 Current /Phase	每相电阻 Resistance /Phase	每相电感 Inductance /Phase	保持转矩 Holding Torque	引出线数 # of Leads	转动惯量 Rotor Inertia	重量 Weight	长度 L1 Length L1	适配减速比 Max. Gear Ratio
单轴 Single Shaft	V	A	Ω	mH	m.Nm		g-cm ²	kg	mm	
60HS5405	2.98	3.5	0.85	3	1900	4	300	0.7	55	≤1:70

减速电机性能参数(60HS5405) Planetary Gearbox Specifications

减速比 Reduction ratio	4	5	7	10	16	20	25	28	35	40	50	70
减速电机总高度 (L1+L2) mm	112	112	112	112	128	128	128	128	128	128	128	128
减速电机输出扭矩 (mN.m)	7296	9120	12768	10000	28576	30000	32000	30000	30000	25000	25000	20000
减速电机总重量 (g)	1420	1420	1420	1420	1650	1650	1650	1650	1650	1650	1650	1650
减速级数 Number of gear trains	1						2					
减速器长度(L2) Length(L2) mm	57						73					
效率 Efficiency	96%						94%					

42蜗轮蜗杆系列电机 42mm worm gear series motor



输出转矩: 1.0N.m~5.0N.m
Load Range: 1.0N.m~5.0N.m

蜗轮蜗杆减速器参数 Worm gear reducer parameters

蜗轮蜗杆材料 Worm gear material	纯铜
最大允许径向负载 (离法兰 10mm 处) Max. Radial load (10mm from flange)	200N
最大允许轴向负载 Max. shaft axial load	100N
背隙 (无负载时) Backlash at no-load	1°~1.5°

42HS 混合式步进电机性能 42HS Hybrid Stepping Motor Specifications

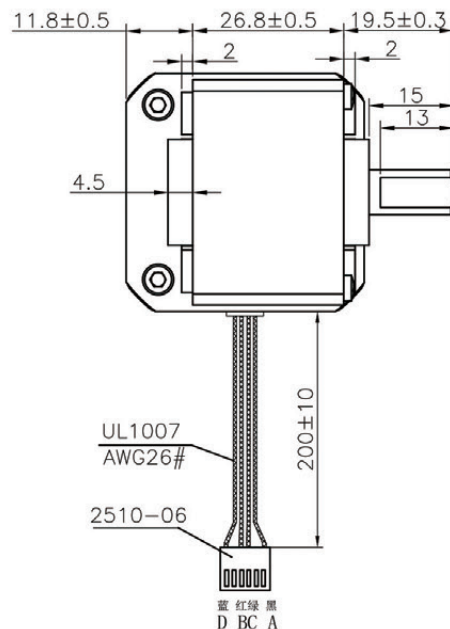
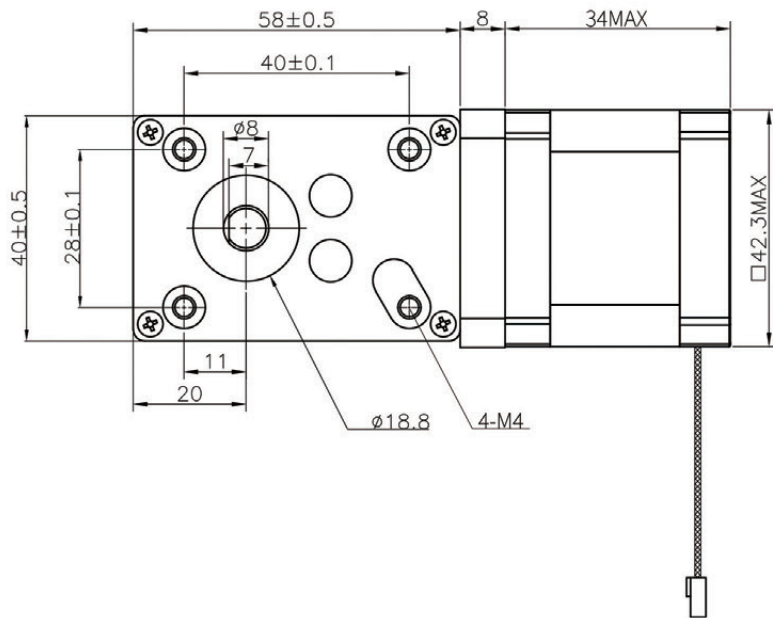
Model No.	额定电压 Rated Voltage	每相电流 Current /Phase	每相电阻 Resistance /Phase	每相电感 Inductance /Phase	保持转矩 Holding Torque	引出线数 # of Leads	转动惯量 Rotor Inertia	重量 Weight	长度 Length	适配减速比 Max. Gear Ratio
单轴 Single Shaft	V	A	Ω	mH	m.Nm		g-cm ²	kg	mm	
42HSC1409	2.93	1.33	2.2	3.5	270	4	30	0.22	34	≤1:505

减速电机性能参数(42HSC1409) Planetary Gearbox Specifications

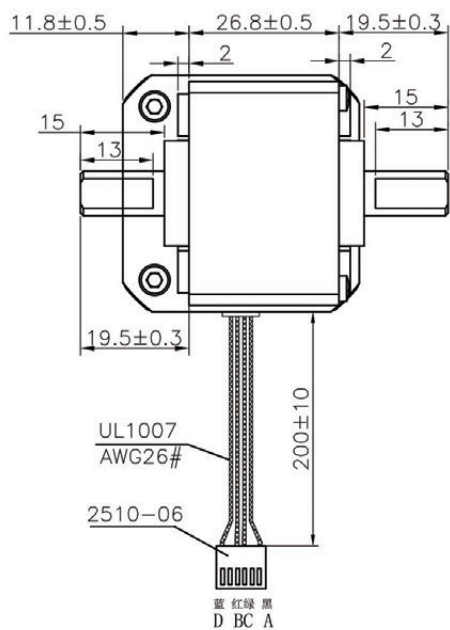
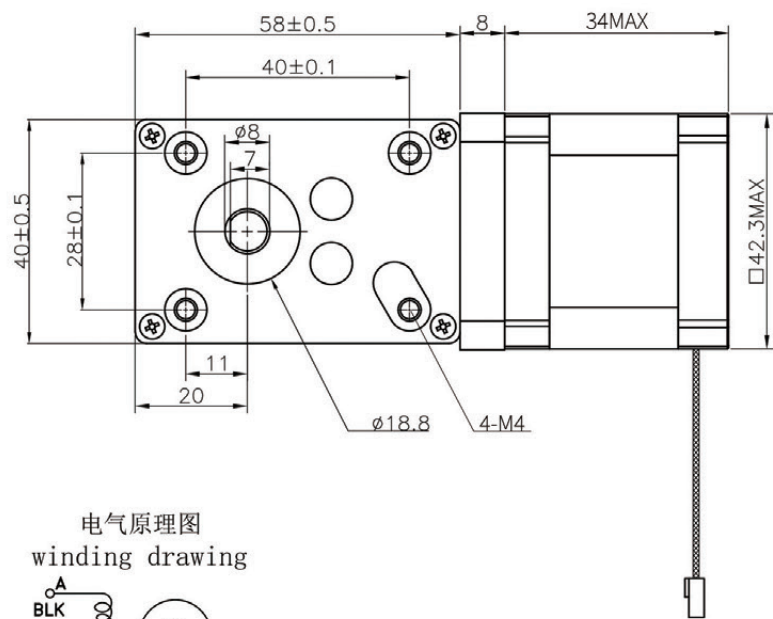
减速比 Reduction ratio	17	31	50	100	290	505
减速电机总高度 (mm)	100					
减速电机输出扭矩 Torque (mN.m)	1100	2200	3000	5000	5000	5000
减速电机总重量 weight (g)	600					
减速器长度 Length (mm)	66					
减速后速度 RPM	52.94	29.03	18.00	9.00	3.10	1.78
效率 Efficiency	81%	81%	73%	73%	66%	50%

42蜗轮蜗杆尺寸图 42mm Worm gear size chart

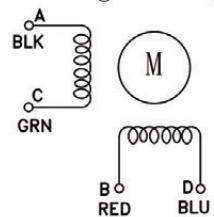
单出轴尺寸图



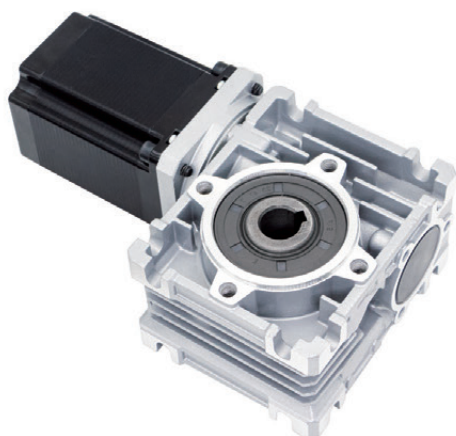
双出轴尺寸图



电气原理图
winding drawing



57蜗轮蜗杆系列电机 57mm worm gear series motor



输出转矩: 4.0N.m~23.0N.m
Load Range: 4.0N.m~23.0N.m

蜗轮蜗杆减速器参数 Worm gear reducer parameters

蜗轮蜗杆材料 Worm gear material	纯铜
最大允许径向负载 (离法兰 10mm 处) Max. Radial load (10mm from flange)	300N
最大允许轴向负载 Max. shaft axial load	200N
背隙 (无负载时) Backlash at no-load	15-18弧分

57HS 混合式步进电机性能 57HS Hybrid Stepping Motor Specifications

Model No.	额定电压 Rated Voltage	每相电流 Current /Phase	每相电阻 Resistance /Phase	每相电感 Inductance /Phase	保持转矩 Holding Torque	引出线数 # of Leads	转动惯量 Rotor Inertia	重量 Weight	长度 Length	适配减速比 Max. Gear Ratio
单轴 Single Shaft	V	A	Ω	mH	m.Nm		g-cm ²	kg	mm	
57HS5417	1.7	2.0	0.85	2.5	950	4	200	0.64	55	≤1:80
57HS7407	2.1	3.0	0.7	2.0	1900	4	230	1.1	76	≤1:80

减速电机性能参数(57HS5417) Planetary Gearbox Specifications

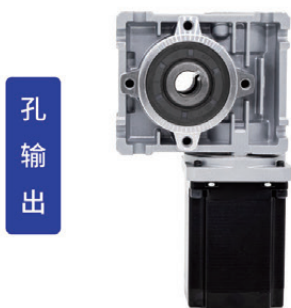
减速比 Reduction ratio	5	7.5	10	15	20	25	30	40	50	60	80
减速电机总高度 (mm)	150										
减速电机输出扭矩 (mN.m)	4085	5985	7695	10830	13680	15913	18240	20000	18000	17000	15000
减速电机总重量 (g)	1860										
减速器长度 Length (mm)	95										
减速后速度 RPM	180	120	90	60	45	36	30	22.5	18	15	11.25
效率 Efficiency	86%	84%	81%	76%	72%	67%	64%	58%	54%	50%	44%

减速电机性能参数(57HS7407) Planetary Gearbox Specifications

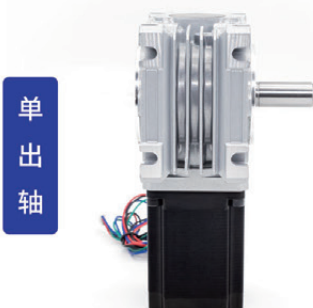
减速比 Reduction ratio	5	7.5	10	15	20	25	30	40	50	60	80
减速电机总高度 (mm)	171										
减速电机输出扭矩 (mN.m)	8170	11970	15390	20000	20000	23000	21000	20000	18000	17000	15000
减速电机总重量 (g)	2320										
减速器长度 Length (mm)	95										
减速后速度 RPM	180	120	90	60	45	36	30	22.5	18	15	11.25
效率 Efficiency	86%	84%	81%	76%	72%	67%	64%	58%	54%	50%	44%

57蜗轮蜗杆尺寸图 57mm Worm gear size chart

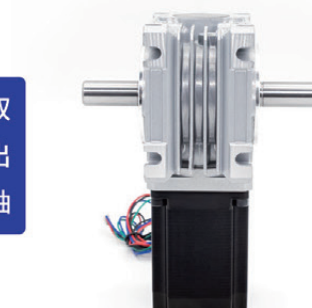
可选配单/双出轴



孔
输
出

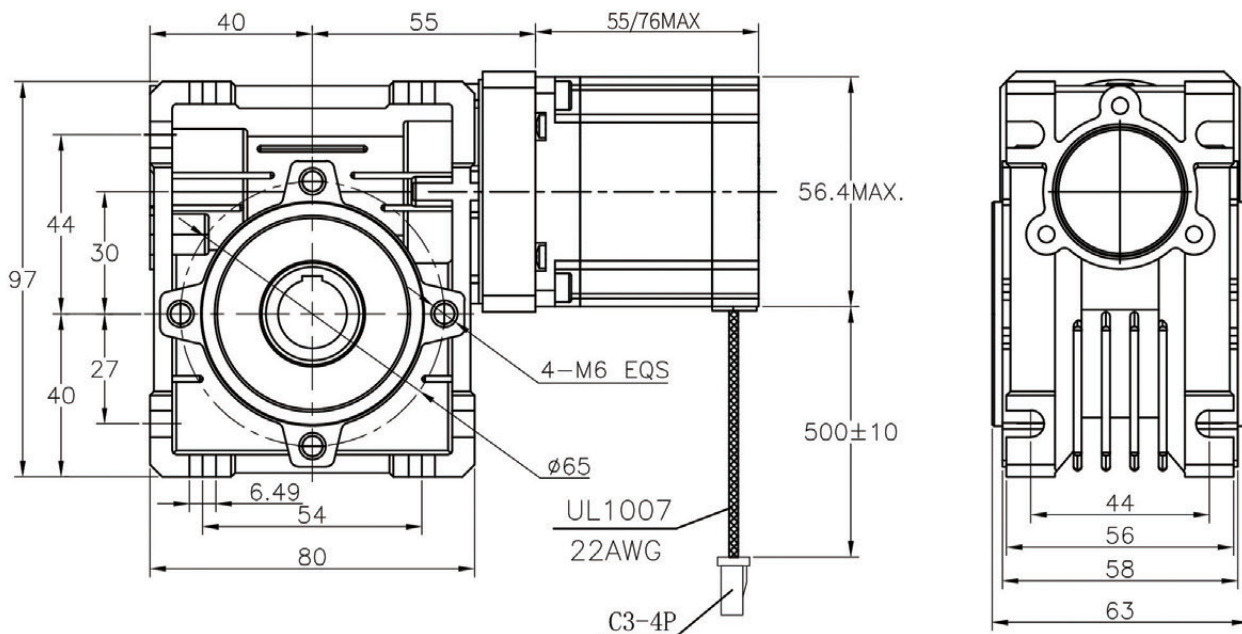


单
出
轴



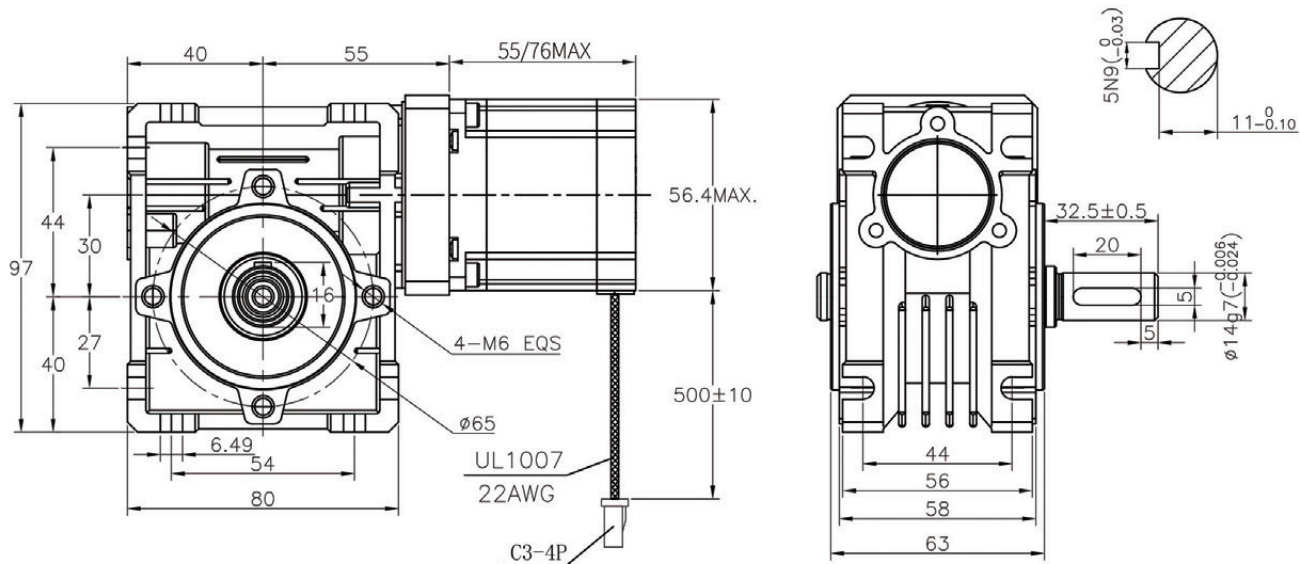
双
出
轴

孔输出尺寸图

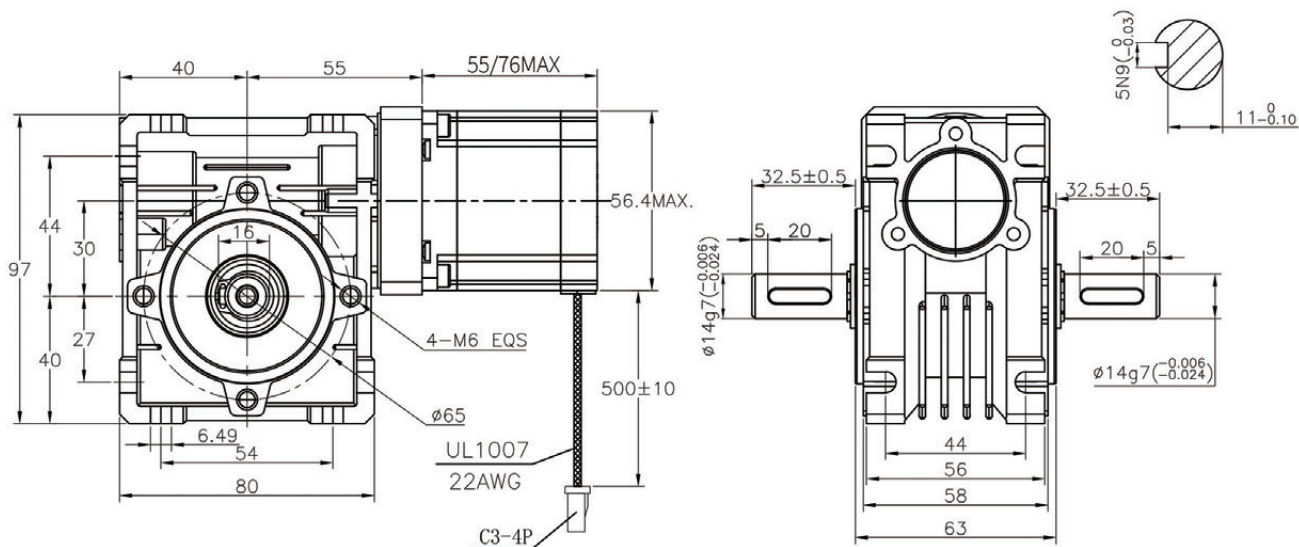


57蜗轮蜗杆尺寸图 57mm Worm gear size chart

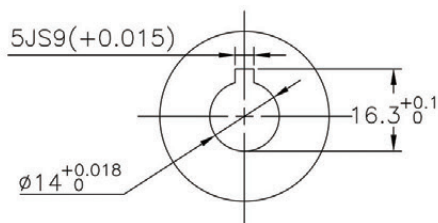
单出轴尺寸图



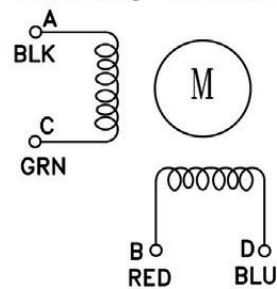
双出轴尺寸图



减速器输出轴孔尺寸



电气原理图 winding drawing



UMot 优摩特 UMOPCE®

重庆优摩特科技有限公司
CHONGQING UMOT TECHNOLOGY CO.,LTD



热线
电话 /023-86132606

邮箱: info@umottech.com | 网址: www.umotmotor.cn

公司地址: 重庆市九龙坡区火炬大道101号城市日记11-18号